

# B.F. Saul Building

925 15th Street, NW  
Washington, D.C.

## Sublease Available

### Space Profile

<b>Premises</b>	5th Floor
<b>RSF</b>	2,671 RSF
<b>Rental Rate</b>	\$25.00/SF, Full Service
<b>Availability</b>	Immediate
<b>Term</b>	October 31, 2023
<b>Building Class</b>	B
<b>Submarket</b>	East End
<b>Space Built:</b>	2016

### Features

- High Ceilings
- Full Floor
- 3 Sides of Windows
- Furniture can Convey

### For More Information



Jake C. Ruben  
202.942.1724  
jruben@cresa.com



Mindy W. Saffer  
202.783.3896  
msaffer@cresa.com

Even though obtained from sources deemed reliable, no warranty or representation, express or implied, is made as to the accuracy of the information herein, and it is subject to errors, omissions, change of price, rental or other conditions, withdrawal without notice, and to any special listing conditions imposed by our principals.



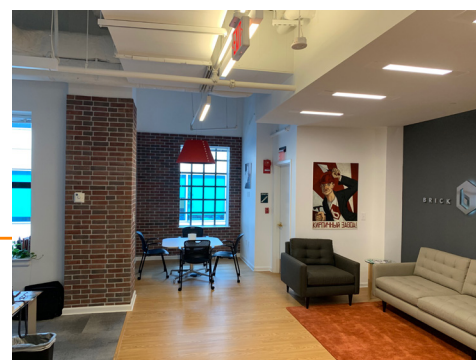
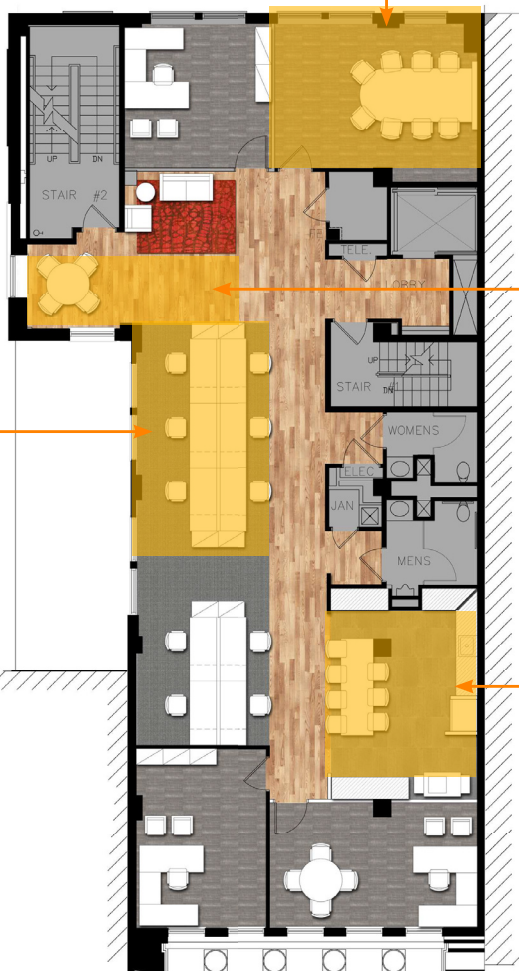
1800 M Street, NW, Suite 300 N, Washington, DC 20036



## B.F. Saul Building

925 15th Street, NW  
Washington, D.C.

5th Floor – 2,671 SF



### For More Information

Cresa  
1800 M Street, NW  
Suite 300 N  
Washington, DC 20036  
[cresa.com/washingtondc](http://cresa.com/washingtondc)



Jake C. Ruben  
202.942.1724  
[jruben@cresa.com](mailto:jruben@cresa.com)



Mindy W. Saffer  
202.783.3896  
[msaffer@cresa.com](mailto:msaffer@cresa.com)