



**702 H Street, NW
Washington, DC**

**Sublease
Available**

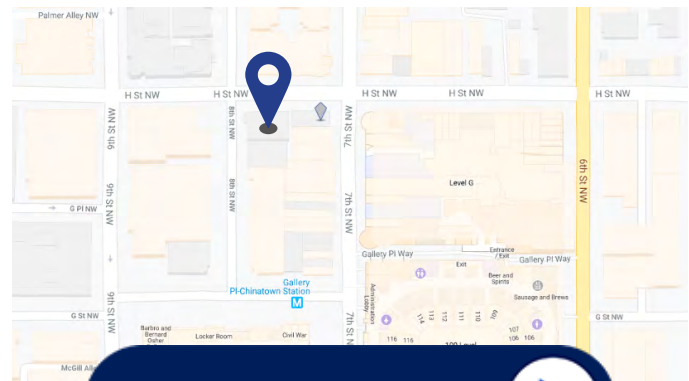
Space Profile

Premises	12,985 RSF on the 2nd floor
Rental Rate	\$39.00/SF, Full Service
Availability	Flexible
Term	Through November 30, 2024, or November 30, 2027
Submarket	East End

Features

- Large gourmet kitchen and breakout area
- Tall ceilings
- Fabulous window line
- Furniture can convey
- Directly across from Gallery Place Metro station in the heart of East End Downtown
- Walking distance to the Courthouse
- 15 minutes to Reagan National Airport
- Elevator in building
- Fully ADA compliant
- Fully renovated in September 2012
- Efficient, primarily open space plan
- Exposed brick and ceilings throughout

Map



Take a Virtual Tour

For More Information



Natalie Gosnell
240.281.9110
ngosnell@cresa.com



Sam Heiber
202.783.3889
sheiber@cresa.com

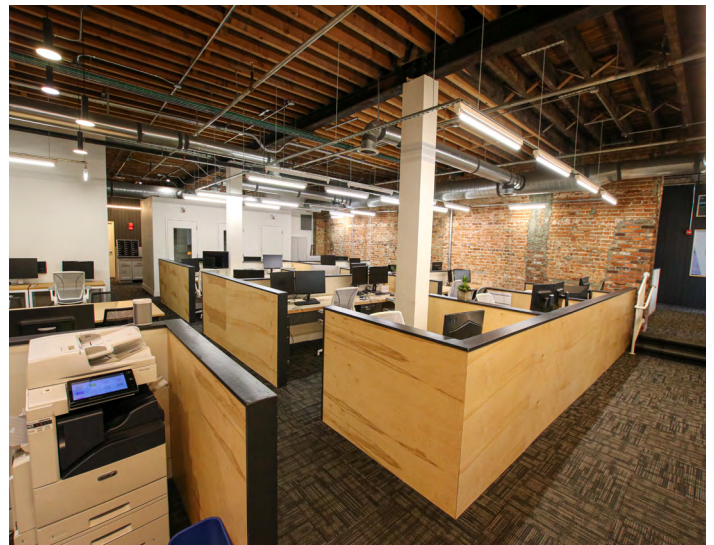
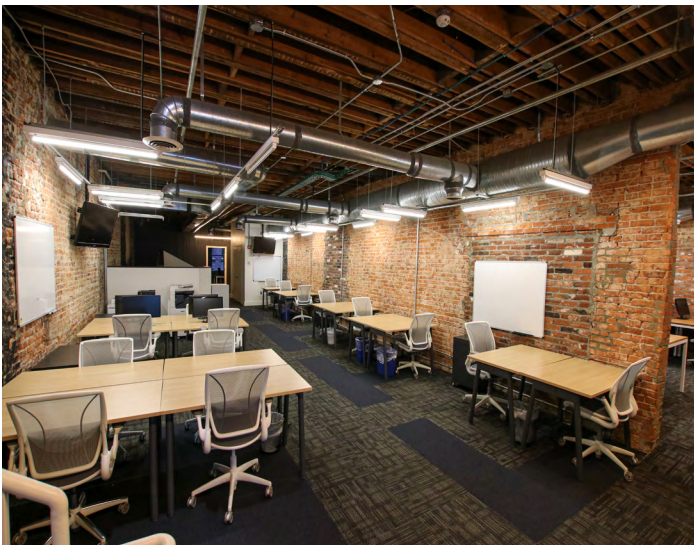
Cresa
1800 M Street, NW, Suite 300N
Washington, DC 20036
cresa.com/washingtondc

Even though obtained from sources deemed reliable, no warranty or representation, express or implied, is made as to the accuracy of the information herein, and it is subject to errors, omissions, change of price, rental or other conditions, withdrawal without notice, and to any special listing conditions imposed by our principals.

cresa



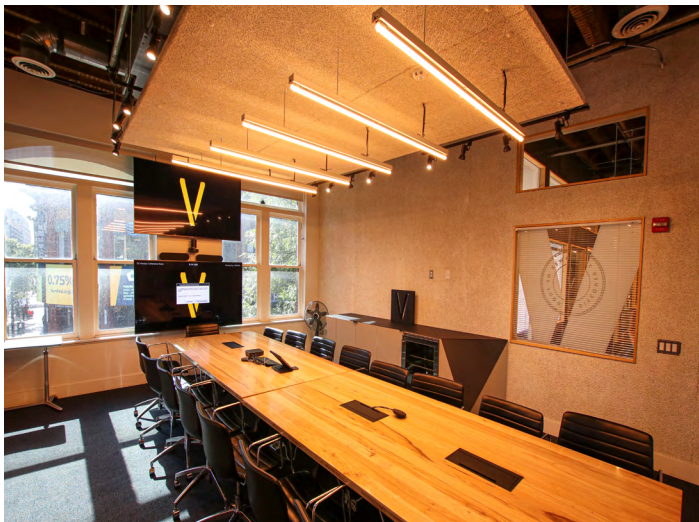
Workstations





702 H Street, NW
Washington, DC

Conference Room



Office



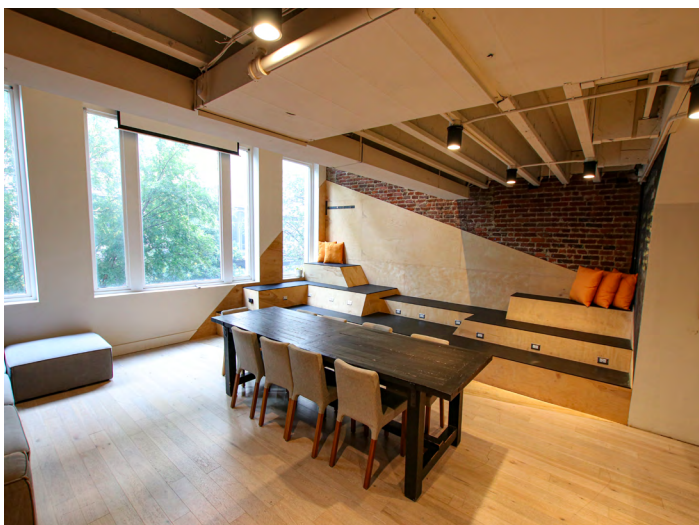
Gourmet Kitchen



Lounge



Lounge



Entrance

