

8%  
Cobroker  
Commission



Sublease Available

# 2600 Virginia Avenue, NW

## Washington, DC 20037

### Overview

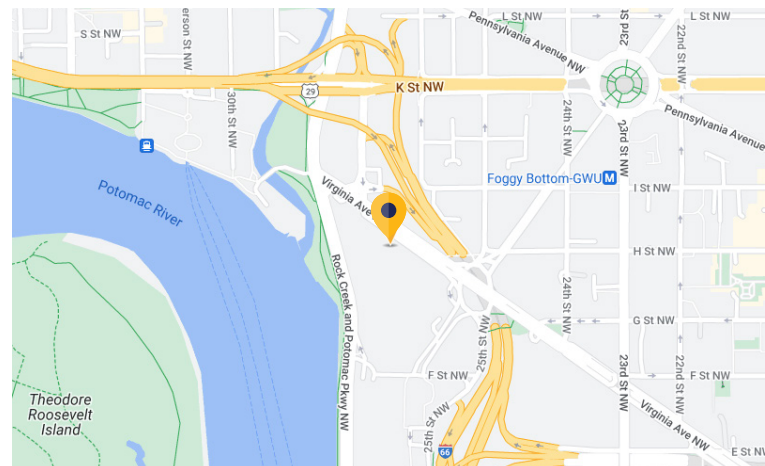
<b>Premises:</b>	5th Floor: 6,738 square feet
<b>Rental Rate:</b>	\$37.50/RSF
<b>Availability:</b>	Immediate
<b>Term:</b>	Through December 31, 2027
<b>Submarket:</b>	West End

### Features

- River views
- Fully furnished
- Cabled/wired and ready to go

### Building Amenities

- Renovated Lobby
- Direct Access to Hotel
- Private Spa-Quality Fitness Center
- Secure Tenant-Only Bike Storage
- Shared Conferencing Facilities and Spacious Tenant Lounge



### For More Information



**Sam Heiber**

301.651.1386  
sheiber@cresa.com



**Josh Freedomberg**

301.538.0939  
jfreedenberg@cresa.com



**Natalie Gosnell**

240.281.9110  
ngosnell@cresa.com

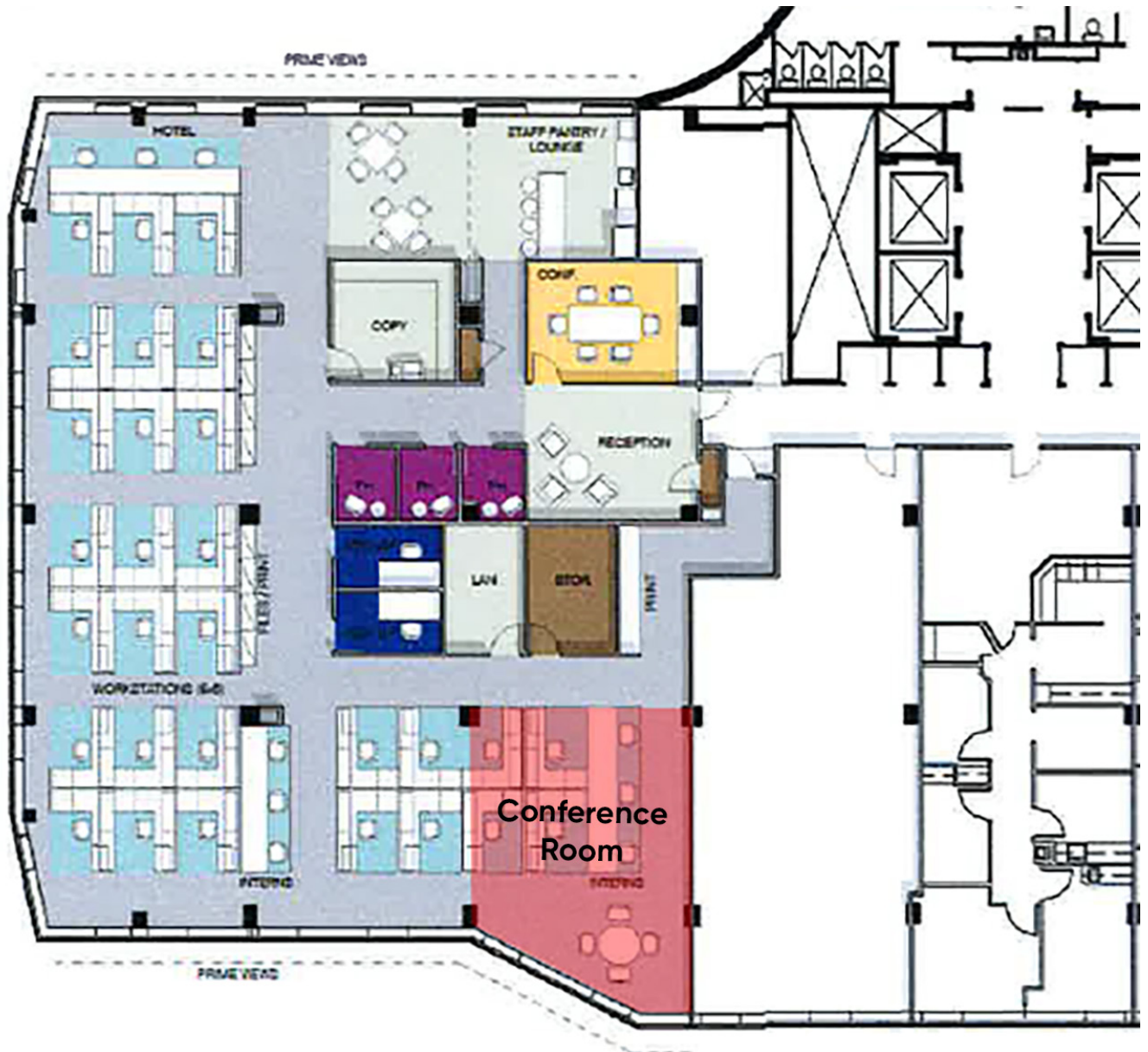
**Cresa**

1800 M Street, NW  
Suite 300N  
Washington, DC 20036  
cresa.com/washingtondc

# 2600 Virginia Avenue, NW

Washington, DC 20037

## Floor Plan



**Sam Heiber**  
301.651.1386  
sheiber@cresa.com



**Josh Freedenberg**  
301.538.0939  
jfreedenberg@cresa.com



**Natalie Gosnell**  
240.281.9110  
ngosnell@cresa.com

**Cresa**  
1800 M Street NW, Suite 300N  
Washington, DC 20036

Sublease Available




# 2600 Virginia Avenue, NW

Washington, DC 20037

## Interior Photos



 **Sam Heiber**  
301.651.1386  
sheiber@cresa.com

 **Josh Freedenberg**  
301.538.0939  
jfreedenberg@cresa.com

 **Natalie Gosnell**  
240.281.9110  
ngosnell@cresa.com

**Cresa**  
1800 M Street NW, Suite 300N  
Washington, DC 20036