

**1800 Massachusetts Avenue, NW
Washington, DC 20036**

**Sublease
Available**

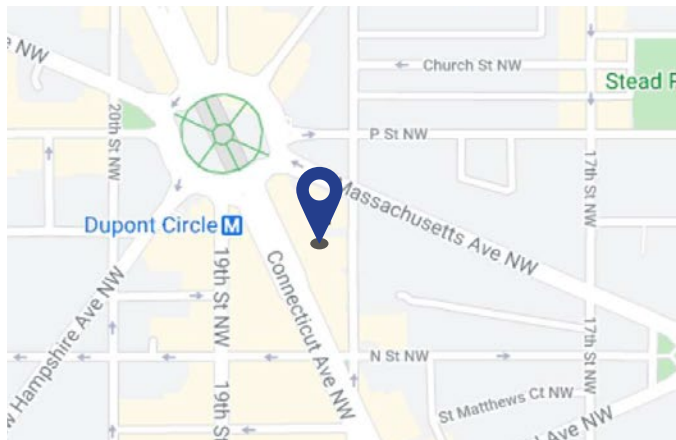
Space Profile

Premises	4th Floor
RSF	100-4,000 RSF
Rental Rate	\$950/month per workstation
Availability	Immediate
Term	Negotiable through May 30, 2026

Take a Virtual Tour



Map



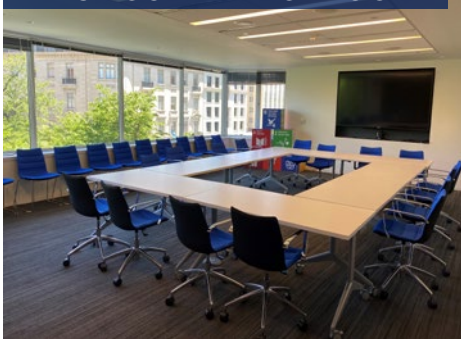
Features

- Furniture available
- Conferencing Facility, Fitness Center, and Rooftop Terrace
- 1 block from Dupont Circle Metro
- Free Access to Simpli – a concierge service provider that enhances the workplace experience through on-site and virtual platforms that blends wellness, experience management, and technology to increase tenant well-being.

Space Description

PartnersGlobal has space available in a sunlit, open and collaborative environment with all the amenities and right-sized meeting spaces for most small to medium sized business or nonprofit organizations. The building is steps away from the Dupont Circle Metro stop and all the surrounding conveniences.

LARGE CONFERENCE ROOM



KITCHEN SEATING



WORK STATION I



For More Information

Cresa
1800 M Street, NW
Suite 300N
Washington, DC 20036
cresa.com/washingtondc



Jonathan E. Harms
202.783.3892
jharms@cresa.com



Joshua E. Freedenberg
202.783.3891
jfreenberg@cresa.com



Natalie A. Gosnell
301.841.6546
ngosnell@cresa.com

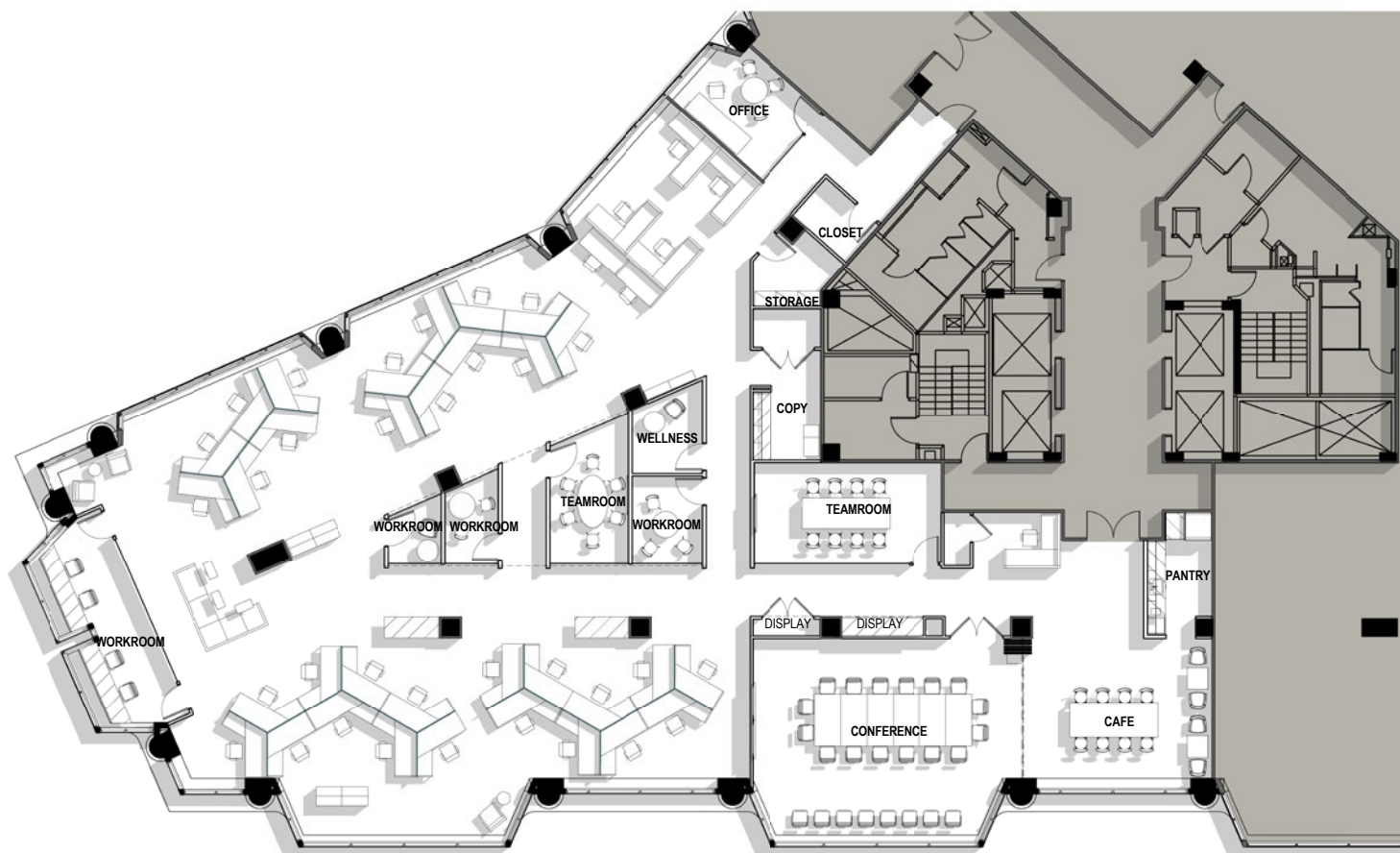
Even though obtained from sources deemed reliable, no warranty or representation, express or implied, is made as to the accuracy of the information herein, and it is subject to errors, omissions, change of price, rental or other conditions, withdrawal without notice, and to any special listing conditions imposed by our principals.





1800 Massachusetts Avenue, NW
Washington, DC

4th Floor: 100-4,000 SF



1800 Massachusetts Ave, NW #401

For More Information

Cresa
1800 M Street, NW
Suite 300N
Washington, DC 20036
cresa.com/washingtondc



Jonathan E. Harms
202.783.3892
jharms@cresa.com



Joshua E. Freedenberg
202.783.3891
jfreedenberg@cresa.com



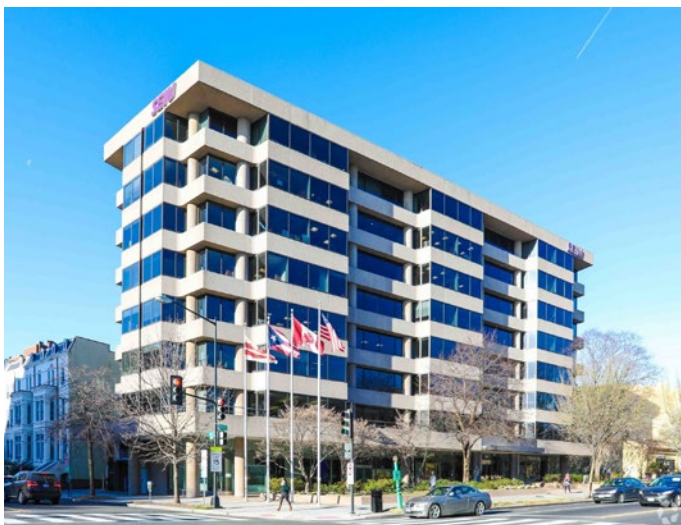
Natalie A. Gosnell
301.841.6546
ngosnell@cresa.com



1800 Massachusetts Avenue, NW
Washington, DC

4th Floor: 100-4,000 SF

BUILDING EXTERIOR



LARGE CONFERENCE ROOM



SMALL CONFERENCE ROOM



For More Information

Cresa
1800 M Street, NW
Suite 300N
Washington, DC 20036
cresa.com/washingtondc



Jonathan E. Harms
202.783.3892
jharms@cresa.com



Joshua E. Freedenberg
202.783.3891
jfreedenberg@cresa.com



Natalie A. Gosnell
301.841.6546
ngosnell@cresa.com



1800 Massachusetts Avenue, NW
Washington, DC

4th Floor: 100-4,000 SF

MEETING ROOM



WORK STATION II



PANTRY



For More Information

Cresa
1800 M Street, NW
Suite 300N
Washington, DC 20036
cresa.com/washingtondc



Jonathan E. Harms
202.783.3892
jharms@cresa.com



Joshua E. Freedenberg
202.783.3891
jfreedenberg@cresa.com



Natalie A. Gosnell
301.841.6546
ngosnell@cresa.com