

1575 Eye Street, NW
Washington, DC 20005

**Sublease
Available**

Plug 'n' Play

Space Profile

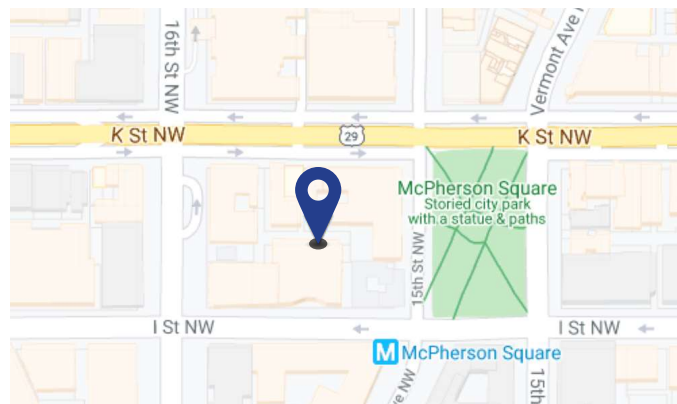
| | |
|-----------------------|--|
| Premises | 3rd floor |
| RSF | 6,736 RSF |
| Rental Rate | \$42.50/SF, Full Service Gross |
| Availability | Immediate |
| Term | Through March 30, 2029 (a shorter term may be considered) |
| Building Class | A |
| Submarket | Central Business District |
| Parking | Available in Building |

Features

- Directly off the elevators
- Brand new build out
- Fully furnished space
- All street views
- Fitness center

[Click Here](#) for Virtual Tour 3rd Floor

Map



For More Information



Peter Gottesman
202.256.5343
pgottesman@cresa.com



Kenneth King
202.942.1722
kking@cresa.com

Even though obtained from sources deemed reliable, no warranty or representation, express or implied, is made as to the accuracy of the information herein, and it is subject to errors, omissions, change of price, rental or other conditions, withdrawal without notice, and to any special listing conditions imposed by our principals.

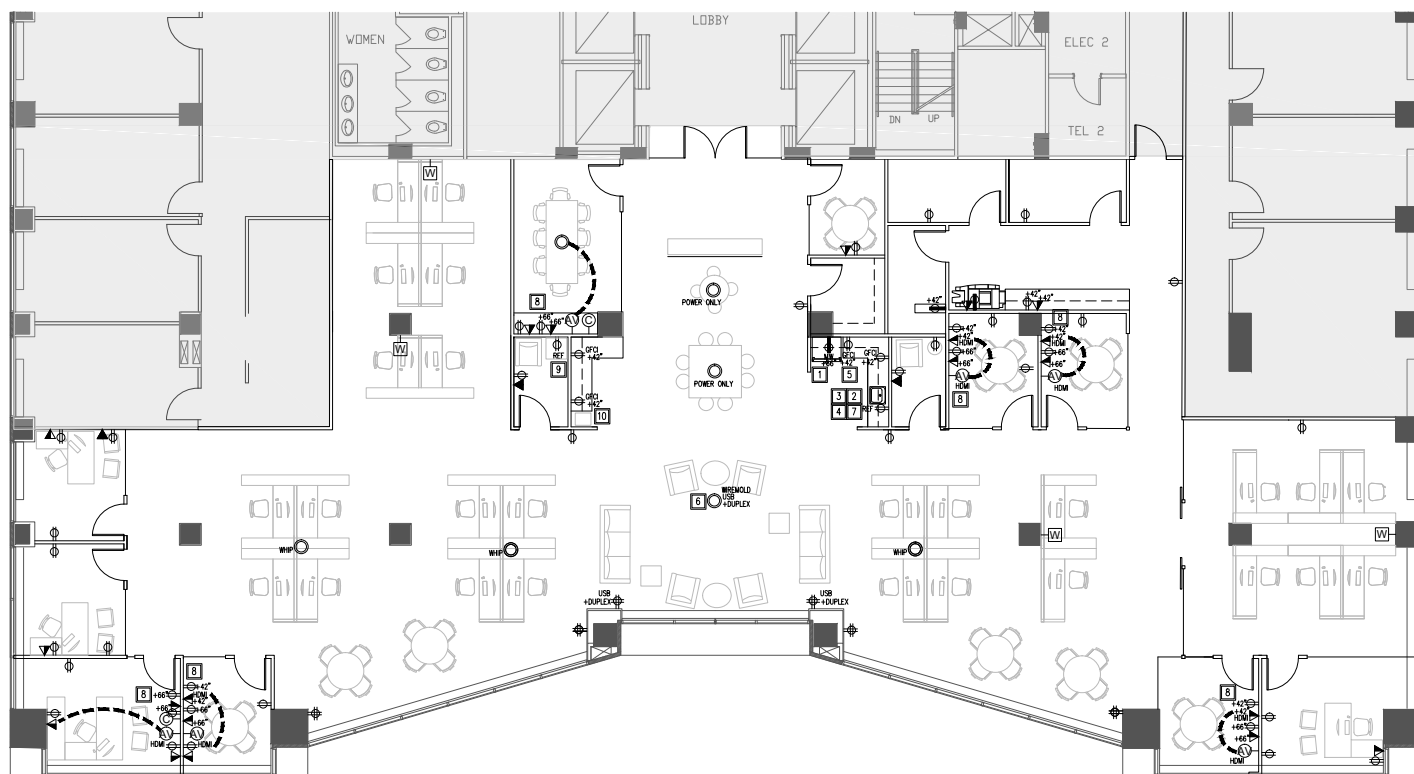


1800 M Street, NW, Suite 300N, Washington, DC 20036



1575 Eye Street, NW
Washington, DC
20005

3rd Floor - 6,736 SF



For More Information

Cresa
1800 M Street, NW
Suite 300N
Washington, DC 20036
cresa.com/washingtondc



Peter Gottesman
202.256.5343
pgottesman@cresa.com



Kenneth King
202.942.1722
kking@cresa.com