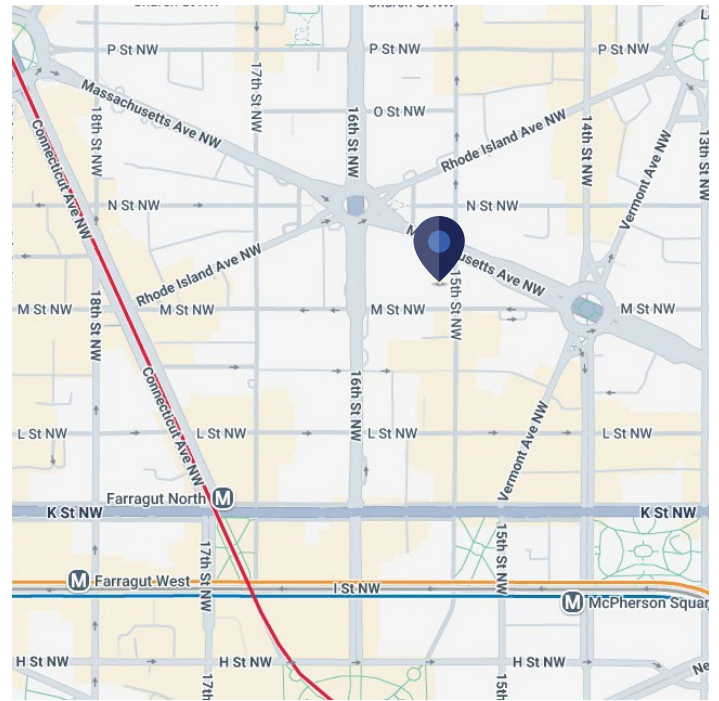
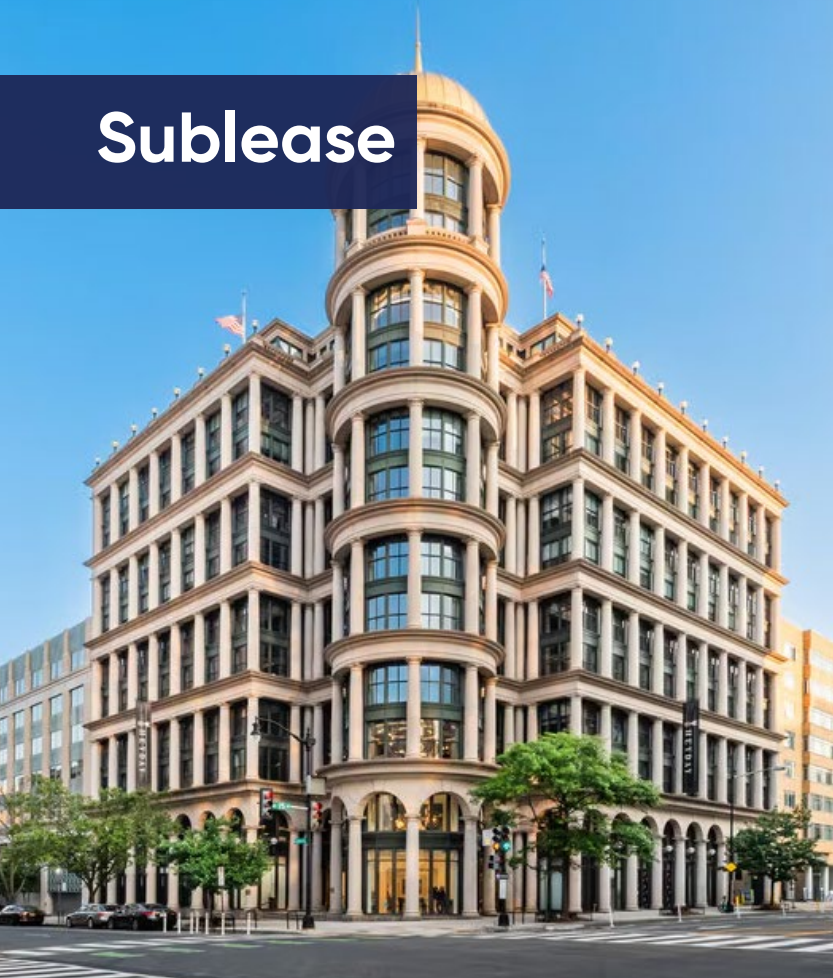


Sublease



1501 M Street, NW

Washington, DC 20005
East End

Features:

Unique Opportunity to combine with other 6,166 SF for a Full Floor user with Private Terrace along both M Street & 15th Street

- Top Floor
- Private Terrace
- Incredible DC Views (National Cathedral)
- Building amenities include: Fitness Center, Conference Center, Tenant Lounge

Space Profile:

Premises	9,130 SF on the 11th Floor
Rental Rate	\$58.00 per square foot
Availability	60 Days
Term	4 Years (through Oct 2029); Longer term available through Landlord
Built / Renovated	1991 / 2020
Parking	0.82/1,000 SF

Take a Virtual Tour



Contact:



Tom McBride
202.942.1727
tmcbride@cresa.com

Cresa | 1800 M Street, NW, Suite 300N
Washington, DC 20036

PRIVATE TERRACE

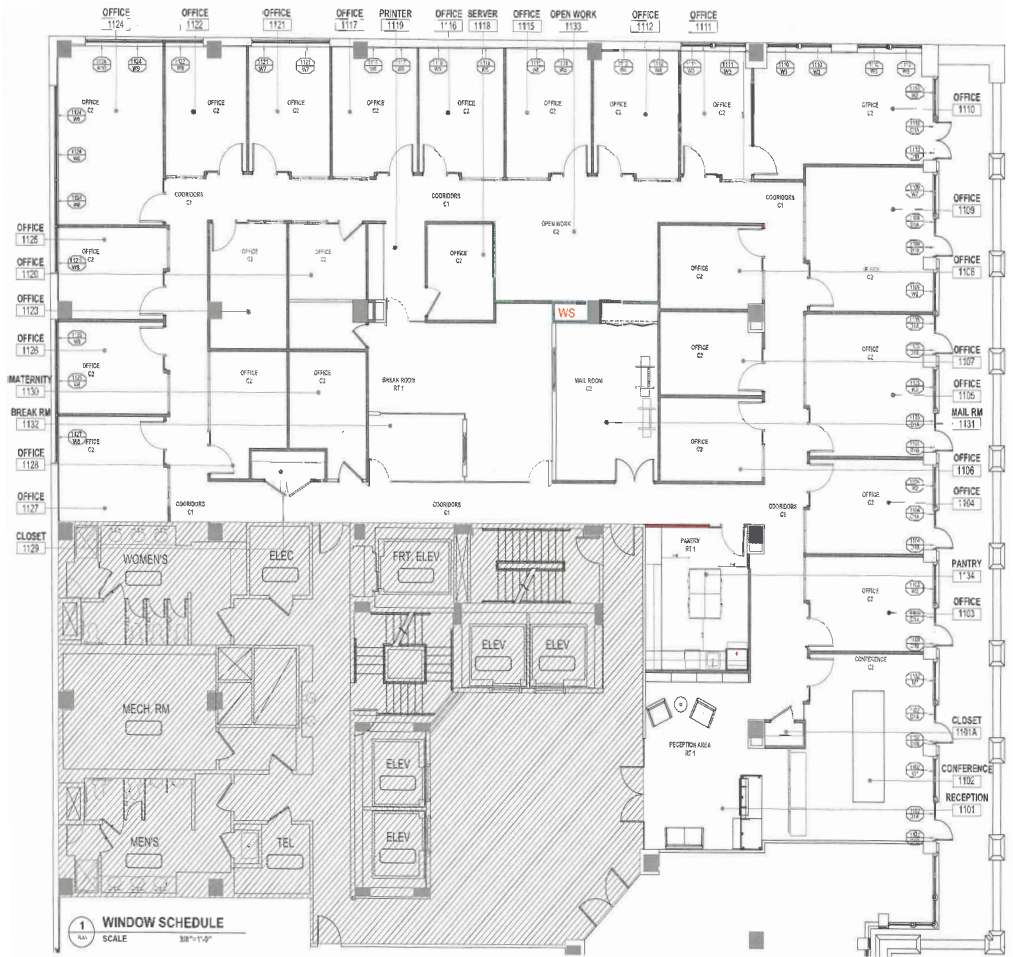


1501 M Street, NW Washington, DC 20005

11th Floor - 9,130 SF

Space Plan:

- 2 incredible, executive level Partner corner offices (4 Partner / Executive offices in total)
- 13 additional windowed offices, 2 interior offices, 6 workstations
- Large conference room and small conference room
- Eat-in pantry



FITNESS CENTER



Tom McBride
202.942.1727
tmcbride@cresa.com

Cresa | 1800 M Street, NW, Suite 300N, Washington, DC 20036

RECEPTION AREA



LARGE CONFERENCE ROOM



EXECUTIVE OFFICE



1501 M Street, NW
Washington, DC 20005

STANDARD OFFICE



EXECUTIVE CORNER OFFICE



EAT-IN KITCHENETTE & LIBRARY



WORKSTATIONS



cresa



Tom McBride
202.942.1727
tmcbride@cresa.com

Cresa | 1800 M Street, NW, Suite 300N, Washington, DC 20036