



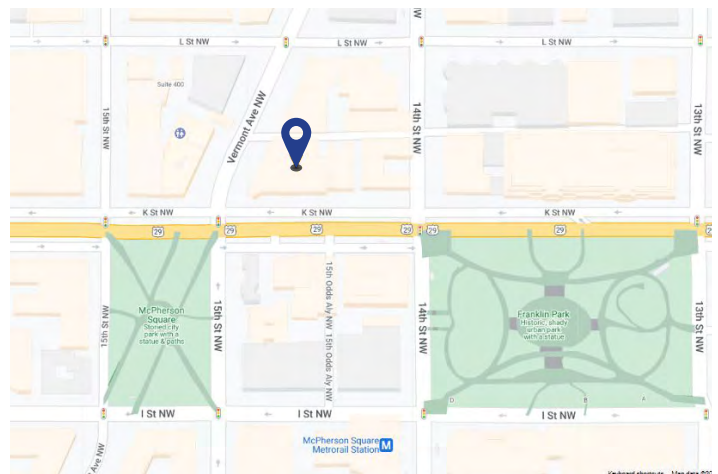
**1425 K Street, NW  
Washington, DC 20005**

**Sublease  
Available**

**Space Profile**

<b>Premises</b>	18,865 RSF on the 3rd Floor
<b>Rental Rate</b>	\$38.00/SF, Full Service
<b>Availability</b>	Immediate
<b>Term</b>	Through March 31, 2027
<b>Building Class</b>	A
<b>Submarket</b>	McPherson Square
<b>Built/Renovated</b>	1970/2001
<b>Parking</b>	Up to 15 spaces

**Map**



**Features & Amenities**

- Highly improved beautiful space
- Private offices and workstations
- Well-funded sublandlord
- Large conference centers
- Building Features:
  - Fitness center with shower facilities
  - Secured bike room
  - Green rooftop terrace

**For More Information**

**Cresa**  
1800 M Street, NW  
Suite 300N  
Washington, DC 20036



**Matt Ward**  
301.785.4305  
mward@cresa.com



**Mindy Saffer**  
202.783.3896  
msaffer@cresa.com

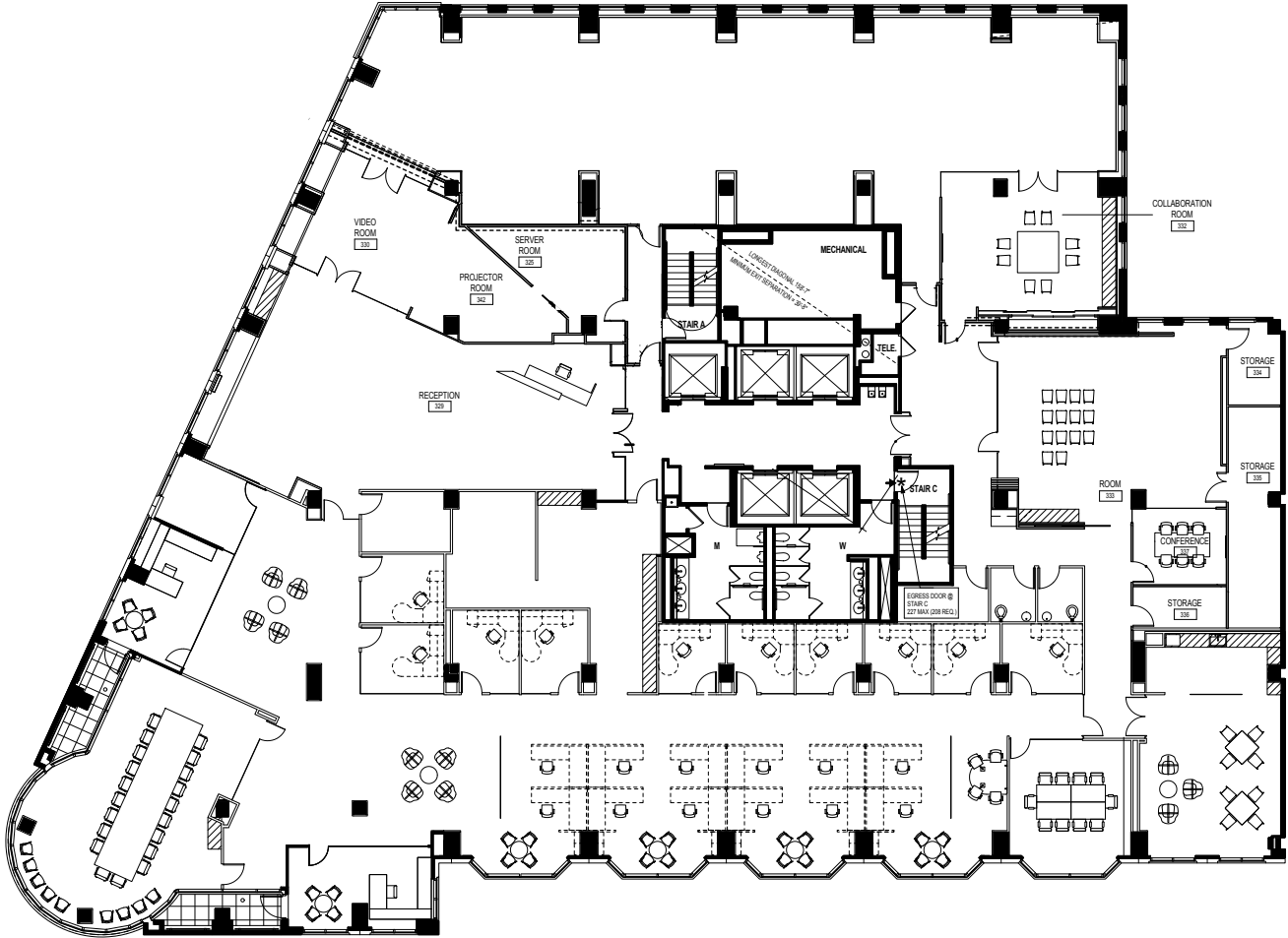
Even though obtained from sources deemed reliable, no warranty or representation, express or implied, is made as to the accuracy of the information herein, and it is subject to errors, omissions, change of price, rental or other conditions, withdrawal without notice, and to any special listing conditions imposed by our principals.





1425 K Street, NW  
Washington, DC 20005

3rd Floor - 18,865 SF



### For More Information

**Cresa**  
1800 M Street, NW  
Suite 300N  
Washington, DC 20036



**Matt Ward**  
301.785.4305  
mward@cresa.com



**Mindy Saffer**  
202.783.3896  
msaffer@cresa.com