

# Tower Building 1401 K Street, NW Washington, DC 20005

## Sublease Available

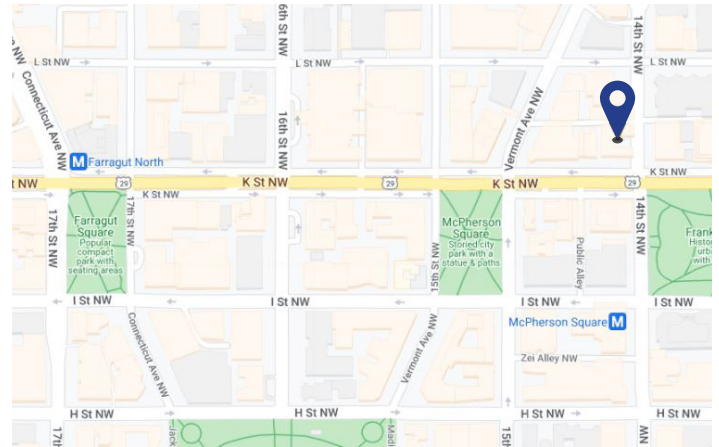
### Space Profile

<b>Premises</b>	3,657 RSF on the 11th floor
<b>Rental Rate</b>	\$46.00/SF, Full Service
<b>Availability</b>	Immediate
<b>Term</b>	Flexible through September 2026

### Features

- Entire suite available
- Furniture conveys
- Park views from suite with great natural light
- Building Fitness Center, Conferencing Facility & Tenant Lounge

### Map



### For More Information



Sam Heiber  
202.783.3889  
sheiber@cresa.com



Natalie Gosnell  
240.281.9110  
ngosnell@cresa.com

Even though obtained from sources deemed reliable, no warranty or representation, express or implied, is made as to the accuracy of the information herein, and it is subject to errors, omissions, change of price, rental or other conditions, withdrawal without notice, and to any special listing conditions imposed by our principals.

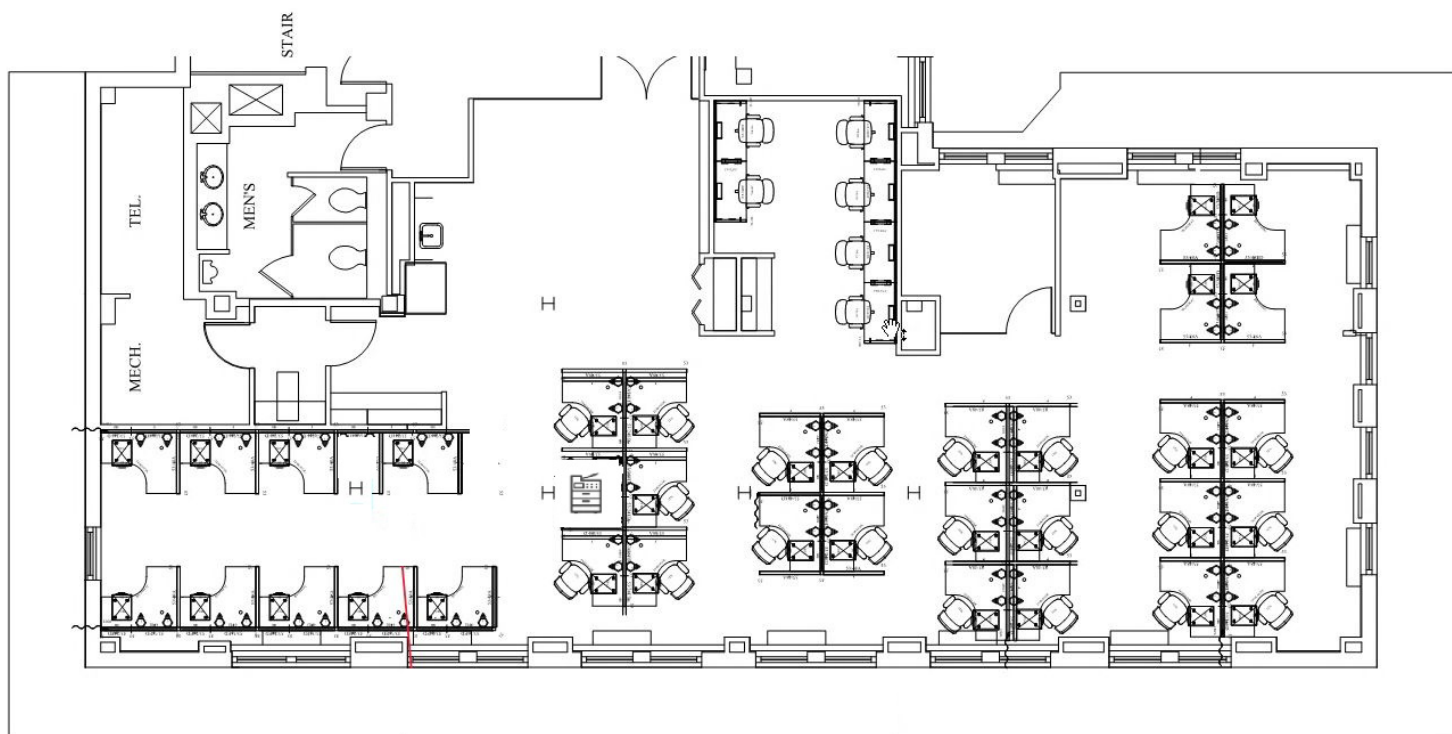


1800 M Street, NW, Suite 300N, Washington, DC 20036



**Tower Building  
1401 K Street, NW  
Washington, DC 20005**

**11th Floor - 3,657 SF**



## For More Information

Cresa  
1800 M Street, NW  
Suite 300N  
Washington, DC 20036



**Sam Heiber**  
202.783.3889  
sheiber@cresa.com



**Natalie Gosnell**  
240.281.9110  
ngosnell@cresa.com