



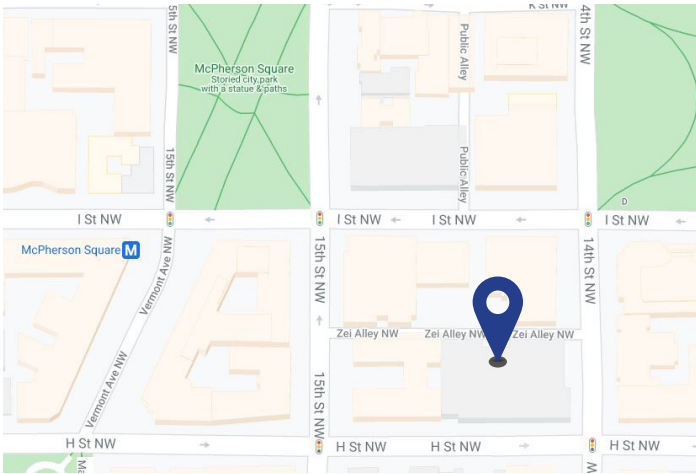
City Center
1401 H Street, NW
Washington, DC

Sublease
Available

Space Profile

- Premises** 10th Floor
- RSF** 500-4,785 RSF (individual offices available)
- Rental Rate** \$44.00/SF, Full Service
Windowed offices at \$1,400/office
- Term** Through Dec 31, 2023

Map



Amenities/Features

- Conference Center
- Roof Deck
- Fitness Center
- 2-minute walk to McPherson Square Metro

For More Information

Cresa
1800 M Street, NW
Suite 300N
Washington, DC 20036
cresa.com/washingtondc



LaMean B. Koroma
202.942.1733
lkoroma@cresa.com



Jonathan E. Harms
202.302.4031
jharms@cresa.com



Mindy W. Saffer
202.783.3896
msaffer@cresa.com

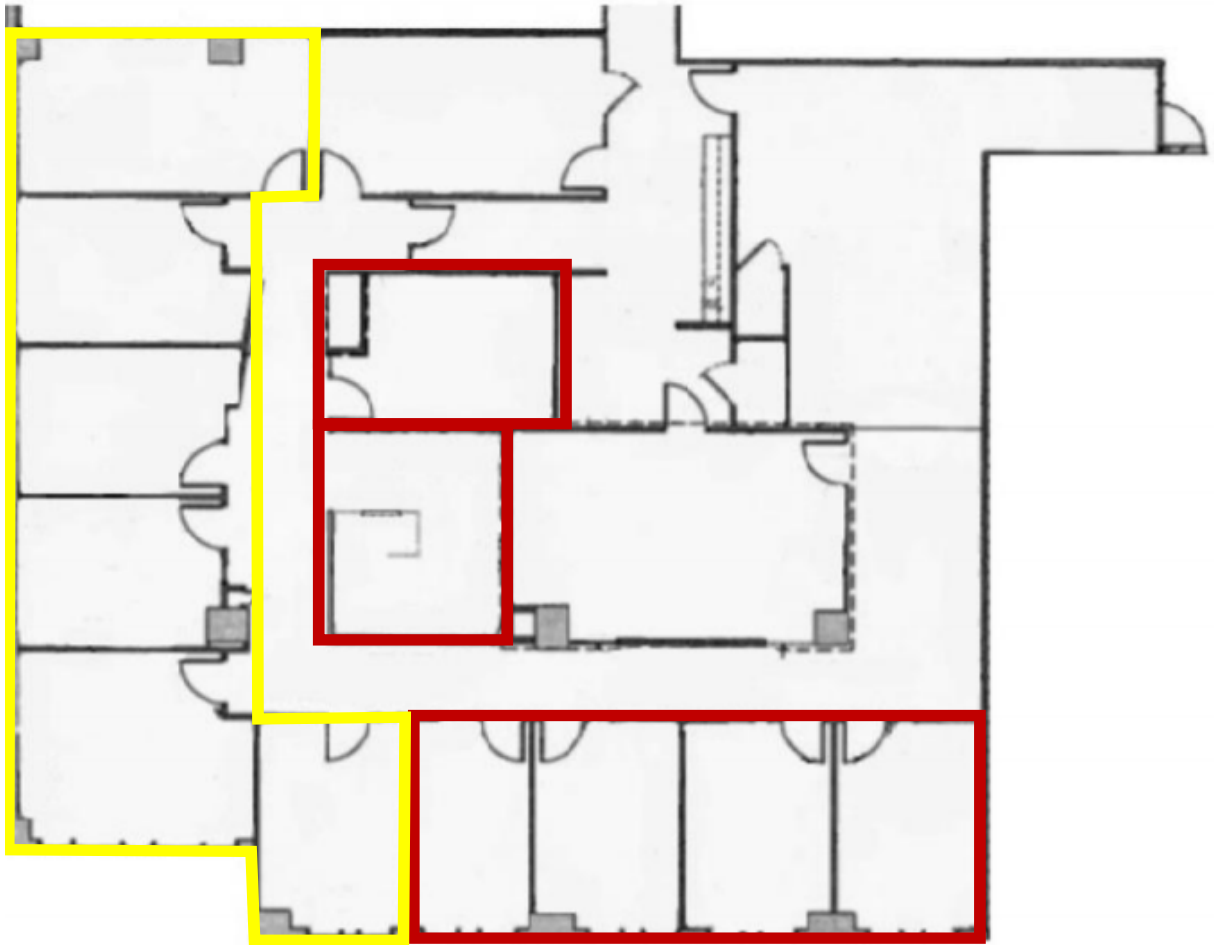
Even though obtained from sources deemed reliable, no warranty or representation, express or implied, is made as to the accuracy of the information herein, and it is subject to errors, omissions, change of price, rental or other conditions, withdrawal without notice, and to any special listing conditions imposed by our principals.





City Center
1401 H Street, NW
Washington, DC

10th Floor: 500-4,785 SF



Occupied Portion



Unoccupied Portion

For More Information

Cresa
1800 M Street, NW
Suite 300N
Washington, DC 20036
cresa.com/washingtondc



LaMean B. Koroma
202.942.1733
lkoroma@cresa.com



Jonathan E. Harms
202.302.4031
jharms@cresa.com



Mindy W. Saffer
202.783.3896
msaffer@cresa.com