



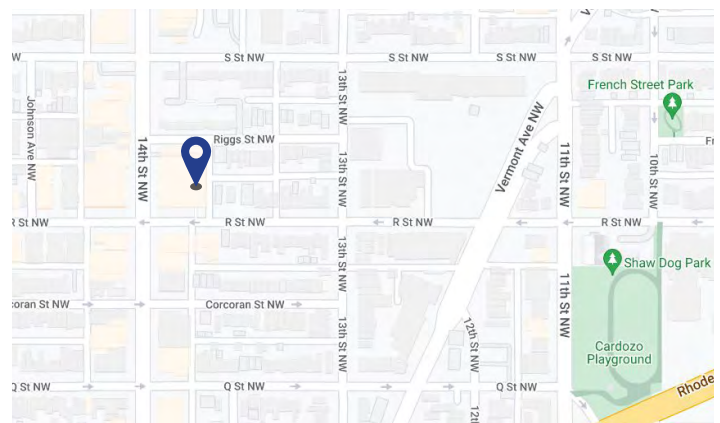
LIZ
1377 R Street, NW
Washington, DC 20009

Sublease
Available

Space Profile

Premises	Up to 18,000 RSF on the 2nd Floor
Rental Rate	Negotiable
Availability	Immediate (30 days)
Term	Through February 28, 2034
Submarket	Logan Circle
Built	2019

Map



Building Features & Amenities

- Surrounded by top national retailers, i.e. Madewell and Sephora, and award-winning restaurants
- Close to Trader Joe's, Whole Foods and Amazon Fresh
- Easy walk to Studio Theater and Constellation Theater
- Metro accessible
- Bike storage
- Showers

For More Information

Cresa
 2 Bethesda Metro Center
 Suite 900
 Bethesda, MD 20814



Matt Ward
 301.785.4305
 mward@cresa.com



Jeff Baker
 610.888.5379
 jlbaker@cresa.com

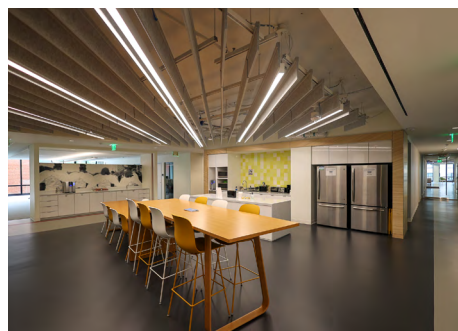
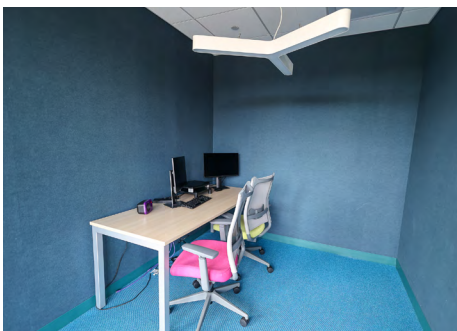
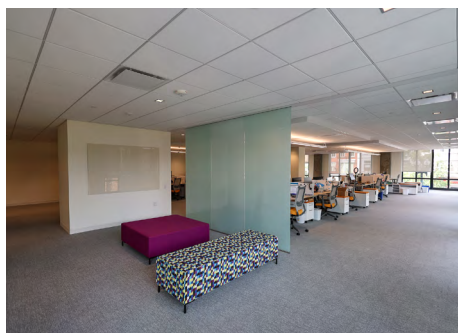
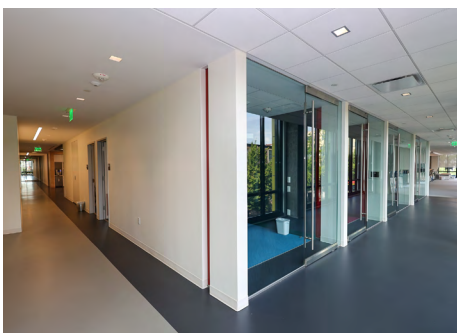
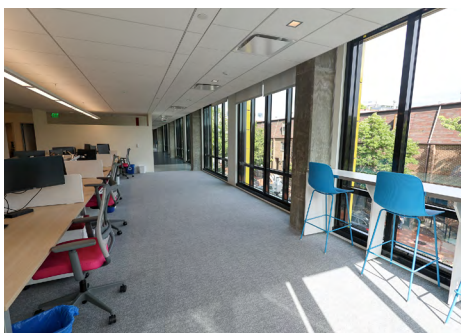
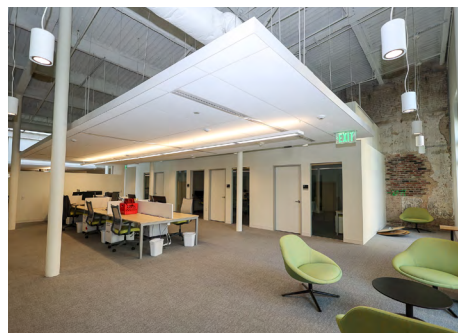
Even though obtained from sources deemed reliable, no warranty or representation, express or implied, is made as to the accuracy of the information herein, and it is subject to errors, omissions, change of price, rental or other conditions, withdrawal without notice, and to any special listing conditions imposed by our principals.





LIZ
1377 R Street, NW
Washington, DC 20009

2nd Floor: Up to 18,000 SF



For More Information

Cresa
2 Bethesda Metro Center
Suite 900
Bethesda, MD 20814



Matt Ward
301.785.4305
mward@cresa.com



Jeff Baker
610.888.5379
jbaker@cresa.com