



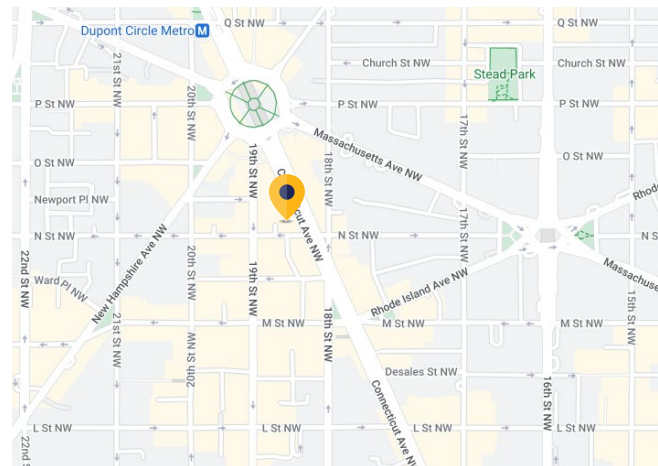
**BEAUTIFUL Brand-New Sublease Available**

# 1300 Connecticut Avenue, NW

## Washington, DC 20036

### Overview

<b>Premises:</b>	12,899 SF, 8th Floor
<b>Rental Rate:</b>	\$49.00/SF, Full Service
<b>Availability:</b>	Immediate
<b>Term:</b>	Through 1/31/2034 or 1/31/2037
<b>Submarket:</b>	CBD
<b>Building Class</b>	A
<b>Parking</b>	Available in building



### Space Features

- Space is fully furnished & cabled/wired
- Natural light throughout

### Building Features & Amenities

- Building conference facility & lounge with rooftop access
- Fitness Center
- One block from Dupont Circle Metro

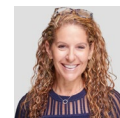
### For more information:



**Dan Silverman**  
301.802.5397  
dsilverman@cresa.com



**Jake Ruben**  
301.787.0879  
jruben@cresa.com



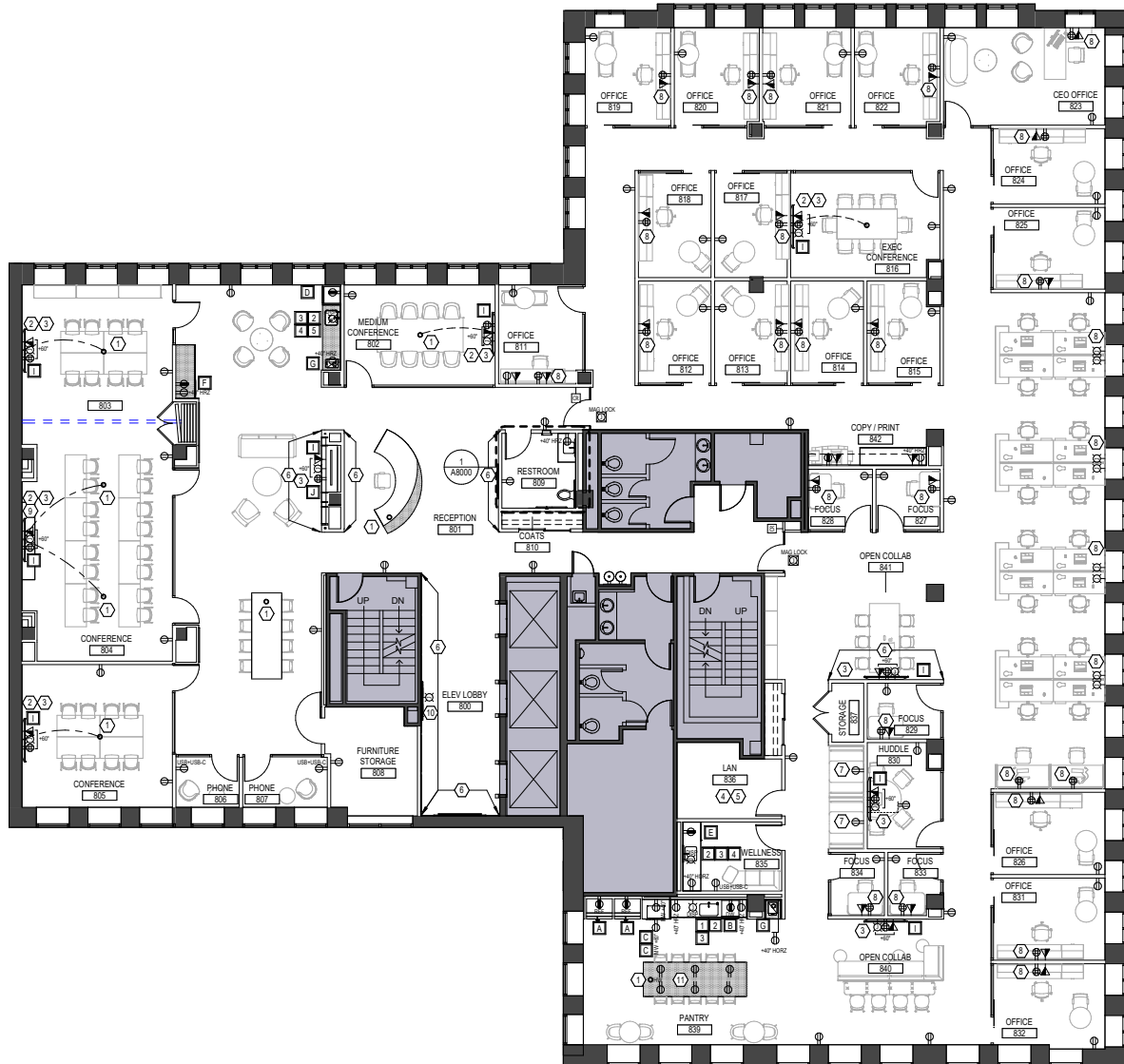
**Mindy Saffer**  
202.783.3896  
msaffer@cresa.com

Sublease Available

# 1300 Connecticut Avenue, NW

Washington, DC 20036

8th Floor: 12,899 SF



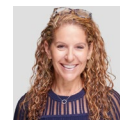
**For more information:**



**Dan Silverman**  
301.802.5397  
dsilverman@cresa.com



**Jake Ruben**  
301.787.0879  
jruben@cresa.com



**Mindy Saffer**  
202.783.3896  
msaffer@cresa.com

Sublease Available

# 1300 Connecticut Avenue, NW

Washington, DC 20036

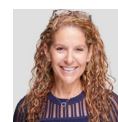
8th Floor: 12,899 SF



**Dan Silverman**  
301.802.5397  
dsilverman@cresa.com



**Jake Ruben**  
301.787.0879  
jruben@cresa.com



**Mindy Saffer**  
202.783.3896  
msaffer@cresa.com