



## 1201 New York Avenue, NW Washington, DC

## Class A Spec Suite Sublease Available

### Space Profile

<b>Premises</b>	Partial 8th Floor; elevator exposure; Separately demised
<b>RSF</b>	7,057 RSF
<b>Rental Rate</b>	\$45.00-\$57.00/SF, Full Service
<b>Availability</b>	Immediate
<b>Term</b>	Flexible through October 31, 2031
<b>Building Class</b>	A
<b>Submarket</b>	East End

### Features

- COVID friendly design - 21 private offices
- Fully furnished
- Abundant window line
- New floor to ceiling glass windows
- LEED Certified – Gold
- Property Manager on Site
- Fitness Center
- Conferencing Facility
- Rooftop

**Take a Virtual Tour**



### For More Information

Cresa  
1800 M Street, NW  
Suite 300N  
Washington, DC 20036  
[cresa.com/washingtondc](https://cresa.com/washingtondc)



Jeremy D. Melmed  
301.741.0806  
[jmelmed@cresa.com](mailto:jmelmed@cresa.com)



Mindy W. Saffer, LEED AP  
202.783.3896  
[msaffer@cresa.com](mailto:msaffer@cresa.com)

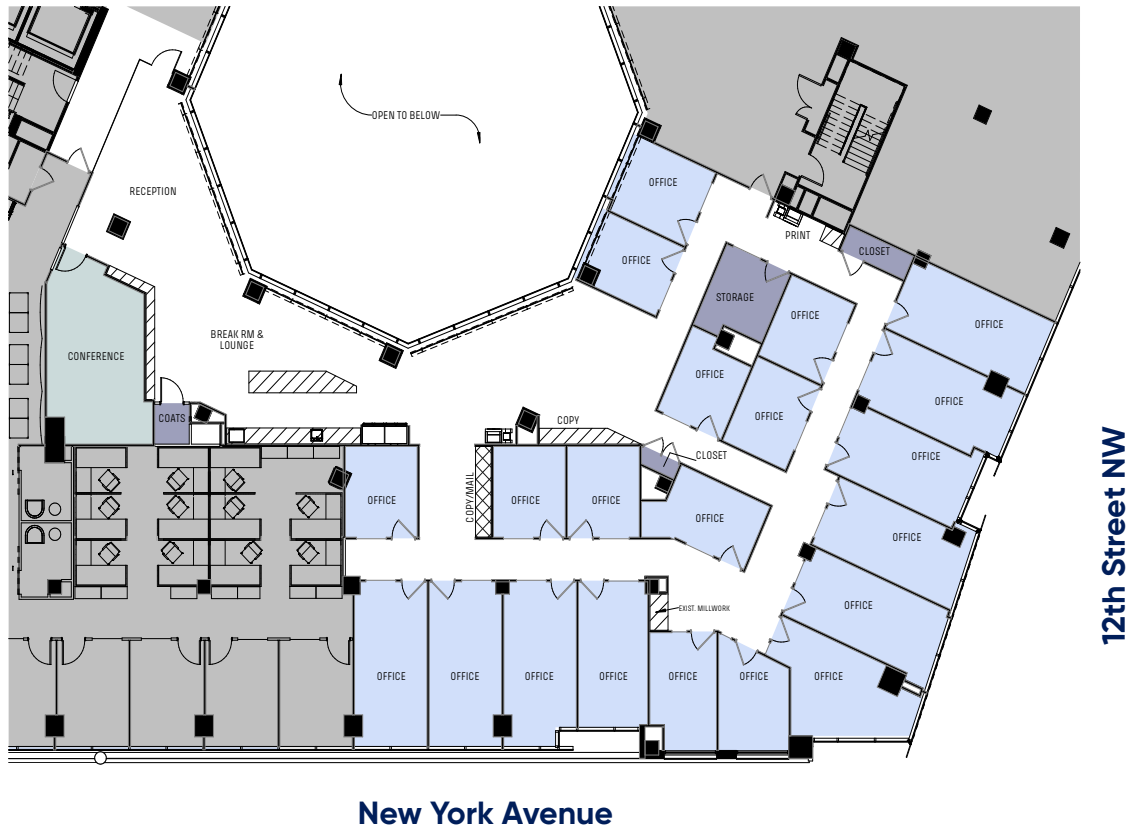
Even though obtained from sources deemed reliable, no warranty or representation, express or implied, is made as to the accuracy of the information herein, and it is subject to errors, omissions, change of price, rental or other conditions, withdrawal without notice, and to any special listing conditions imposed by our principals.



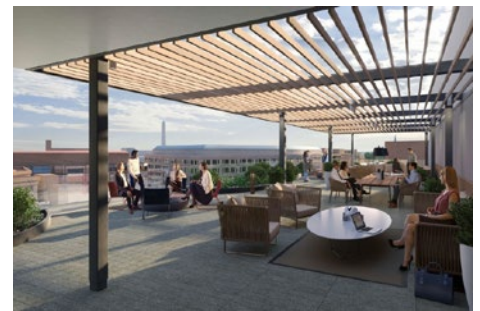


1201 New York Avenue, NW  
Washington, DC

8th Floor – 7,057 SF



## Interior Photos



## For More Information

Cresa  
1800 M Street, NW  
Suite 300N  
Washington, DC 20036  
[cresa.com/washingtondc](http://cresa.com/washingtondc)



Jeremy D. Melmed  
301.741.0806  
[jmelmed@cresa.com](mailto:jmelmed@cresa.com)



Mindy W. Saffer, LEED AP  
202.783.3896  
[msaffer@cresa.com](mailto:msaffer@cresa.com)