



**1130 Connecticut Avenue, NW
Washington, DC 20036**

**Sublease
Available**

Space Profile

Premises

Option 1:

Entire suite available - 9,829 SF

Option 2:

3-5 windowed offices on the 9th floor

Rental Rate

Negotiable

Availability

Immediate

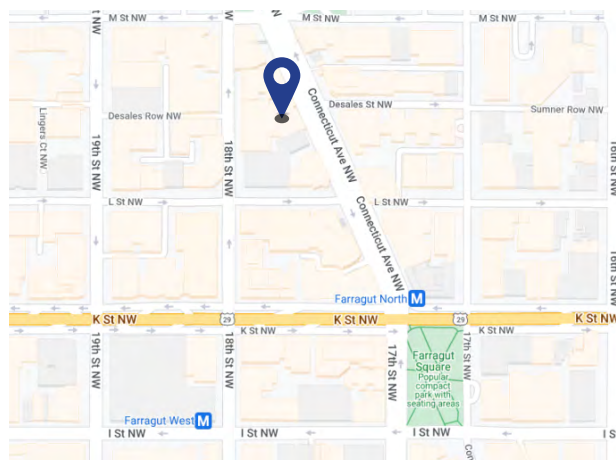
Lease Expiration Date

September 30, 2030

Space Features/ Amenities

- Strong credit worthy sublandlord
- Beautifully renovated in 2020
- Fully furnished
- Double door glass suite entry
- Elevator exposure
- Access to shared Conference Room in suite & Building Tenant Conference Room
- Access to shared copy/print room
- Access to open modern pantry

Map



Take a Virtual Tour



For More Information

Cresa

1800 M Street, NW, Suite 300N
Washington, DC 20036



William Tidwell
703.637.9162
wtidwell@cresa.com



Lucia Hedke
202.294.5359
lucia.hedke@jll.com

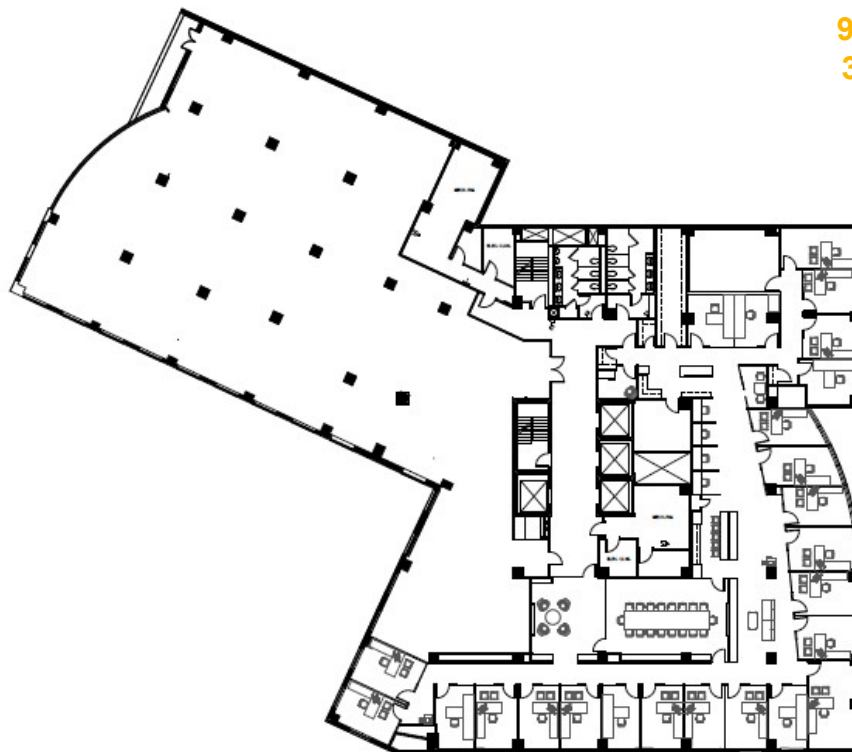
Even though obtained from sources deemed reliable, no warranty or representation, express or implied, is made as to the accuracy of the information herein, and it is subject to errors, omissions, change of price, rental or other conditions, withdrawal without notice, and to any special listing conditions imposed by our principals.

cresa



1130 Connecticut Avenue, NW
Washington, DC 20036

9th Floor - 9,829 SF or
3-5 Windowed Offices



CONNECTICUT AVE



ENTRANCE



CONFERENCE ROOM



OFFICE



LOUNGE AREA