



**400 Burrard St, #1020
Vancouver, BC V6C 3A6**

**Sublease
Available**

Space Profile

- Plug & Play
- Area: 4,457 Rentable SF
- Available: Immediate
- Term: Through 7/31/2022
- Rate: Negotiable
- Operating Costs/Taxes: \$25.82/SF (2019 est.)
- Furniture: Negotiable
- Parking: 1 space per 1,600 SF
- 7 offices, 3 meeting rooms, 18 workstations
- Elevator exposure, superior finishings

Location & Building Description

Commerce Place is a Class 'A', 21-storey office tower located in the heart of Downtown Vancouver's financial core. The asset's quality and location make this a highly desirable building for financial services companies. Minutes to multiple SkyTrain stations, Waterfront Station, numerous bus routes and retail, including restaurants and services.

For More Information

Cresa
777 Hornby Street
Suite 2088
Vancouver, BC V6Z 1S4
cresa.com/vancouver

Ross Moore
604.562.3621
rmoore@cresa.com

Elevator Lobby



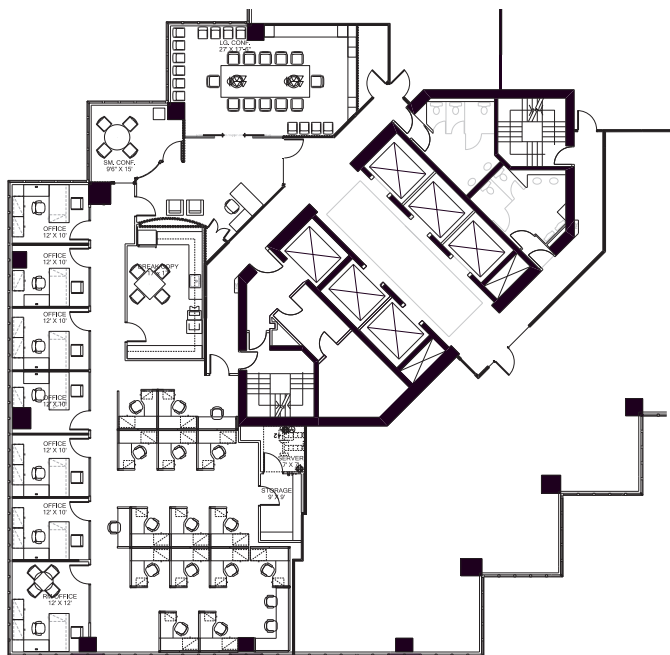
Reception





400 Burrard St
Suite 1020
Vancouver, BC V6C 3A6

Floorplan



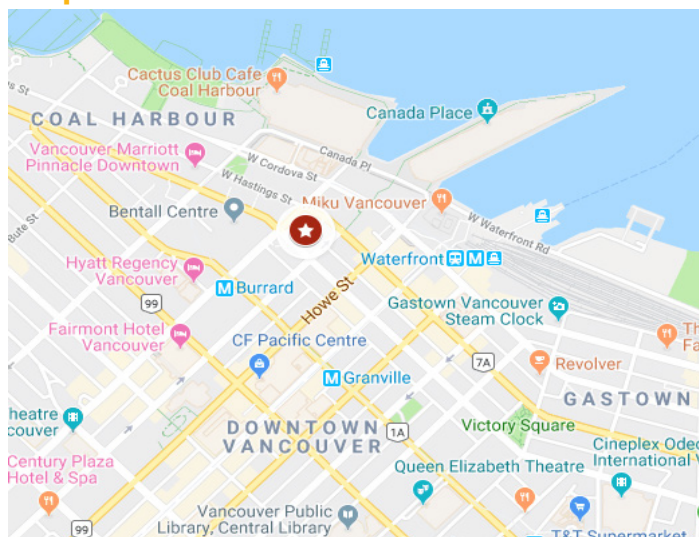
Exterior Office



Meeting Room



Map



For More Information

Cresa
777 Hornby Street, Suite 2088
Vancouver, BC V6Z 1S4
cresa.com/vancouver

Ross Moore
604.562.3621
rmoore@cresa.com