



cresa

SUBLEASE

#950 – 555 Burrard Street
Vancouver, BC

Nicely Improved Class 'A' office space in a LEED Platinum & BOMA Best certified building.

cresa

SUBLEASE

#950 - 555 Burrard Street
Vancouver, BC

Details

Size: 5,418 SF

Net Rent: Contact Agents

Addtl. Rent: \$28.50 PSF (2024 est.)

Available: Immediately

Expiry: 08/30/2026

Furniture: Included (Steelcase)



Get in Touch

Ross Moore
+1 604 628 0522
rmoore@cresa.com

Ella Mosky
+1 604 628 0265
emosky@cresa.com



Well amenitized
building in the heart of
Downtown Vancouver



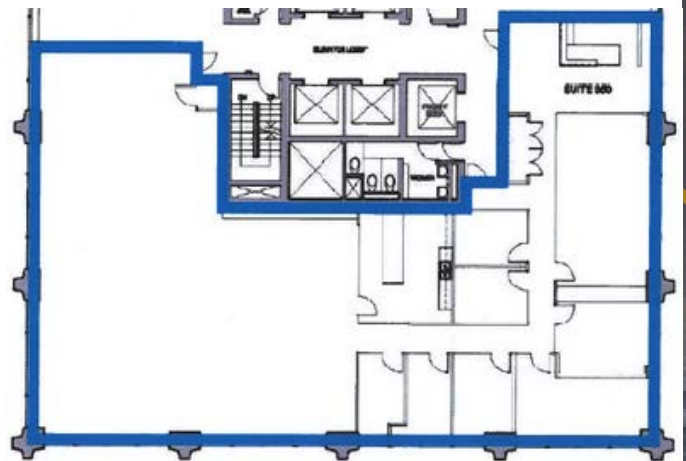
Multiple cafes &
restaurants nearby



Direct access to the
Skytrain Expo Line



Floor Plan



Virtual Tour



[Click Here](#)

cresa

SUBLEASE

#950 – 555 Burrard Street
Vancouver, BC

About

Opportunity to Sublease 5,418 SF of modern and bright office space in Bentall Centre Two. This suite provides direct elevator exposure and is furnished throughout with matching Steelcase furniture.

Suite 950 is improved with 6 private offices, 1 meeting room, 1 large boardroom, a generous reception/ waiting area, full kitchen and, an open work space with 31 work stations. Tenants can also enjoy Bentall Campus amenities which include, tenant-only fitness facility, bookable conference rooms, a dog park and more.



Get in Touch

Ross Moore
+1 604 628 0522
rmoore@cresa.com

Ella Mosky
+1 604 628 0265
emosky@cresa.com

Location



cresa

SUBLEASE

#950 – 555 Burrard Street
Vancouver, BC



Get in Touch

Ross Moore
+1 604 628 0522
rmoore@cresa.com

Ella Mosky
+1 604 628 0265
emosky@cresa.com