



13800 Commerce Pky Richmond, BC V6V 2J3

Sublease Available

Space Profile

- Area: 1,705 - 181,588 SF
- Available: Immediate
- Term: Through 12/31/2023
- Rate: Negotiable
- Operating Costs/Taxes: \$7.57 PSF (2019 est., utilities not included)
- Furniture: Negotiable
- Parking: 2.6 spaces per 1,000 SF
- Cafe & Gym
- Zoning: IB1 (Industrial Business Park)

Location & Building Description

Crestwood Corporate Centre Building 1 is part of one of Vancouver's premier Class A suburban office parks, approximately 25 minutes away from Downtown Vancouver and just 15 minutes to Vancouver International Airport (YVR). Bordered by major thoroughfares, easy access is afforded to the rest of Richmond, Delta, Surrey, New Westminster and points north and south. Transit is available via bus routes #410 and #416.

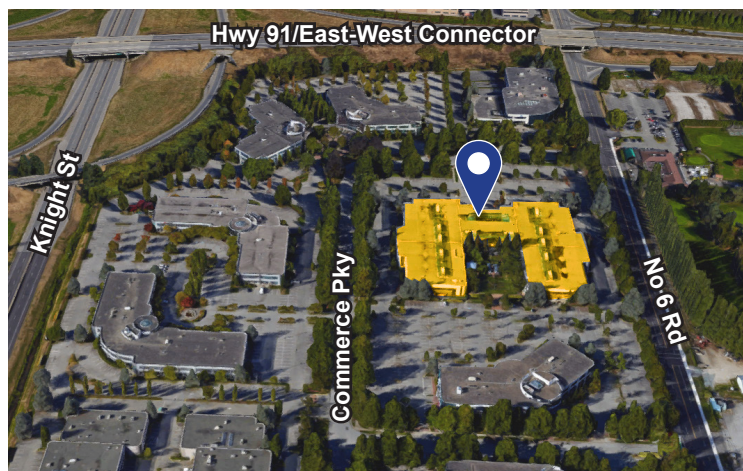
For More Information

Cresa
777 Hornby Street
Suite 2088
Vancouver, BC V6Z 1S4
cresa.com/vancouver

Ross Moore
604 628 0522
rmoore@cresa.com

Arielle Hebein
604 628 8872
ahebein@cresa.com

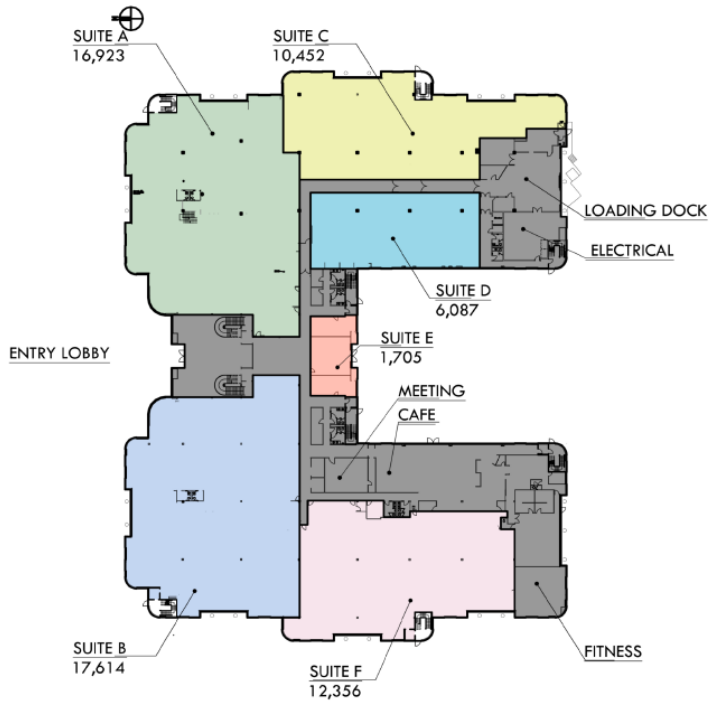
Aerial



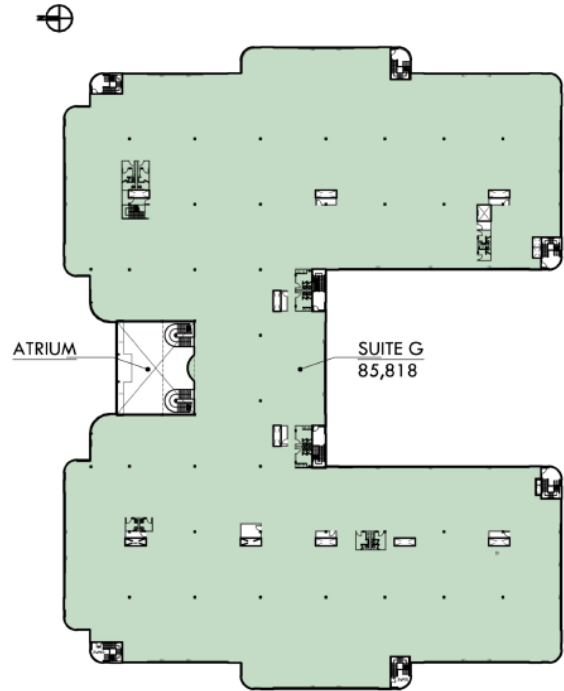
Interior



Footprint | Ground Floor



Footprint | 2nd Floor



Exterior



Map

