



# Suite 1103 – 4720 Kingsway Burnaby, BC V5H 4N2

## Sublease Available

### Space Profile

- Area: 4,817 SF
- Available: 30 Days Notice
- Term: Through 02/29/2024
- Rate: Contact Agent
- Operating Costs/Taxes: \$18.91 PSF (2021 est.)
- Parking: 6 spaces
- Furniture: Available
- Offices: 8 private
- Workstations: 14

### Location & Features

Highly sought after view space available for sublease in one of Burnaby's premier office towers. Metrotower II is part of the Metrotown megaplex boasting an abundance of retail, food services and offers direct access to SkyTrain and transit bus loop. With elevator exposure, the space features high quality finishes, complete with a mix of private offices, open plan work areas, kitchen, meeting rooms, and views looking south and east. Building amenities include fitness gym, end of trip facilities and 24/7 security.

### For More Information

Cresa  
777 Hornby Street  
Suite 2088  
Vancouver, BC V6Z 1S4  
[cresa.com/vancouver](http://cresa.com/vancouver)

Ross Moore  
604 628 0522  
[rmoore@cresa.com](mailto:rmoore@cresa.com)

Arielle Hebein  
604 628 8872  
[ahebein@cresa.com](mailto:ahebein@cresa.com)

### Interior – Office

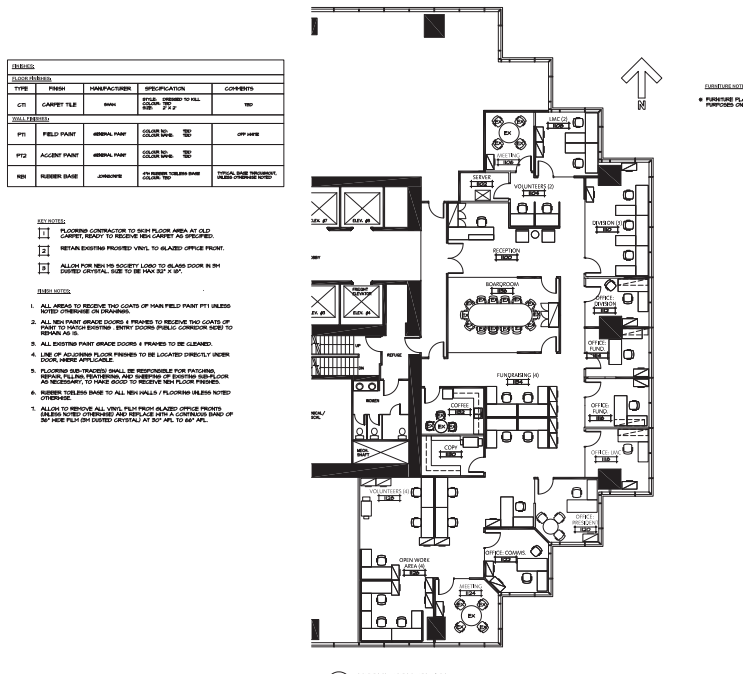


### Interior – Meeting Room





### Suite 1103 Floorplan



### Interior - Office



### Interior - Conference Room



### Map

