

5870 Trinity Parkway, Suite 250
Centreville, VA 20120

Office Sublease
Available

Trinity Centre I Office Space Available



UP TO ±18,886 SF AVAILABLE

For More Information

Avery Rand
Senior Vice President
603.520.7491
arand@cresa.com

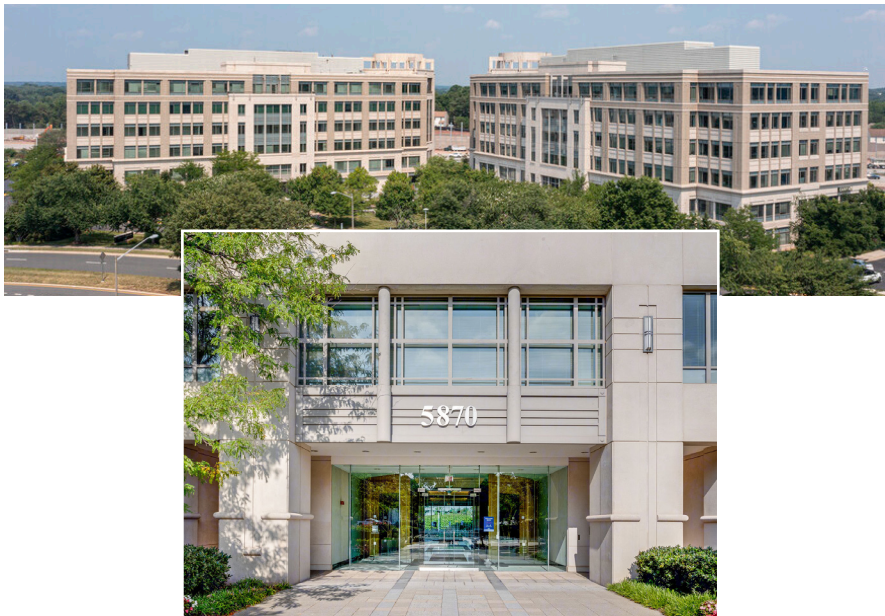
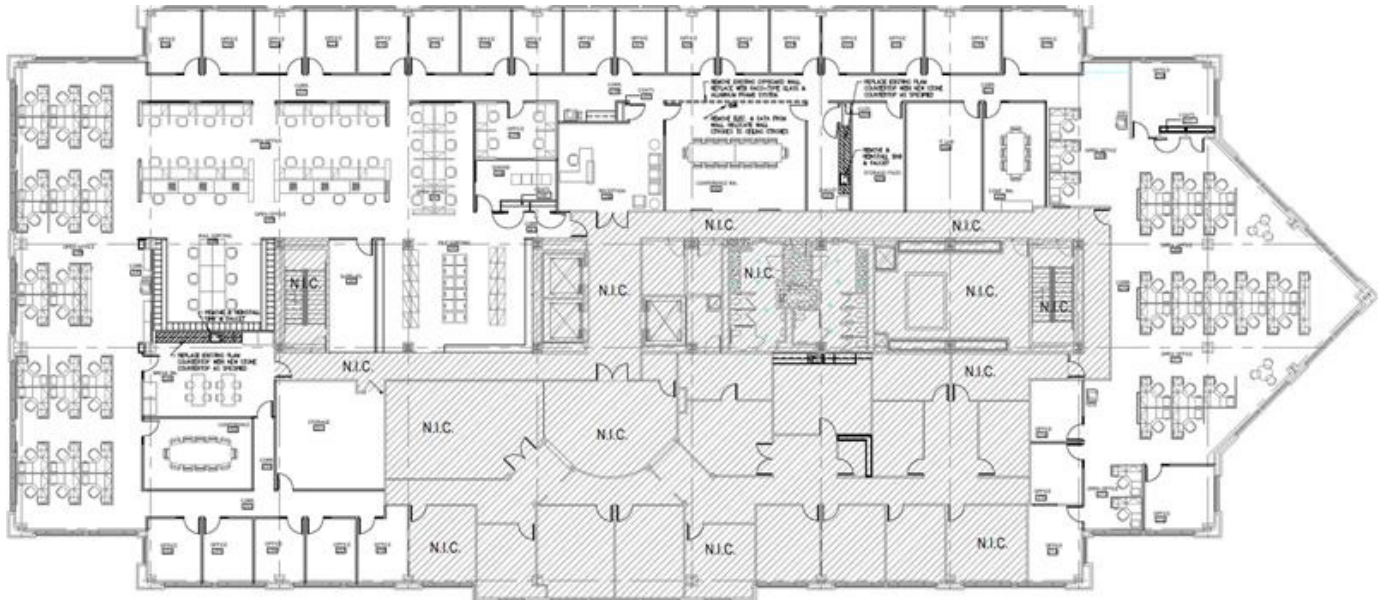
Cresa Washington, D.C.
1800 M Street
Suite 300 N
Washington, D.C. 20036

Even though obtained from sources deemed reliable, no warranty or representation, express or implied, is made as to the accuracy of the information herein, and it is subject to errors, omissions, change of price, rental or other conditions, withdrawal without notice, and to any special listing conditions imposed by our principals.

cresa 

**5870 Trinity Parkway, Suite 250
Centreville, VA 20120**

**Office Sublease
Available**



PROPERTY INFORMATION

Trinity Centre I
5870 Trinity Parkway, Suite 250
Centreville, VA 20120

- Up to ±18,886 SF Available
- Rate: negotiable
- Availability: negotiable
- Term: August 2025
- Communal Outdoor Space
- Parking Ratio: 3.69/1,000 SF
- FREE PARKING
- Furnished
- Break-out Space
- Conference Center
- Security: Key Card Entry
- Phone Booths

For More Information

Avery Rand
Senior Vice President
603.520.7491
arand@cresa.com

Cresa Washington, D.C.
1800 M Street
Suite 300 N
Washington, D.C. 20036

Even though obtained from sources deemed reliable, no warranty or representation, express or implied, is made as to the accuracy of the information herein, and it is subject to errors, omissions, change of price, rental or other conditions, withdrawal without notice, and to any special listing conditions imposed by our principals.



**5870 Trinity Parkway, Suite 250
Centreville, VA 20120**

**Office Sublease
Available**



For More Information

Avery Rand
Senior Vice President
603.520.7491
arand@cresa.com

Cresa Washington, D.C.
1800 M Street
Suite 300 N
Washington, D.C. 20036

Even though obtained from sources deemed reliable, no warranty or representation, express or implied, is made as to the accuracy of the information herein, and it is subject to errors, omissions, change of price, rental or other conditions, withdrawal without notice, and to any special listing conditions imposed by our principals.



**5870 Trinity Parkway, Suite 250
Centreville, VA 20120**

**Office Sublease
Available**



For More Information

Avery Rand
Senior Vice President
603.520.7491
arand@cresa.com

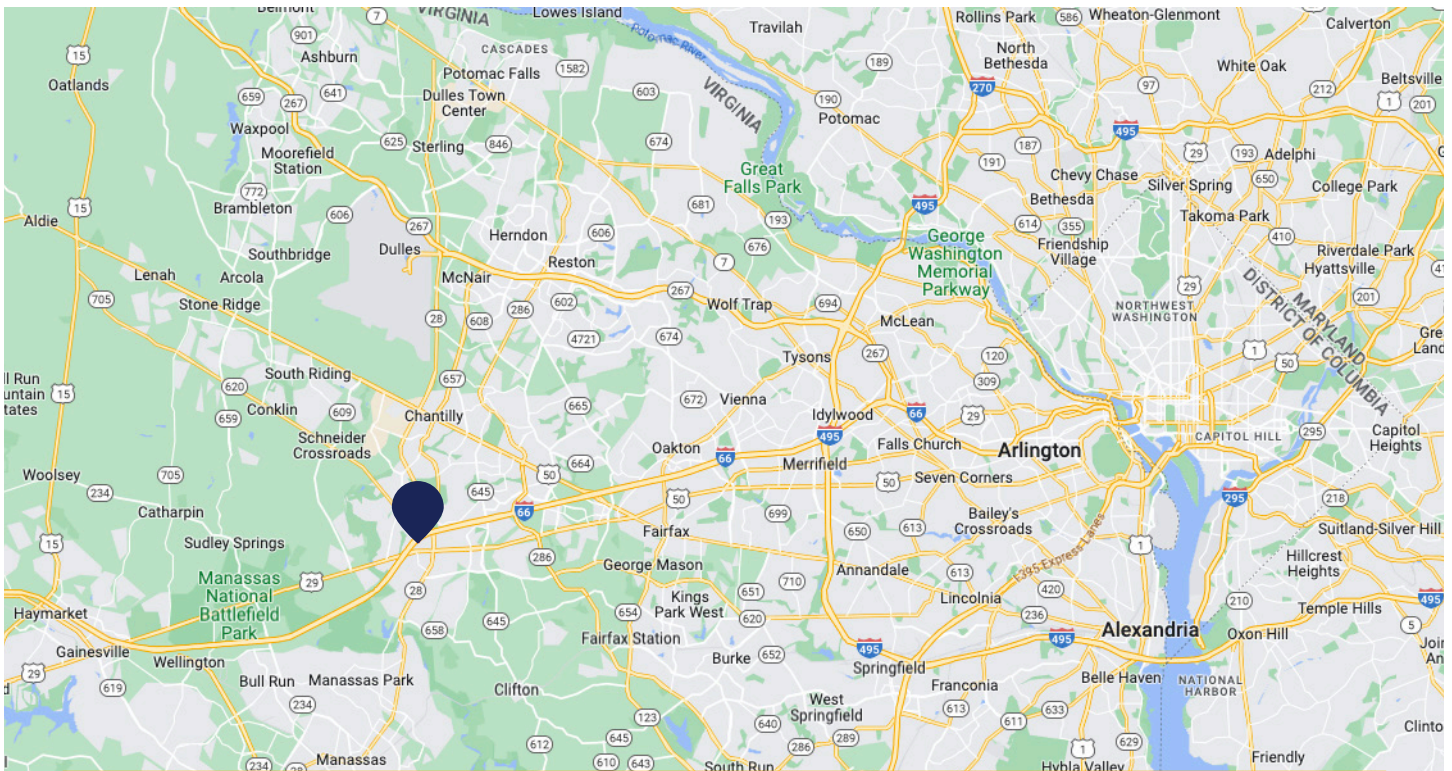
Cresa Washington, D.C.
1800 M Street
Suite 300 N
Washington, D.C. 20036

Even though obtained from sources deemed reliable, no warranty or representation, express or implied, is made as to the accuracy of the information herein, and it is subject to errors, omissions, change of price, rental or other conditions, withdrawal without notice, and to any special listing conditions imposed by our principals.



**5870 Trinity Parkway, Suite 250
Centreville, VA 20120**

**Office Sublease
Available**



**DIRECT ACCESS TO I-66 - 22 MILES TO
DOWNTOWN WASHINGTON D.C.**

**ONLY 8 MILES SOUTH OF
DULLES INTERNATIONAL AIRPORT**

**ON-SITE & WALKABLE
AMENITIES INCLUDE:**

- The Café at Trinity Centre
- Carrabba's
- Chasin' Tails
- The Meat Project
- 24-Hour Fitness
- Spring Hill Suites

**CLOSE BY AMENITIES
INCLUDE:**

- Ciro's Pizza
- Starbuck's & Subway
- Trader Joe's & Giant Food
- Hallmark Store
- CVS Pharmacy
- U.S. Post Office

For More Information

Avery Rand
Senior Vice President
603.520.7491
arand@cresa.com

Cresa Washington, D.C.
1800 M Street
Suite 300 N
Washington, D.C. 20036

Even though obtained from sources deemed reliable, no warranty or representation, express or implied, is made as to the accuracy of the information herein, and it is subject to errors, omissions, change of price, rental or other conditions, withdrawal without notice, and to any special listing conditions imposed by our principals.

