



**Braddock Metro Center III**  
**1330 Braddock Place**  
**Alexandria, VA 22314**

**Sublease**  
**Available**

**Option 1**

Entire Premises: 5,992 RSF on the 3rd floor

**Option 2**

Partial Premises: Combination of offices and workstations

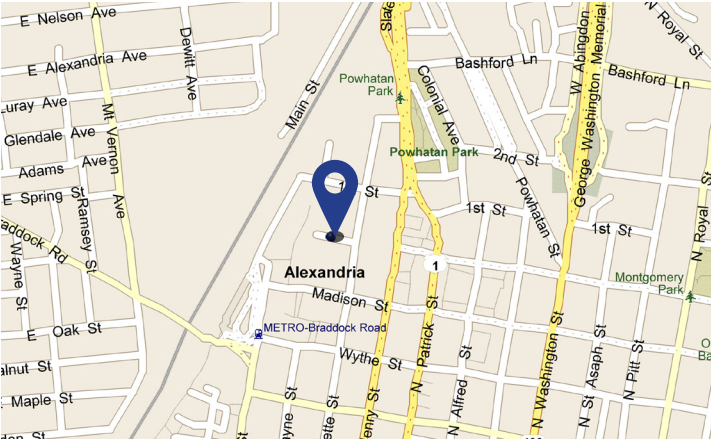
**Rental Rate**     Negotiable

**Availability**    Immediate

**Term**             Flexible; Through November 30, 2023

**Parking**         Available

**Map**



**Features**

- Access to Tenant Conference Room
- Steps from Braddock Metro
- Fully Furnished
- Access to Building Conference Facility, Tenant Lounge and Fitness Center
- On Site Deli/Café
- Garage Parking Available

**For More Information**

**Cresa**  
1800 M Street, NW  
Suite 300N  
Washington, DC 20036  
[cresa.com/washingtondc](http://cresa.com/washingtondc)



**Ross Brannigan**  
781.223.0460  
[rbrannigan@cresa.com](mailto:rbrannigan@cresa.com)



**Mindy W. Saffer, LEED AP**  
202.783.3896  
[msaffer@cresa.com](mailto:msaffer@cresa.com)



**Lucia F. Hedke, LEED GA**  
202.783.3881  
[lhedke@cresa.com](mailto:lhedke@cresa.com)

Even though obtained from sources deemed reliable, no warranty or representation, express or implied, is made as to the accuracy of the information herein, and it is subject to errors, omissions, change of price, rental or other conditions, withdrawal without notice, and to any special listing conditions imposed by our principals.

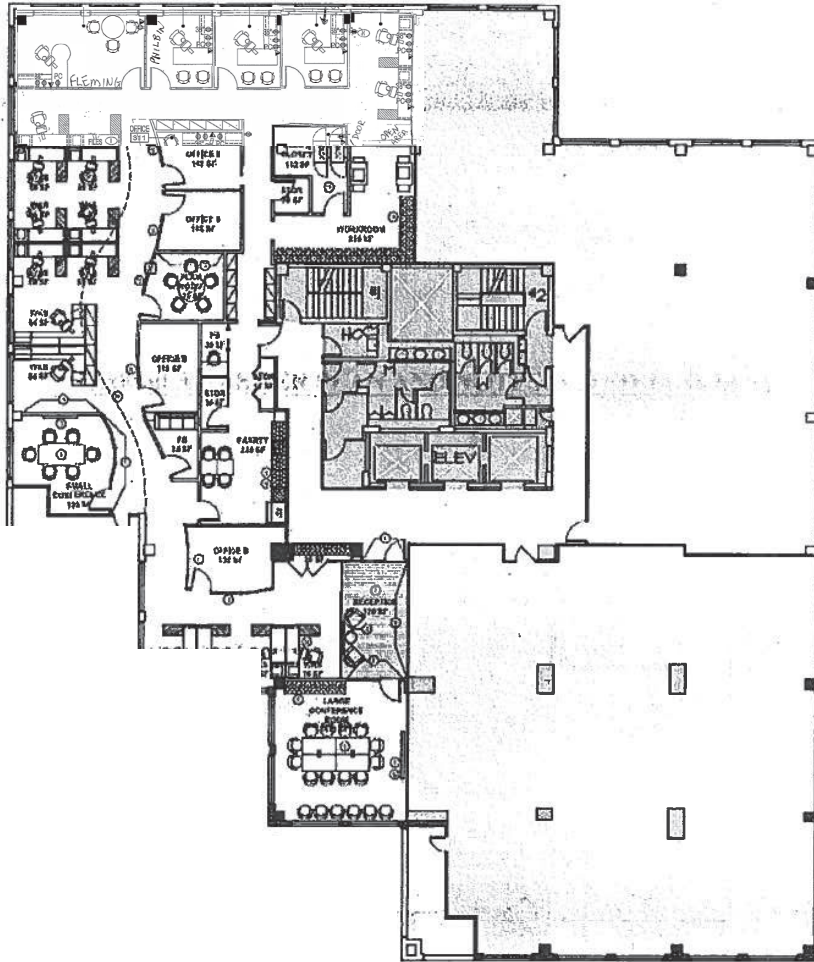






**Braddock Metro Center III  
1330 Braddock Place  
Alexandria, VA 22314**

**3rd Floor - 5,992 RSF**



**Interior Photos**



**OFFICE**



**WORKSTATION**



**WINDOWED OFFICE**