

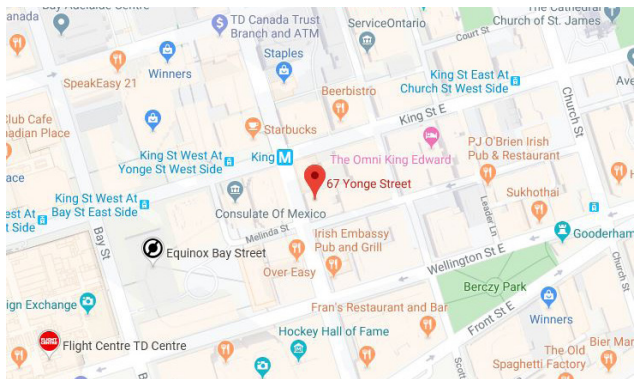


Sublease Available

67 Yonge Street
Toronto, ON

Space Profile

Premises	Suite 401
RSF	1,366 RSF
Net Rent	Please contact Agent
Additional Rent	\$20.16 PSF (2019)
Availability	60 days
Term	June 30, 2026
Building Class	C
Built	1906



Features

- Three enclosed rooms and an open area
- Currently being utilized as classroom space
- Flexible occupancy date

For More Information

Cresa Toronto Inc., Brokerage
170 University Avenue, Suite 1100
Toronto, ON, M5H 3B3
cresa.com/toronto



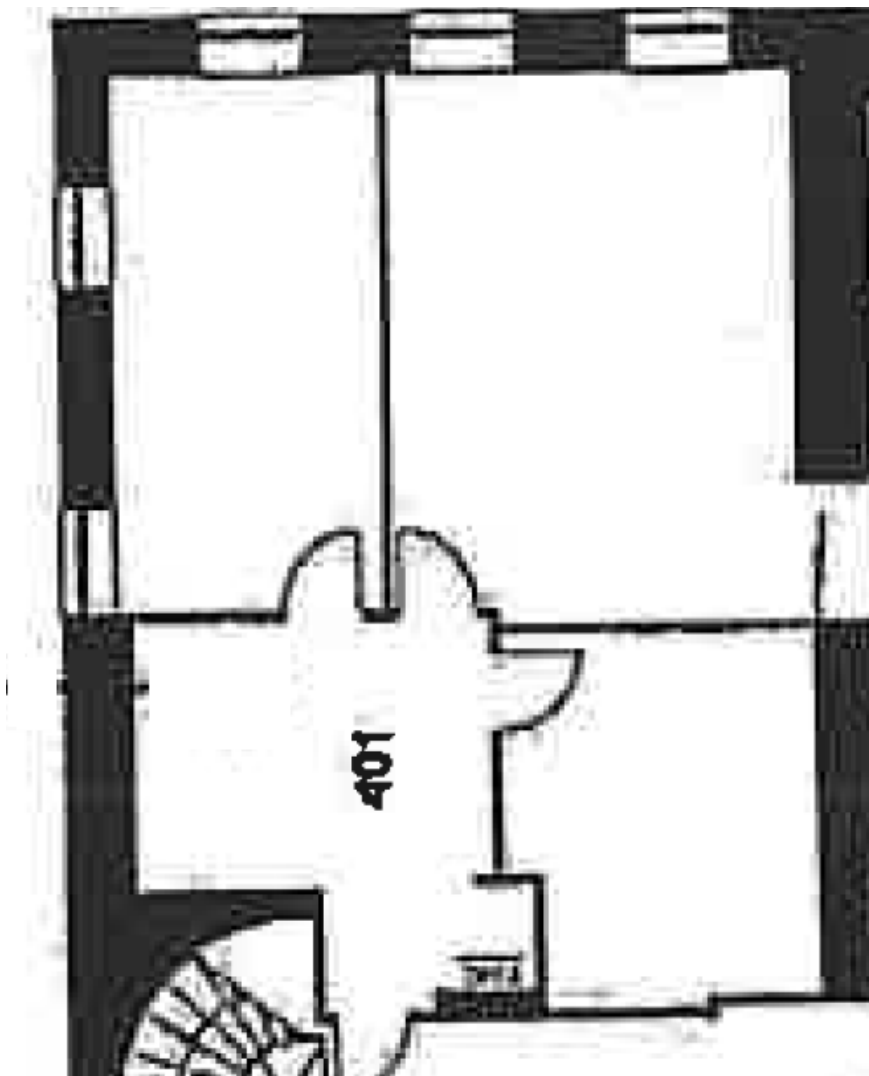
Matthew Rosenberg
Senior Advisor, Sales
Representative

416.847.6220
mrosenberg@cresa.com



**67 Yonge Street
Toronto, ON**

**Suite 401 - 1,366 SF
Floor Plan**



For More Information

Cresa Toronto Inc., Brokerage
170 University Avenue, Suite 1100
Toronto, ON, M5H 3B3
cresa.com/toronto



Matthew Rosenberg
Senior Advisor,
Sales Representative

416.847.6220
mrosenberg@cresa.com





67 Yonge Street
Toronto, ON

Suite 401 - 1,366 SF
Interior Photos



For More Information

Matthew Rosenberg
Senior Advisor,
Sales Representative

416.847.6220
mrosenberg@cresa.com