



Sublease Available

**600 Alden Road
Markham, Ontario**

Space Profile

Premises	3,634 SF, Suite 310
Net Rent	Negotiable
Additional Rent	\$10.30 PSF
Term	Until July 30, 2021
Building Class	B
Built	1989

Map



Features

- Moveable wall in boardroom
- Kitchenette
- Mix of offices and open work areas
- Bright, sunny offices
- Ample surface parking and 4 unreserved under-ground spaces

For More Information

Cresa Toronto Inc., Brokerage
170 University Ave
Suite 1100
Toronto, ON
M5H 3B3



Jamie Grossman
Managing Principal, Broker
416.862.2670
jgrossman@cresa.com

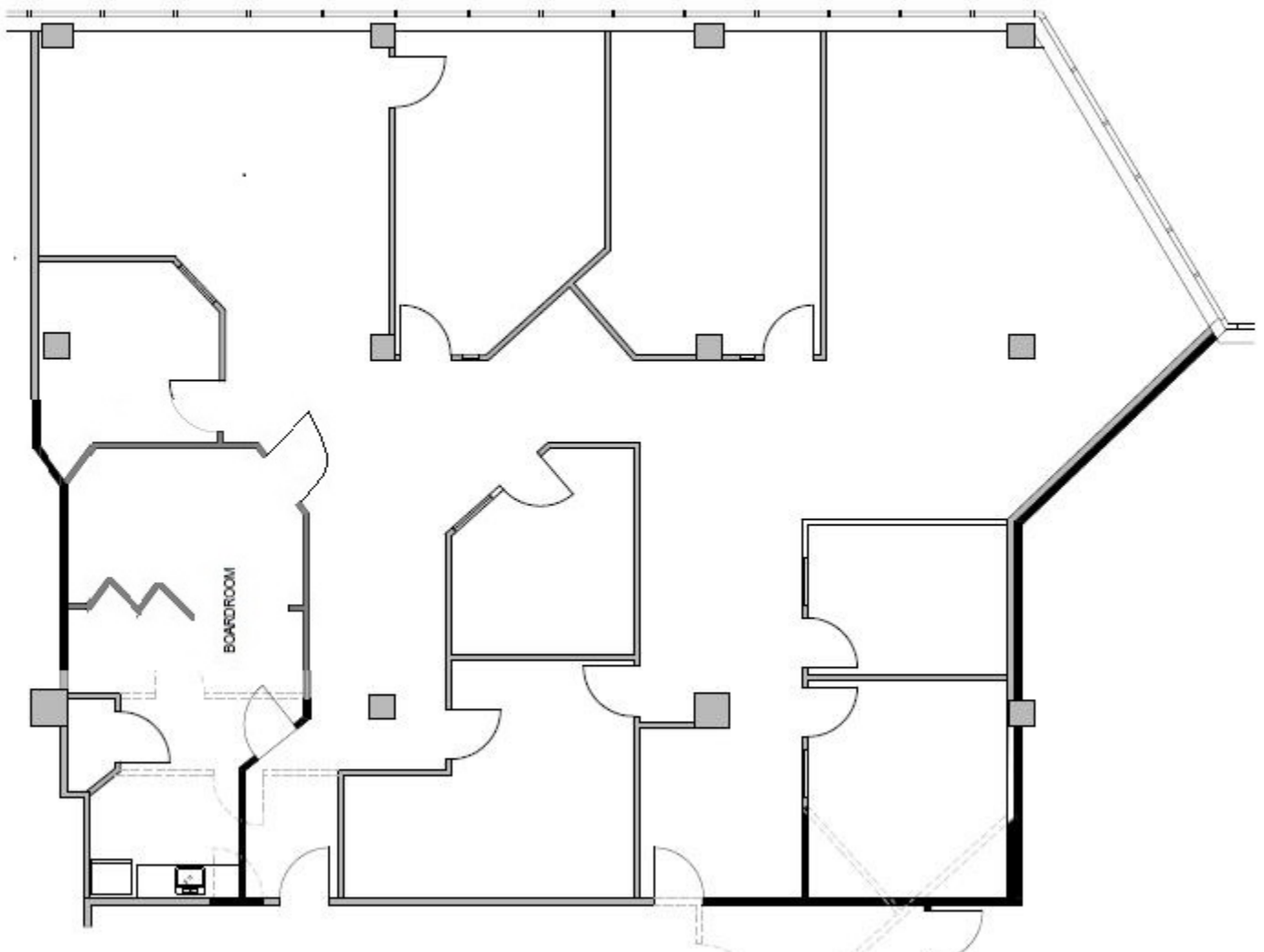


Jeffrey Good
SVP, Sales Representative
416.862.1789
jgood@cresa.com



600 Alden Road
Markham, ON

3,634 SF



For More Information

Cresa Toronto Inc., Brokerage
170 University Ave
Suite 1100
Toronto, ON
M5H 3B3



Jamie Grossman
Managing Principal, Broker
416.862.2670
jgrossman@cresa.com



Jeffrey Good
SVP, Sales Representative
416.862.1789
jgood@cresa.com



600 Alden Road
Markham, ON

3,634 SF

Interior Photos

