

★ Bonus Commission of \$1.50 PSF per year



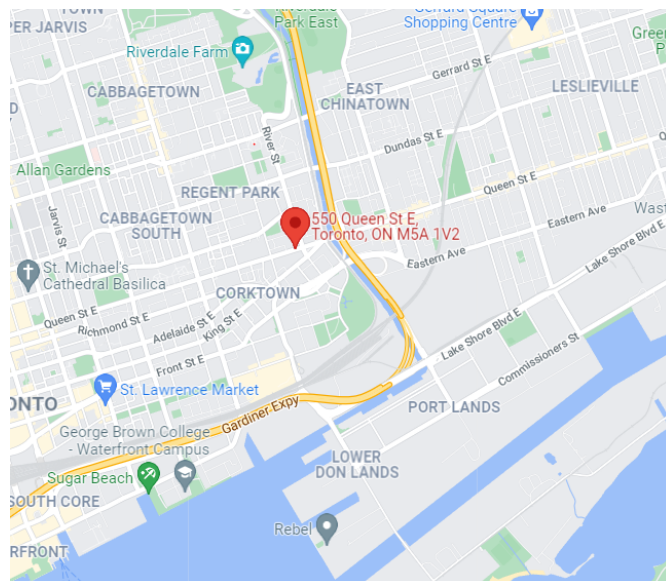
**Sublease Available**

**550 Queen Street East  
Toronto, ON**

### Space Profile

Premises	Suite 201
Total Rentable Area	7,809 SF
Net Rate	Call Agent to Discuss
TMI	\$15.41 (est. 2021)
Availability	30 Days
Expiry	October 30 <sup>th</sup> , 2025

- Fully rebuilt Brick and Beam space
- Option to sublease partial or entire premises
- Professionally designed space
- Loads of Natural Light
- Easy access to TTC
- Parking Available



**Jeff Good**  
Senior Vice President, Sales Representative  
416.862.1789  
jgood@cresa.com



**Ama Joppa**  
Advisor, Sales Representative  
416.847.6208  
ajoppa@cresa.com

### For More Information

**Cresa Toronto Inc., Brokerage**  
170 University Ave, Suite 1100 - Toronto, ON - M5H 3B3  
cresa.com/toronto

Even though obtained from sources deemed reliable, no warranty or representation, express or implied, is made as to the accuracy of the information herein, and it is subject to errors, omissions, change of price, rental or other conditions, withdrawal without notice, and to any special listing conditions imposed by our principals.



**550 Queen Street East  
Toronto, ON**



**Jeff Good**  
Senior Vice President,  
Sales Representative  
416.862.1789  
jgood@cresa.com

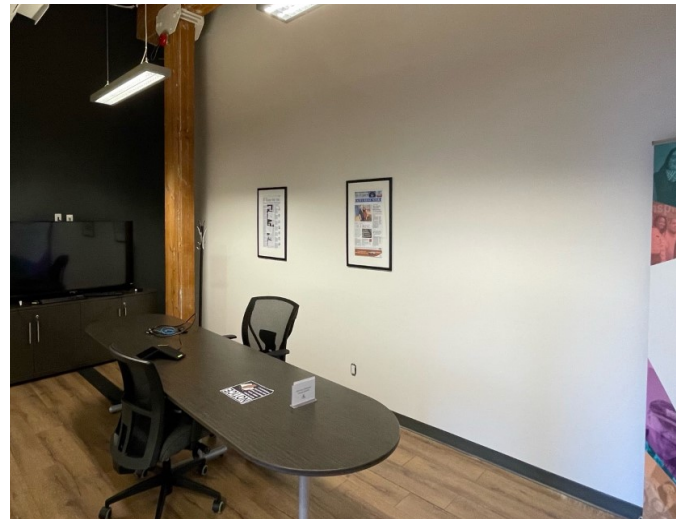


**Ama Joppa**  
Advisor, Sales  
Representative  
416.847.6208  
ajoppa@cresa.com

**For More Information** Cresa Toronto Inc., Brokerage - 170 University Ave, Suite 1100 - Toronto, ON - M5H 3B3 - [cresa.com/toronto](http://cresa.com/toronto)



**550 Queen Street East  
Toronto, ON**

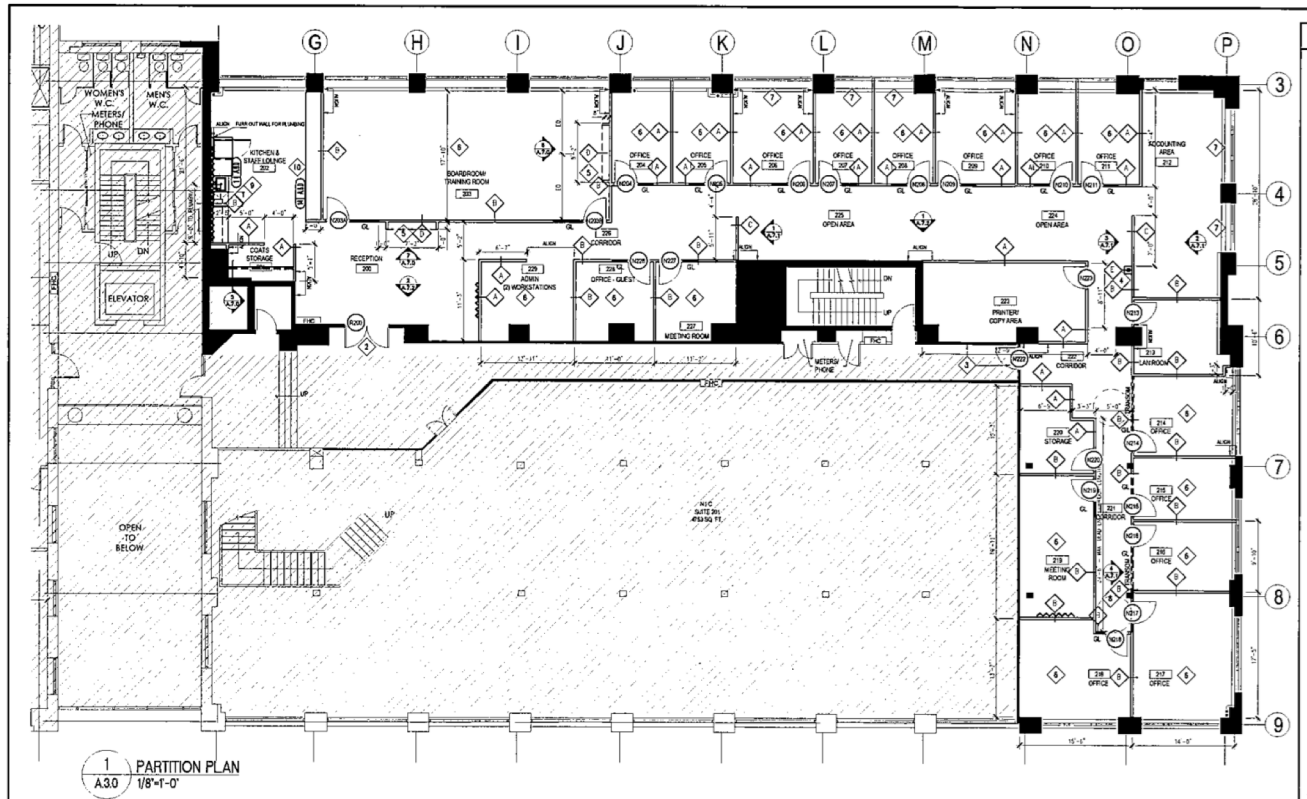


**Jeff Good**  
Senior Vice President,  
Sales Representative  
416.862.1789  
jgood@cresa.com



**Ama Joppa**  
Advisor, Sales  
Representative  
416.847.6208  
ajoppa@cresa.com

# 550 Queen Street East Toronto, ON



**Jeff Good**  
Senior Vice President,  
Sales Representative  
416.862.1789  
jgood@cresa.com



**Ama Joppa**  
Advisor, Sales  
Representative  
416.847.6208  
ajoppa@cresa.com