



Sublease Available

**55 University Avenue
Toronto, ON**

Entire Premises or Ability to Space Share

Space Profile

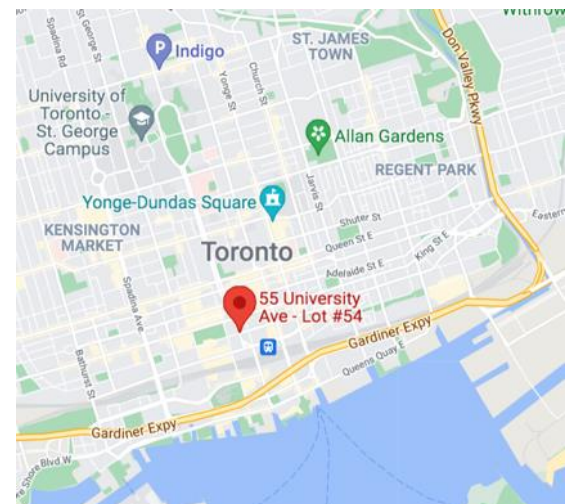
Space	Suite 1100
Options	Entire Premises: 8,181 SF Or Shared Space: 3,000-5,000 SF (Can accommodate based on subtenant needs and ideal configuration/grouping of offices)
Rental Rate	Call Agent to Discuss
Term	Flexible (up to March 31, 2030)

Features

- Well-appointed modern office space
- 26 closed rooms that can be used as offices or meeting rooms
- Large Reception
- Kitchen
- Furniture may be available
- Recently renovated building lobby and elevators

Space Share would include access to:

- Receptionist (Including phone service)
- Mail and package handling
- Large boardroom
- Two additional meeting rooms
- Kitchen with seating



Jamie Grossman
Managing Principal,
Broker
416.862.2670
jgrossman@cresa.com



Matthew Rosenberg
Vice President,
Sales Representative
416.847.6220
mrosenberg@cresa.com

For More Information

Cresa Toronto Inc., Brokerage - 170 University Ave, Suite 1100 - Toronto, ON - M5H 3B3 - cresa.com/toronto

Even though obtained from sources deemed reliable, no warranty or representation, express or implied, is made as to the accuracy of the information herein, and it is subject to errors, omissions, change of price, rental or other conditions, withdrawal without notice, and to any special listing conditions imposed by our principals.



-  **Current Meeting Spaces or Communal Areas**
-  **Current Private Offices**

For More Information

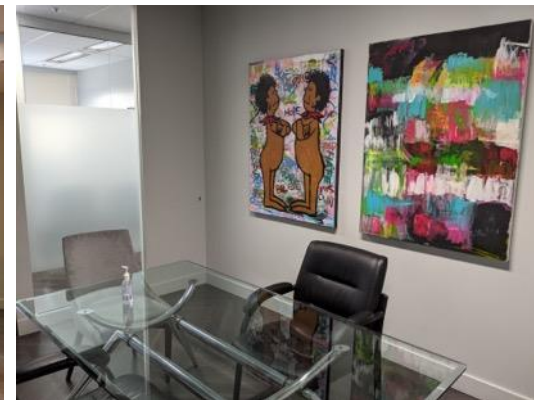
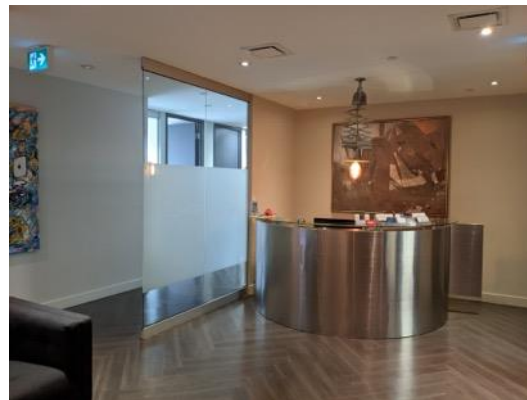
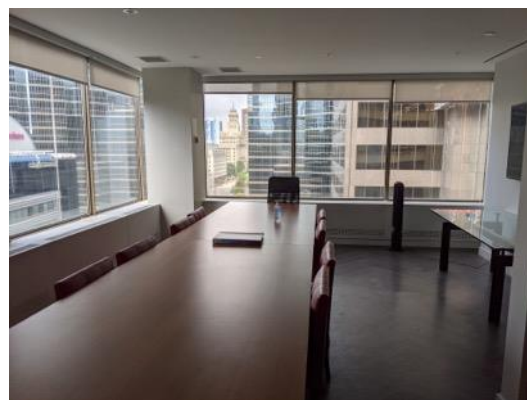
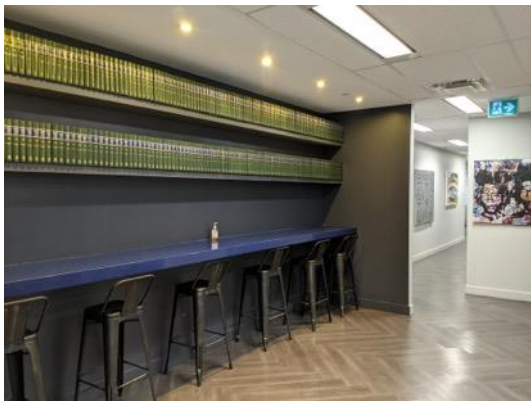
Cresa Toronto Inc., Brokerage
170 University Ave, Suite 1100
Toronto, ON - M5H 3B3
cresa.com/toronto



Jamie Grossman
Managing Principal,
Broker
416.862.2670
jgrossman@cresa.com



Matthew Rosenberg
Vice President,
Sales Representative
416.847.6220
mrosenberg@cresa.com



For More Information

Cresa Toronto Inc., Brokerage
170 University Ave, Suite 1100
Toronto, ON - M5H 3B3
cresa.com/toronto



Jamie Grossman
Managing Principal,
Broker
416.862.2670
jgrossman@cresa.com



Matthew Rosenberg
Vice President,
Sales Representative
416.847.6220
mrosenberg@cresa.com



For More Information

Cresa Toronto Inc., Brokerage
170 University Ave, Suite 1100
Toronto, ON - M5H 3B3
cresa.com/toronto



Jamie Grossman
Managing Principal,
Broker
416.862.2670
jgrossman@cresa.com



Matthew Rosenberg
Vice President,
Sales Representative
416.847.6220
mrosenberg@cresa.com