

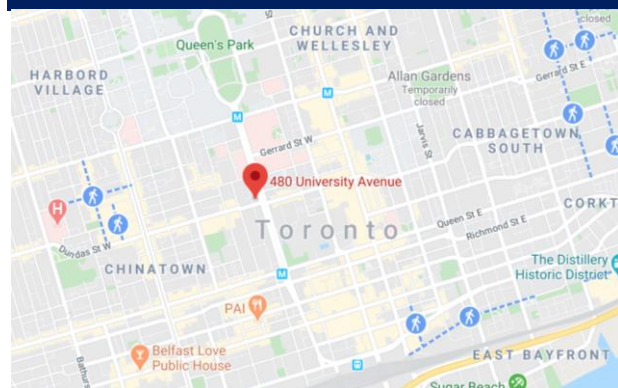
Sublease Available

Space Profile

Premises	Suite 1700
Total Rentable Area	6,073 SF
Asking Net Rent	Contact Agents
Additional Rent	\$24.67
Availability	30 – 60 Days
Term	February 27, 2025

- Top floor of the office tower adjacent to building amenities
- Tenant access to 17th floor SkyClub which includes gym, pool, outdoor terrace and event space
- Space is built out with 12 private offices, a meeting room, reception area, kitchen and open workspace with 12 workstations
- Furniture is negotiable
- Staircase will be enclosed prior to commencement of term
- HEAD landlord will consider longer term

**480 University Avenue
Toronto ON**



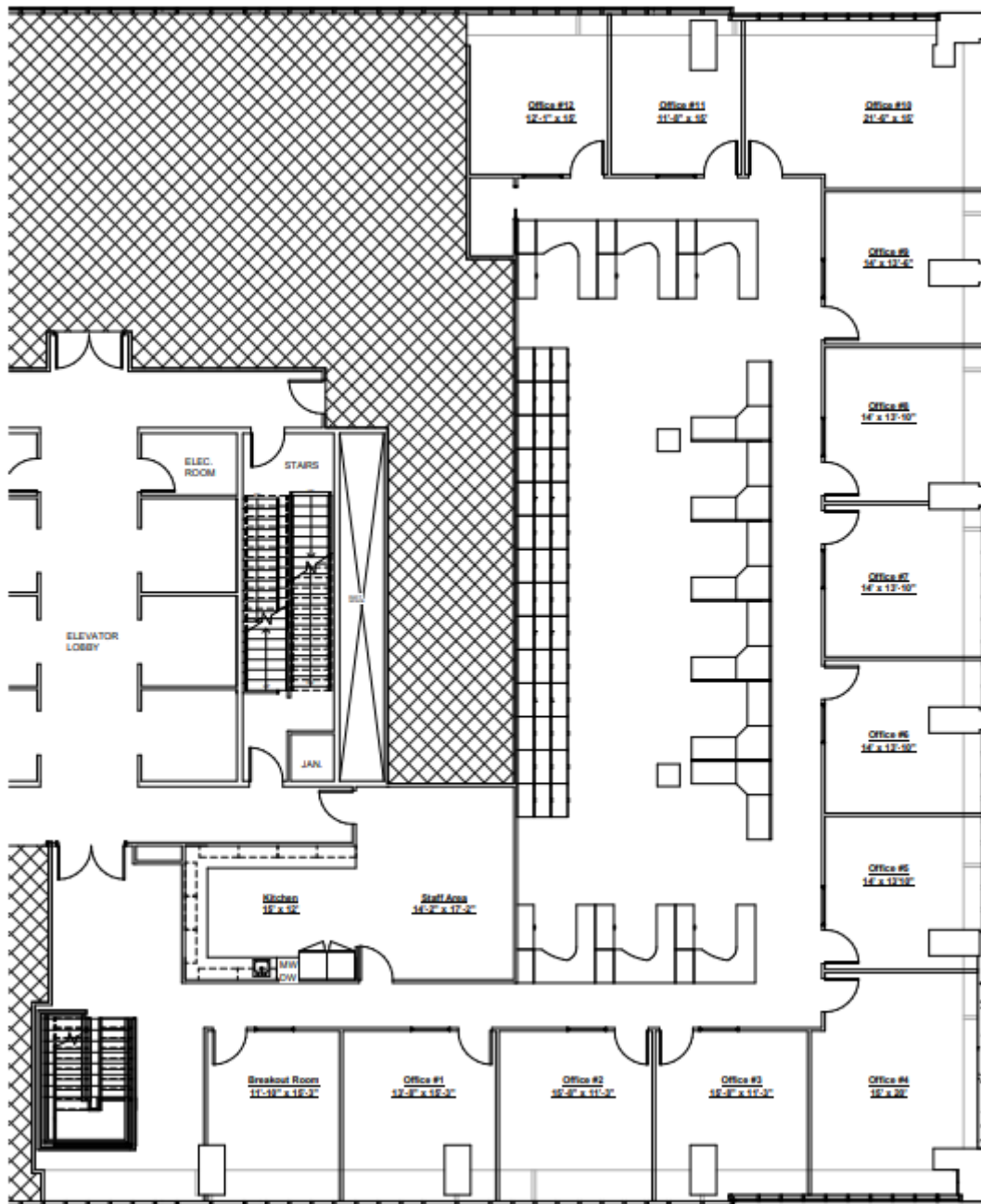
VIEW THE VIRTUAL TOUR 360°



Jeff Sharpe
Vice President,
Sales Representative
647.988.1114
Jeff.sharpe@cresa.com



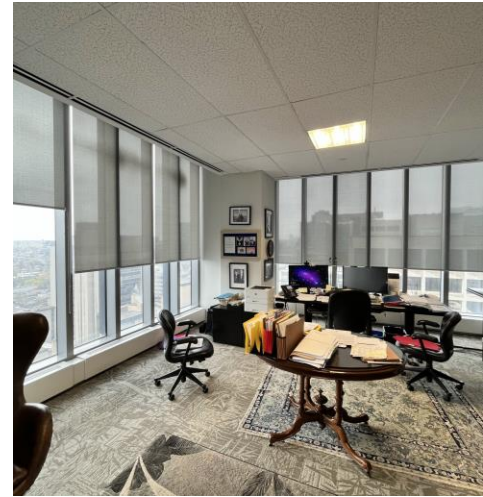
Sean Hoehn
Principal,
Sales Representative
416.862.2669
shoehn@cresa.com



Jeff Sharpe
Vice President,
Sales Representative
647.988.1114
Jeff.sharpe@cresa.com



Sean Hoehn
Managing Principal,
Sales Representative
416.862.2669
shoehn@cresa.com



Jeff Sharpe
Vice President,
Sales Representative
647.988.1114
Jeff.sharpe@cresa.com



Sean Hoehn
Managing Principal,
Sales Representative
416.862.2669
shoehn@cresa.com