



cresa

Sublease Available

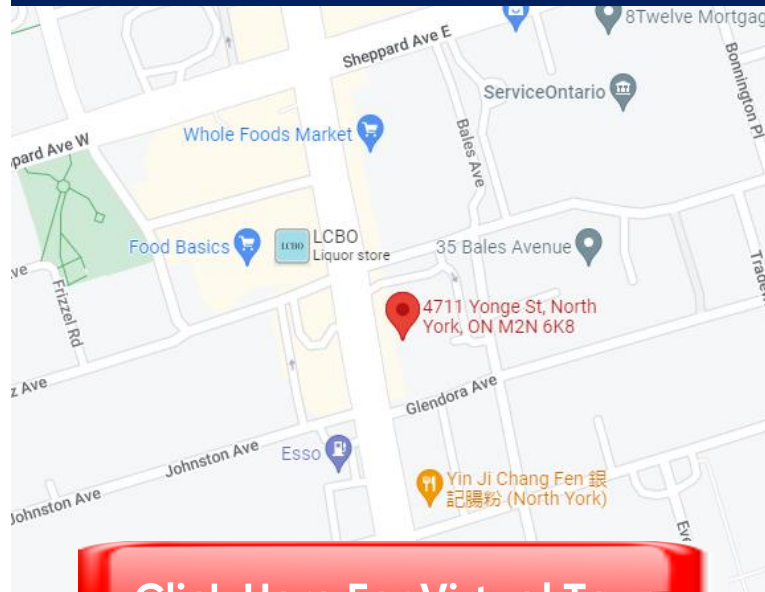
4711 Yonge Street, Toronto ON

Space Profile

Premises	Suite 602
Total Rentable Area	10,083 SF
Net Rate	Call Agent to Discuss
Additional Rent	\$22.90
Term	August 30, 2025

Features

- Exceptional-quality built out space in close proximity to amenity and transit-rich Yonge & Sheppard intersection
- Excellent mix of closed and open spaces
- Direct elevator exposure
- Partially furnished, furniture can be made available with the potential to add more workstations
- Available immediately



[Click Here For Virtual Tour](#)



Mark Titleman
Vice President,
Sales Representative
647.990.8413
mtitleman@cresa.com



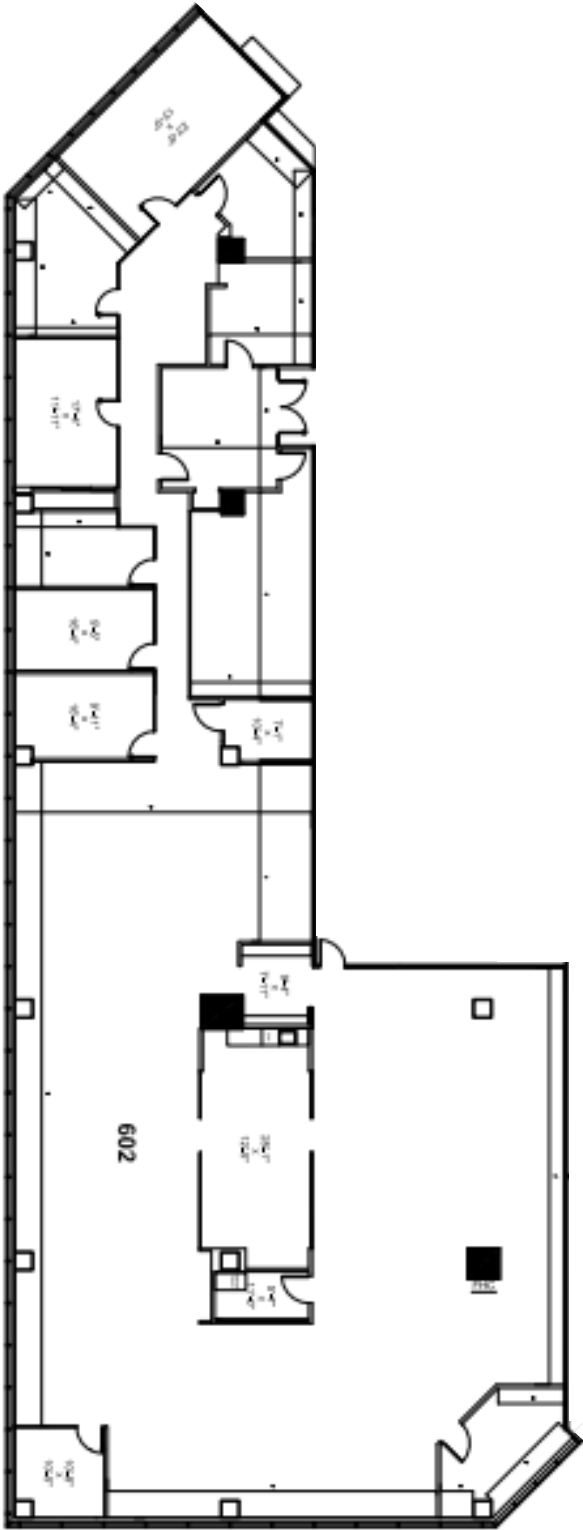
Jamie Grossman
Managing Principal,
Sales Representative
416.862.2670
jgrossman@cresa.com

For More Information

Cresa Toronto Inc., Brokerage
170 University Ave, Suite 1100 - Toronto, ON - M5H 3B3
cresa.com/toronto

Even though obtained from sources deemed reliable, no warranty or representation, express or implied, is made as to the accuracy of the information herein, and it is subject to errors, omissions, change of price, rental or other conditions, withdrawal without notice, and to any special listing conditions imposed by our principals.

4711 Yonge Street, Toronto ON



For More Information

Cresa Toronto Inc., Brokerage
170 University Ave, Suite 1100
Toronto, ON - M5H 3B3
cresa.com/toronto



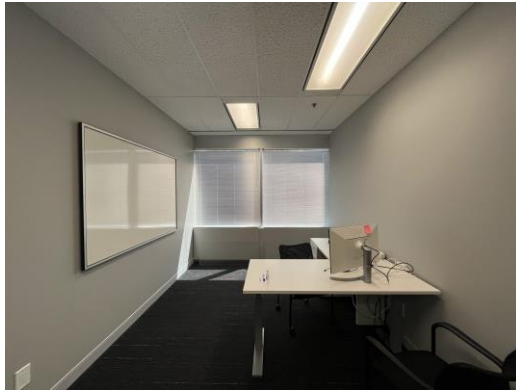
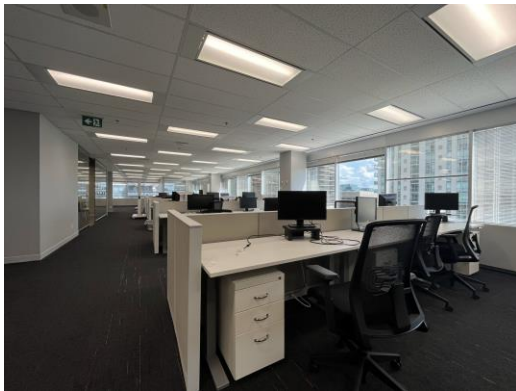
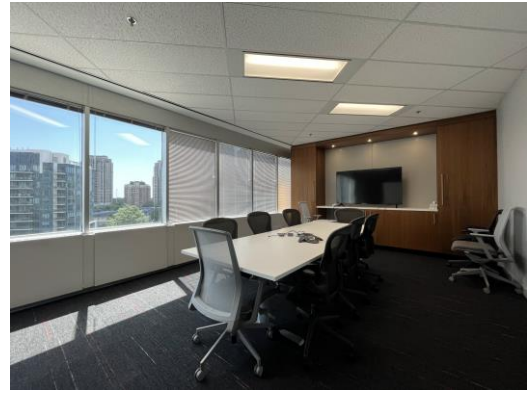
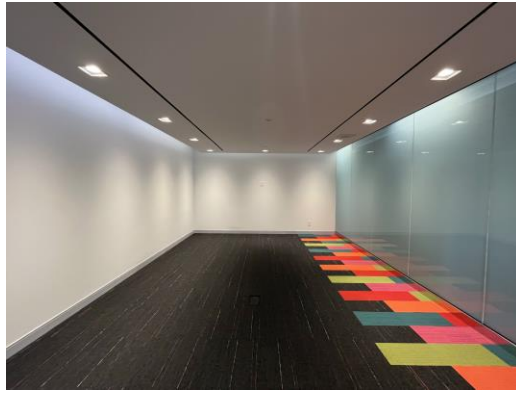
Mark Titleman
Vice President,
Sales Representative
647.990.8413
mtitleman@cresa.com



Jamie Grossman
Managing Principal,
Sales Representative
416.862.2670
jgrossman@cresa.com



4711 Yonge Street, Toronto ON



For More Information

Cresa Toronto Inc., Brokerage
170 University Ave, Suite 1100
Toronto, ON - M5H 3B3
cresa.com/toronto



Mark Titleman
Vice President,
Sales Representative
647.990.8413
mtitleman@cresa.com



Jamie Grossman
Managing Principal,
Sales Representative
416.862.2670
jgrossman@cresa.com