



**\$1.20 PSF/Annum Commission for Co-op Broker**

# Sublease Available

**4 Robert Speck Parkway,  
Mississauga, ON**

## Space Profile

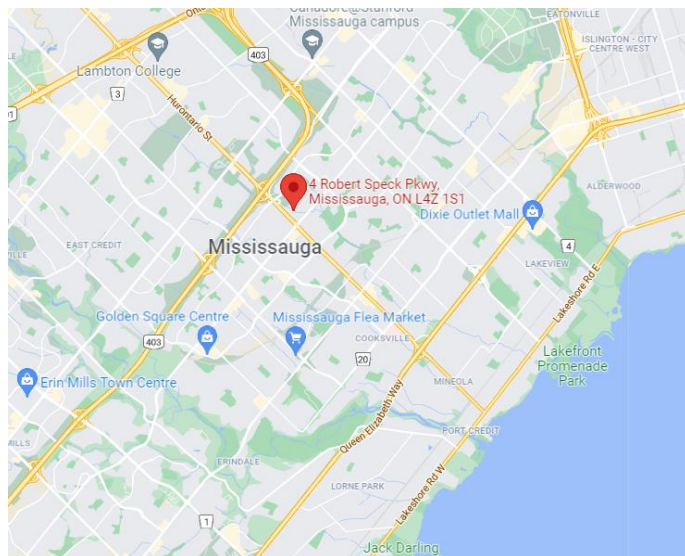
Premises	Suite 1620
Total Rentable Area	4,892 SF
Net Rate	Please Contact Agent
Additional Rent	\$18.65 (2020 est.)
Term:	April 29 <sup>th</sup> , 2024
Available:	Immediate

## Features

- Recently Built Out space
- High Quality Improvement with ample natural Light
- Elevator Exposure
- 19 Private offices
- 1 Large and 1 Small meeting room
- Large kitchen area
- Furniture Negotiable

## For More Information

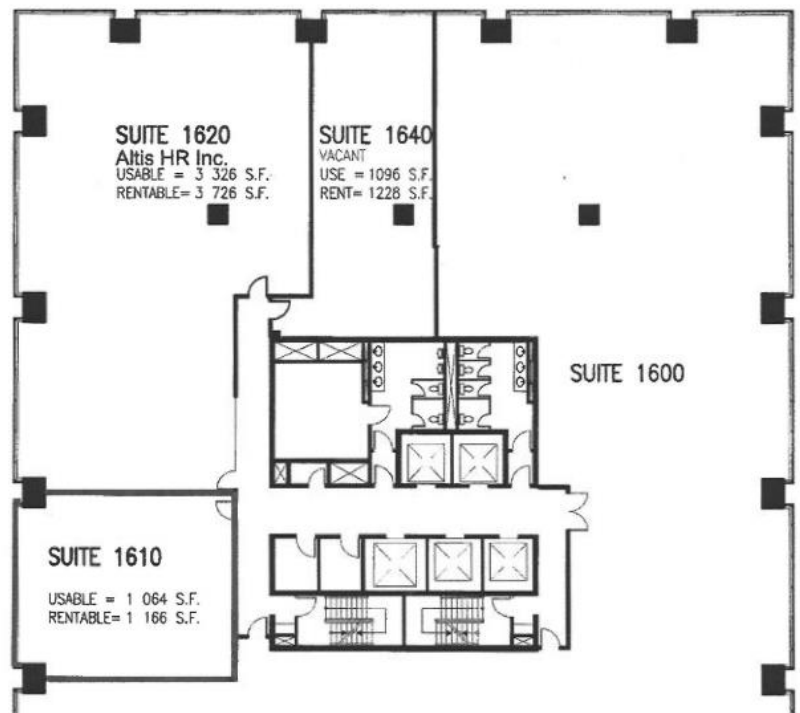
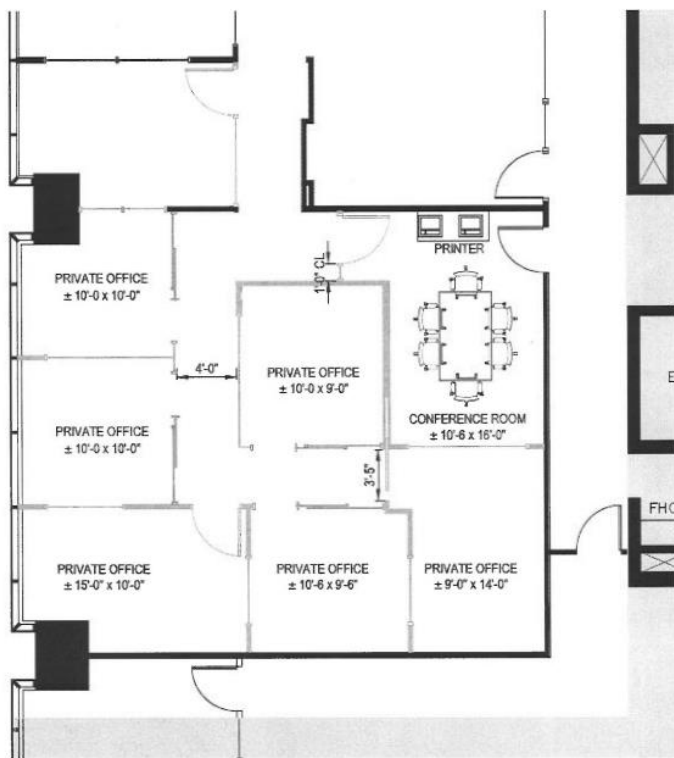
**Cresa Toronto Inc., Brokerage**  
170 University Ave, Suite 1100  
Toronto, ON  
M5H 3B3  
[cresa.com/toronto](http://cresa.com/toronto)



**Mark Skynner**  
Principal,  
Sales Representative  
416.862.2592  
[mskynner@cresa.com](mailto:mskynner@cresa.com)



**Ashton Glenn**  
Advisor,  
Sales Representative  
905.808.5375  
[aglenn@cresa.com](mailto:aglenn@cresa.com)



### For More Information

**Cresa Toronto Inc., Brokerage**  
170 University Ave, Suite 1100  
Toronto, ON - M5H 3B3  
[cresa.com/toronto](http://cresa.com/toronto)



**Mark Skyner**  
Principal,  
Sales Representative  
416.862.2592  
[mskyner@cresa.com](mailto:mskyner@cresa.com)



**Ashton Glenn**  
Advisor,  
Sales Representative  
905.808.5375  
[aglen@cresa.com](mailto:aglen@cresa.com)





## For More Information

**Cresa Toronto Inc., Brokerage**  
170 University Ave, Suite 1100  
Toronto, ON - M5H 3B3  
[cresa.com/toronto](http://cresa.com/toronto)



**Mark Skyner**  
Principal,  
Sales Representative  
416.862.2592  
[mskyner@cresa.com](mailto:mskyner@cresa.com)



**Ashton Glenn**  
Advisor,  
Sales Representative  
905.808.5375  
[aglenn@cresa.com](mailto:aglenn@cresa.com)