



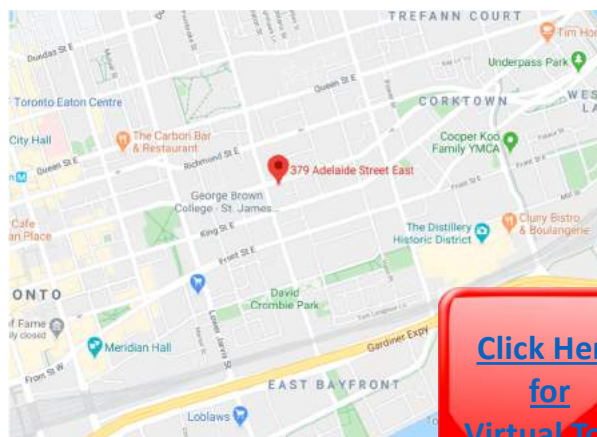
# Sublease Available

## Plug & Play, \*Move-In Ready Space

**379 Adelaide St West  
Toronto, ON**

### Space Profile

Premises	Suite 400
Total Rentable Area	7,427 SF
Net Rate	Call Agent to Discuss
Additional Rent	\$19.28
Availability	Immediately
Expiry Date	Nov 29, 2021



[Click Here  
for  
Virtual Tour](#)

### Features

- Top floor of building
- Both elevator and walk up access to suite
- One large boardroom (12-14), one medium sized meeting room (8-10), and one team rooms (4-6)
- Mix of workstations and offices that accommodate a team upwards of 41 staff
- Server and storage room in-suite
- Furniture is available

### For More Information

**Cresa Toronto Inc., Brokerage**  
170 University Ave, Suite 1100  
Toronto, ON - M5H 3B3  
[cresa.com/toronto](http://cresa.com/toronto)



**Andrew Chapman**  
Principal, Sales Representative  
416.862.0659  
[achapman@cresa.com](mailto:achapman@cresa.com)



**Mark Skynner**  
Principal, Sales Representative  
416.616.9060  
[mksynner@cresa.com](mailto:mksynner@cresa.com)



**Jamie Grossman**  
Managing Principal  
416.862.2670  
[jgrossman@cresa.com](mailto:jgrossman@cresa.com)

Even though obtained from sources deemed reliable, no warranty or representation, express or implied, is made as to the accuracy of the information herein, and it is subject to errors, omissions, change of price, rental or other conditions, withdrawal without notice, and to any special listing conditions imposed by our principals.





379 Adelaide St West  
Toronto, ON



**For More Information** Cresa Toronto Inc., Brokerage - 170 University Ave, Suite 1100 - Toronto, ON - M5H 3B3 - [cresa.com/toronto](http://cresa.com/toronto)



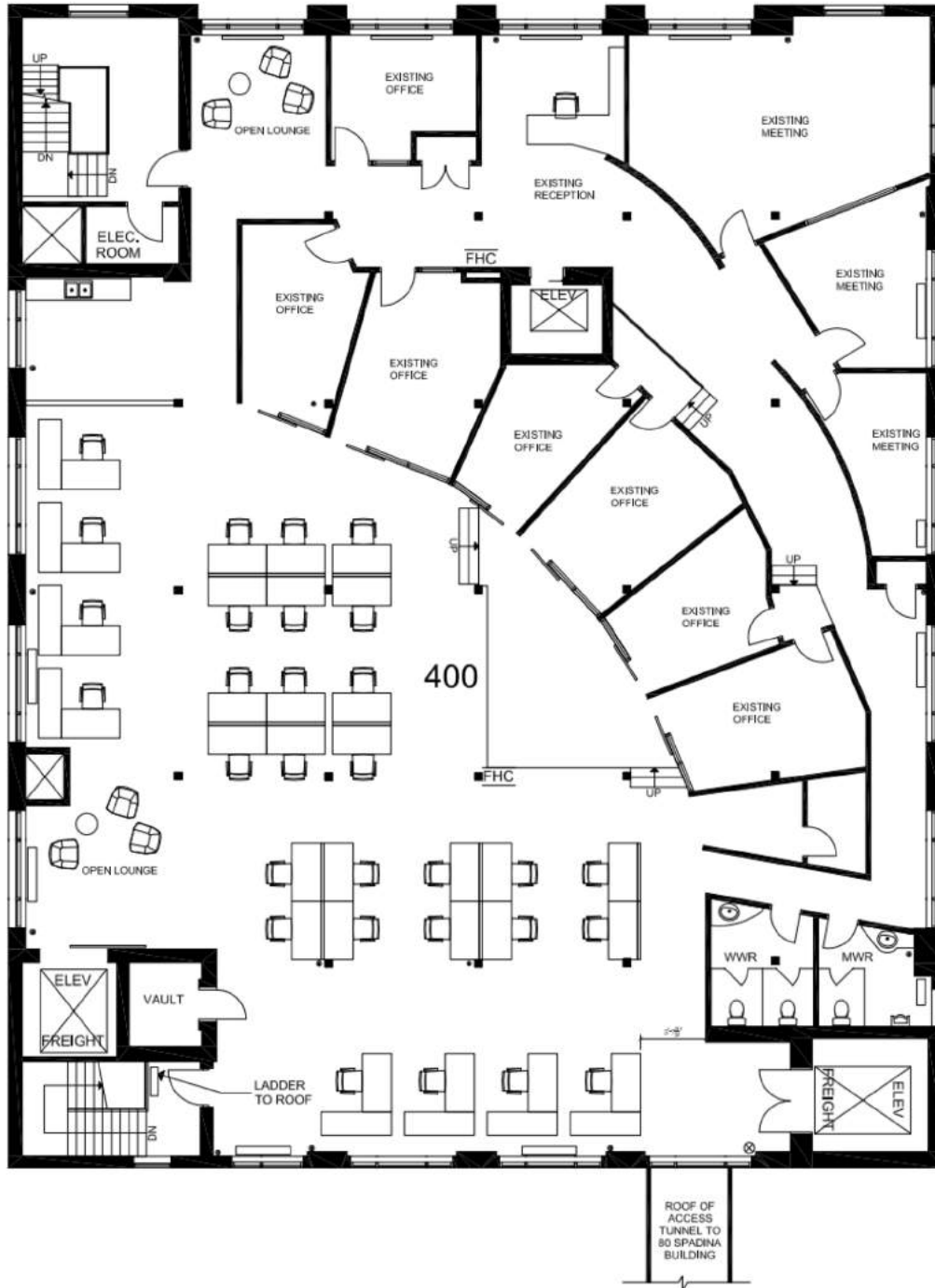
**Andrew Chapman**  
Principal, Sales Representative  
416.862.0659  
[achapman@cresa.com](mailto:achapman@cresa.com)



**Mark Skynner**  
Principal, Sales Representative  
416.616.9060  
[mskynner@cresa.com](mailto:mskynner@cresa.com)



**Jamie Grossman**  
Managing Principal  
416.862.2670  
[jgrossman@cresa.com](mailto:jgrossman@cresa.com)



**For More Information** Cresa Toronto Inc., Brokerage - 170 University Ave, Suite 1100 - Toronto, ON - M5H 3B3 - [cresa.com/toronto](http://cresa.com/toronto)



**Andrew Chapman**  
Principal, Sales Representative  
416.862.0659  
[achapman@cresa.com](mailto:achapman@cresa.com)



**Mark Skynner**  
Principal, Sales Representative  
416.616.9060  
[mskynner@cresa.com](mailto:mskynner@cresa.com)



**Jamie Grossman**  
Managing Principal  
416.862.2670  
[jgrossman@cresa.com](mailto:jgrossman@cresa.com)