

## Space Profile

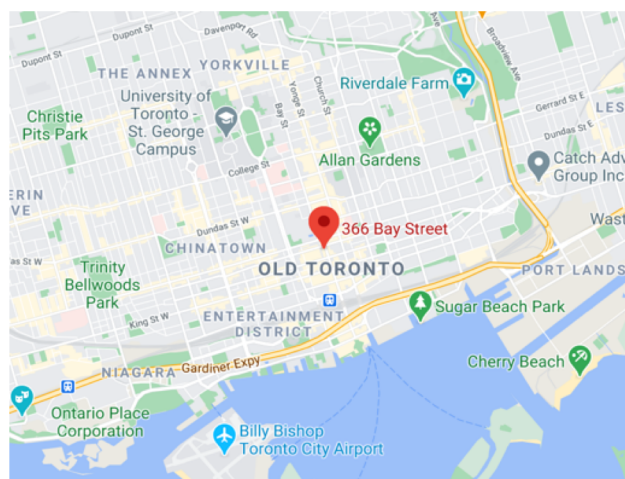
Premises	Suite 600
Total Rentable Area	3,092SF
Net Rate	Call Agent to Discuss
Additional Rent	\$32.00
Availability	Immediately
Term	September 29, 2021

## Features

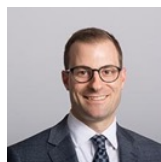
- Secure direct elevator access into the suite
- Exposed ceiling with new modern LED lighting
- Space is built-out with a boardroom, five private offices, a kitchen and 16 workstations
- Furniture is available
- Steps from the PATH and TTC
- Virtual tour is available

## For More Information

**Cresa Toronto Inc., Brokerage**  
 170 University Ave, Suite 1100  
 Toronto, ON  
 M5H 3B3  
[cresa.com/toronto](http://cresa.com/toronto)



**Mark Zettel MBA, CPA, CMA**  
 Principal, Sales Representative  
 647.409.5212  
[mzettel@cresa.com](mailto:mzettel@cresa.com)



**Jeff Sharpe**  
 Advisor, Sales Representative  
 647.988.1114  
[jeff.sharpe@cresa.com](mailto:jeff.sharpe@cresa.com)

Even though obtained from sources deemed reliable, no warranty or representation, express or implied, is made as to the accuracy of the information herein, and it is subject to errors, omissions, change of price, rental or other conditions, withdrawal without notice, and to any special listing conditions imposed by our principals.



366 Bay St  
Toronto, ON

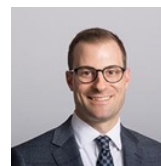


### For More Information

**Cresa Toronto Inc., Brokerage**  
170 University Ave, Suite 1100 Toronto, ON - M5H 3B3 - [cresa.com/toronto](http://cresa.com/toronto)



**Mark Zettel MBA, CPA, CMA**  
Principal, Sales Representative  
647.409.5212  
[mzettel@cresa.com](mailto:mzettel@cresa.com)



**Jeff Sharpe**  
Advisor, Sales Representative  
647.988.1114  
[jeff.sharpe@cresa.com](mailto:jeff.sharpe@cresa.com)





366 Bay St  
Toronto, ON

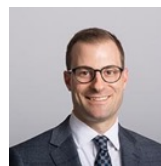


### For More Information

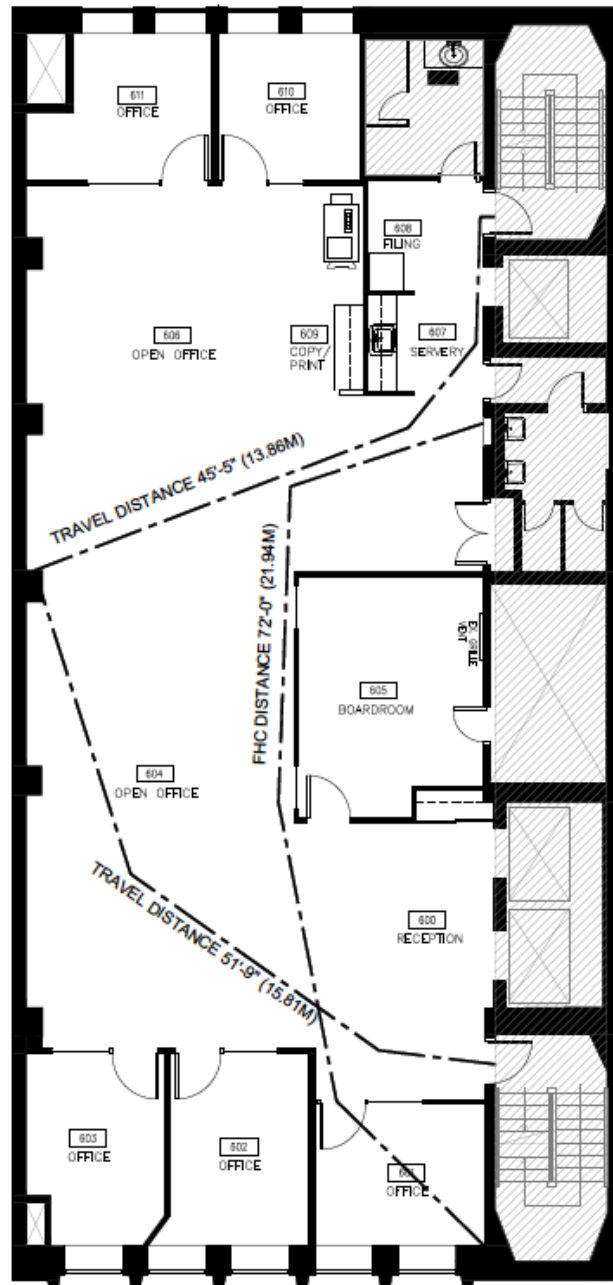
**Cresa Toronto Inc., Brokerage**  
170 University Ave, Suite 1100 Toronto, ON - M5H 3B3 - [cresa.com/toronto](http://cresa.com/toronto)



**Mark Zettel MBA, CPA, CMA**  
Principal, Sales Representative  
647.409.5212  
[mzettel@cresa.com](mailto:mzettel@cresa.com)



**Jeff Sharpe**  
Advisor, Sales Representative  
647.988.1114  
[jeff.sharpe@cresa.com](mailto:jeff.sharpe@cresa.com)

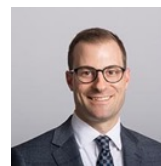


### For More Information

**Cresa Toronto Inc., Brokerage**  
170 University Ave, Suite 1100 Toronto, ON - M5H 3B3 - [cresa.com/toronto](http://cresa.com/toronto)



**Mark Zettel MBA, CPA, CMA**  
Principal, Sales Representative  
647.409.5212  
[mzettel@cresa.com](mailto:mzettel@cresa.com)



**Jeff Sharpe**  
Advisor, Sales Representative  
647.988.1114  
[jeff.sharpe@cresa.com](mailto:jeff.sharpe@cresa.com)