



**Sublease Available**

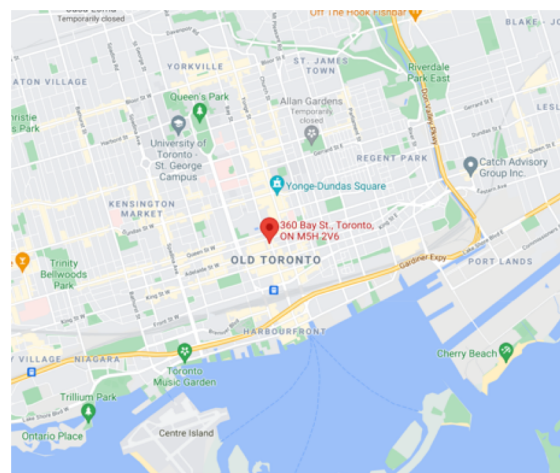
**360 Bay Street  
Toronto, ON**

## Space Profile

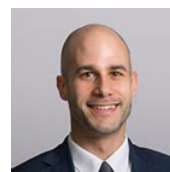
Space	7 <sup>th</sup> Floor
Total Rentable Area	5,556 SF
Net Rate	Call Agent to Discuss
Term	September 29, 2023

## Features

- Full floor opportunity
- 9 closed offices
- Open area for multiple workstations currently seats 12 – can seat more subject to size of workstations
- Large boardroom
- Two additional meeting rooms (including one off of elevator and main reception secured from remainder of space)
- Full kitchen with seating
- Large IT/Storage Room
- Furniture available
- Recently renovated building lobby, elevators, as well as the washrooms servicing the floor



**Jamie Grossman**  
Managing Principal  
416.862.2670  
jgrossman@cresa.com

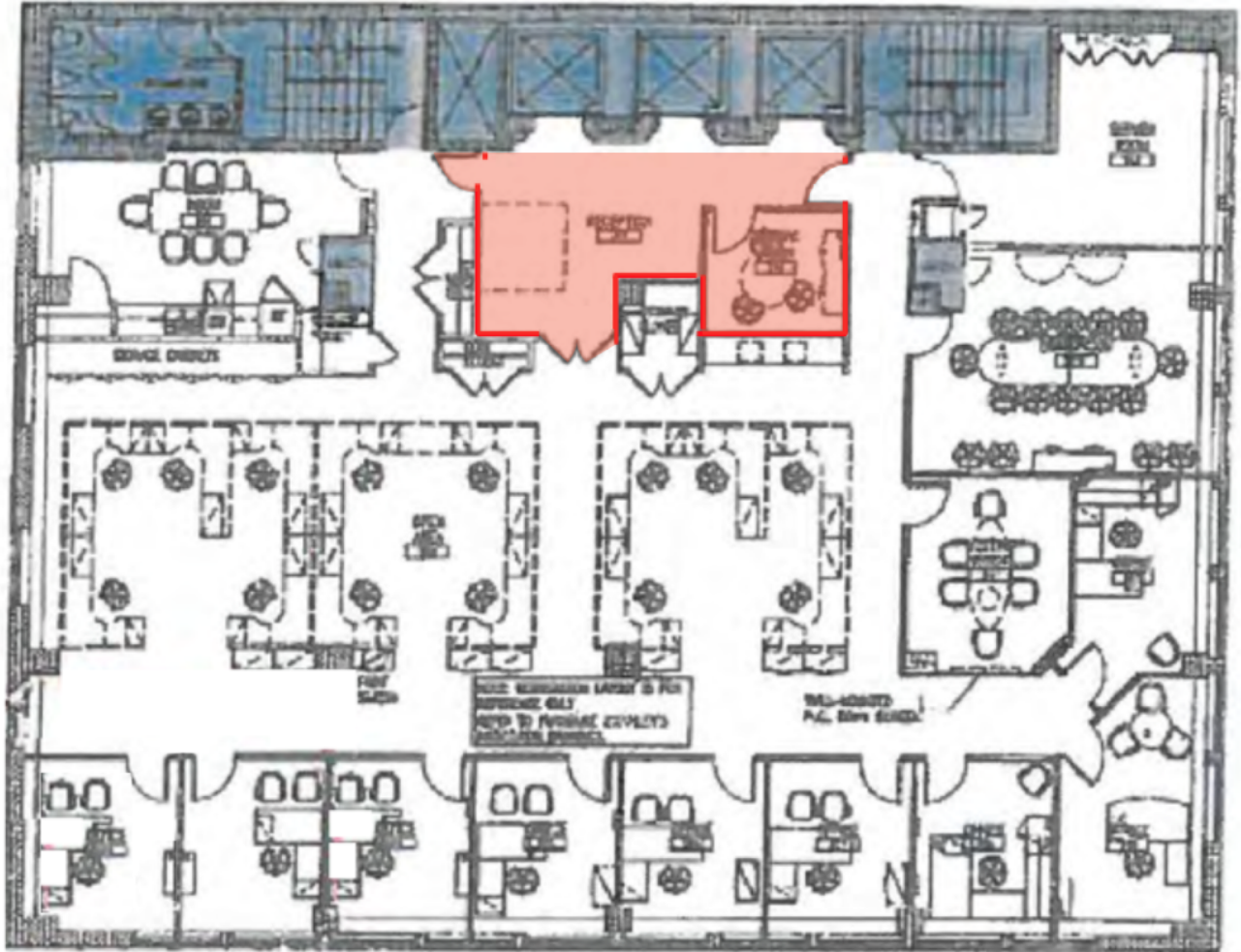


**Matthew Rosenberg**  
Vice President,  
Account Management  
416.862.2666  
mrosenberg@cresa.com

## For More Information

**Cresa Toronto Inc., Brokerage** - 170 University Ave, Suite 1100 - Toronto, ON - M5H 3B3 - [cresa.com/toronto](https://cresa.com/toronto)

Even though obtained from sources deemed reliable, no warranty or representation, express or implied, is made as to the accuracy of the information herein, and it is subject to errors, omissions, change of price, rental or other conditions, withdrawal without notice, and to any special listing conditions imposed by our principals.



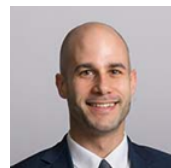
Main reception and small meeting room secured from remainder of premises by means of 3 separate card access entrances into the space

## For More Information

**Cresa Toronto Inc., Brokerage**  
170 University Ave, Suite 1100  
Toronto, ON - M5H 3B3  
[cresa.com/toronto](http://cresa.com/toronto)

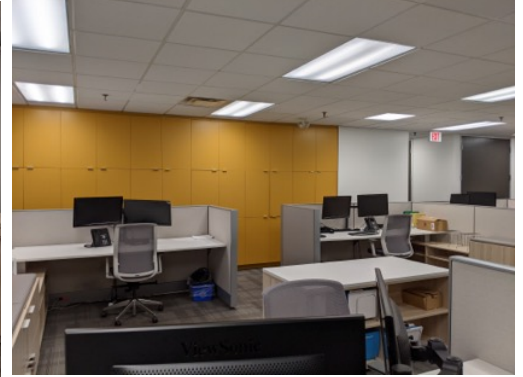
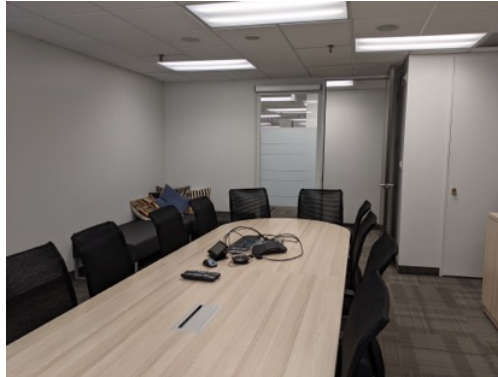


**Jamie Grossman**  
Managing Principal  
416.862.2670  
[jgrossman@cresa.com](mailto:jgrossman@cresa.com)



**Matthew Rosenberg**  
Vice President,  
Account Management  
416.862.2666  
[mrosenberg@cresa.com](mailto:mrosenberg@cresa.com)



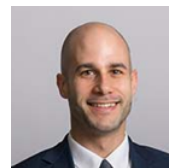


## For More Information

**Cresa Toronto Inc., Brokerage**  
170 University Ave, Suite 1100  
Toronto, ON - M5H 3B3  
[cresa.com/toronto](http://cresa.com/toronto)

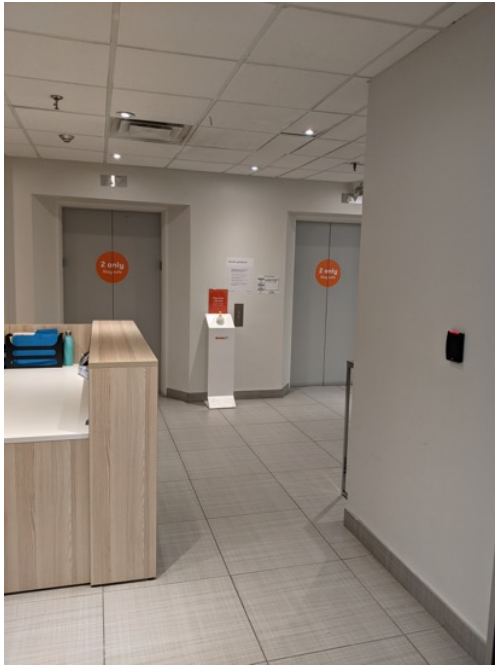


**Jamie Grossman**  
Managing Principal  
416.862.2670  
[jgrossman@cresa.com](mailto:jgrossman@cresa.com)



**Matthew Rosenberg**  
Vice President,  
Account Management  
416.862.2666  
[mrosenberg@cresa.com](mailto:mrosenberg@cresa.com)



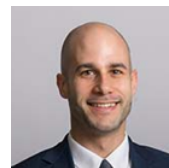


## For More Information

**Cresa Toronto Inc., Brokerage**  
170 University Ave, Suite 1100  
Toronto, ON - M5H 3B3  
[cresa.com/toronto](http://cresa.com/toronto)



**Jamie Grossman**  
Managing Principal  
416.862.2670  
[jgrossman@cresa.com](mailto:jgrossman@cresa.com)



**Matthew Rosenberg**  
Vice President,  
Account Management  
416.862.2666  
[mrosenberg@cresa.com](mailto:mrosenberg@cresa.com)