



Sublease Available

**36 Toronto Street
Toronto, ON**

Space Profile

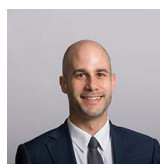
Premises	Part 12 th Floor
Total Rentable Area	8,908 SF
Net Rate	Please Contact Agent
Additional Rent	\$24.19 (2021 est.)
Term:	May 30 th , 2024
Available:	30 – 60 Days

Features

- Mix of open space, meetings rooms, closed offices and kitchenette
- Can be combined with contiguous space for total of approximately 17,800 SF, 20,100 SF or 29,021 SF
- Furniture available
- Landlord open to extension

For More Information

Cresa Toronto Inc., Brokerage
170 University Ave, Suite 1100
Toronto, ON
M5H 3B3
cresa.com/toronto



Matthew Rosenberg
Senior Advisor,
Sales Representative
416.862.2666
mrosenberg@cresa.com



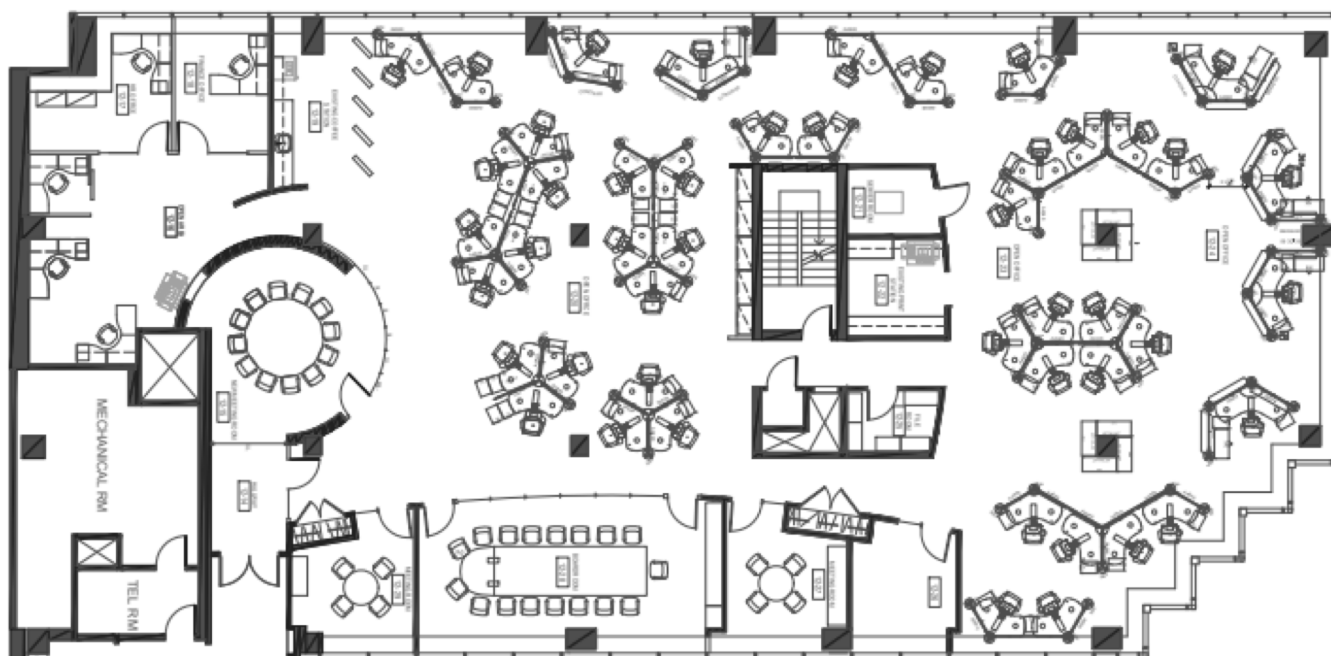
Jamie Grossman
Managing Principal
416.862.2670
jgrossman@cresa.com

Even though obtained from sources deemed reliable, no warranty or representation, express or implied, is made as to the accuracy of the information herein, and it is subject to errors, omissions, change of price, rental or other conditions, withdrawal without notice, and to any special listing conditions imposed by our principals.



**36 Toronto Street
Toronto, ON**

12th Floor



For More Information

Cresa Toronto Inc., Brokerage
170 University Ave, Suite 1100
Toronto, ON - M5H 3B3
cresa.com/toronto



Matthew Rosenberg
Senior Advisor,
Sales Representative
416.862.2666
mrosenberg@cresa.com



Jamie Grossman
Managing Principal
416.862.2670
jgrossman@cresa.com



**36 Toronto Street
Toronto, ON**

12th Floor



For More Information

Cresa Toronto Inc., Brokerage
170 University Ave, Suite 1100
Toronto, ON - M5H 3B3
cresa.com/toronto



Matthew Rosenberg
Senior Advisor,
Sales Representative
416.862.2666
mrosenberg@cresa.com



Jamie Grossman
Managing Principal
416.862.2670
jgrossman@cresa.com