



Sublease Available

36 Toronto Street
Toronto, ON

Space Profile

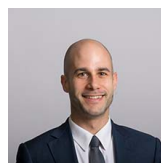
Premises	13 th Floor & Part 12 th
Total Rentable Area	20,113 SF
Net Rate	Please Contact Agent
Additional Rent	\$24.19 (2021 est.)
Term:	May 30 th , 2024
Available:	30 – 60 Days

Features

- Expandable to 29,021 SF and divisible to approximately 11,200 SF
- 12th and 13th floor interconnected by internal staircase
- Mix of meetings rooms, closed office, open space, main kitchen/lunchroom and kitchenettes
- Large employee lounge/interaction area
- Furniture available
- Lots of natural light
- Landlord open to extension

For More Information

Cresa Toronto Inc., Brokerage
170 University Ave, Suite 1100
Toronto, ON
M5H 3B3
cresa.com/toronto



Matthew Rosenberg
Senior Advisor,
Sales Representative
416.862.2666
mrosenberg@cresa.com



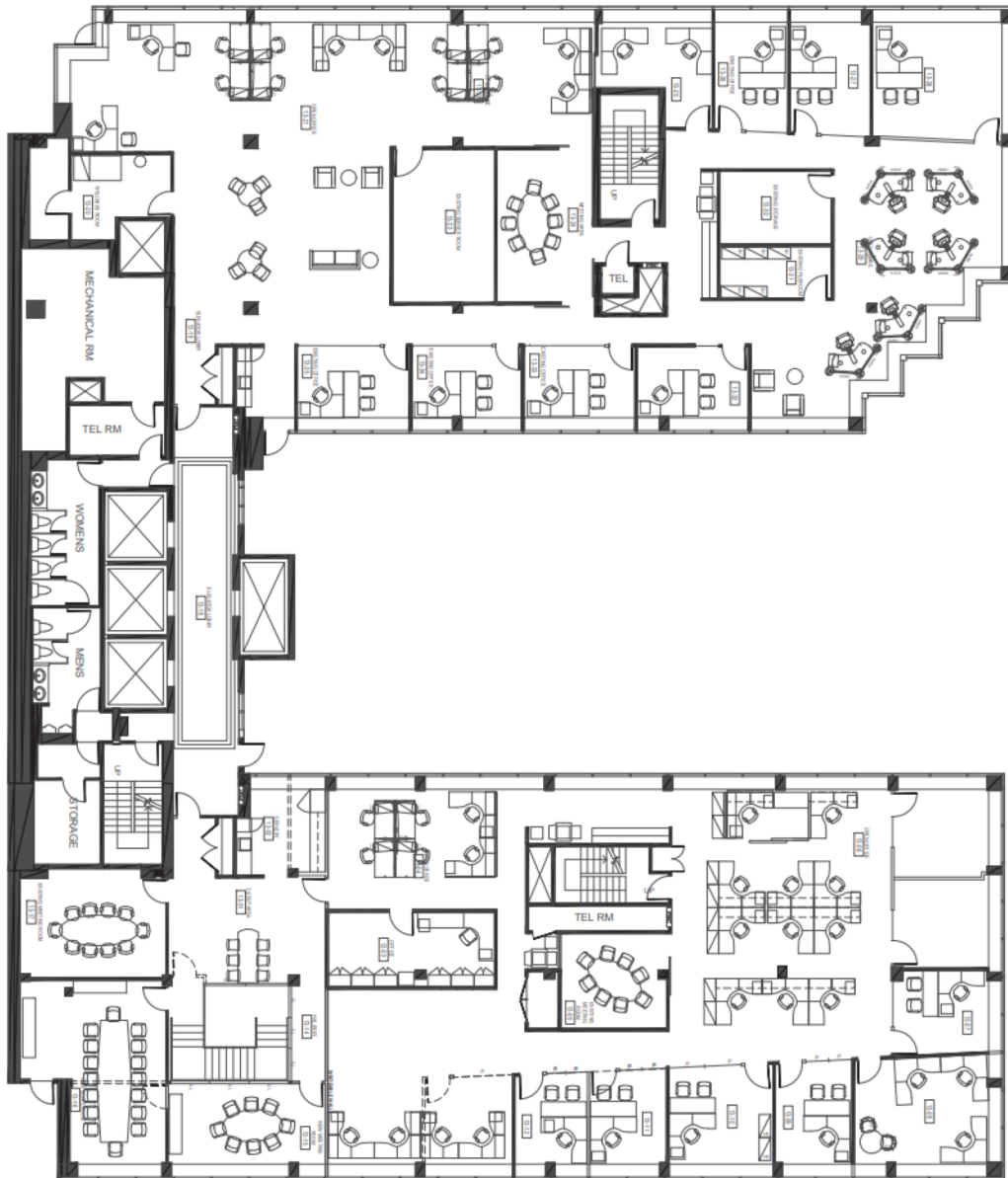
Jamie Grossman
Managing Principal
416.862.2670
jgrossman@cresa.com

Even though obtained from sources deemed reliable, no warranty or representation, express or implied, is made as to the accuracy of the information herein, and it is subject to errors, omissions, change of price, rental or other conditions, withdrawal without notice, and to any special listing conditions imposed by our principals.



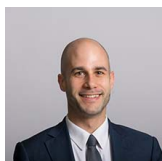
**36 Toronto Street
Toronto, ON**

13th Floor



For More Information

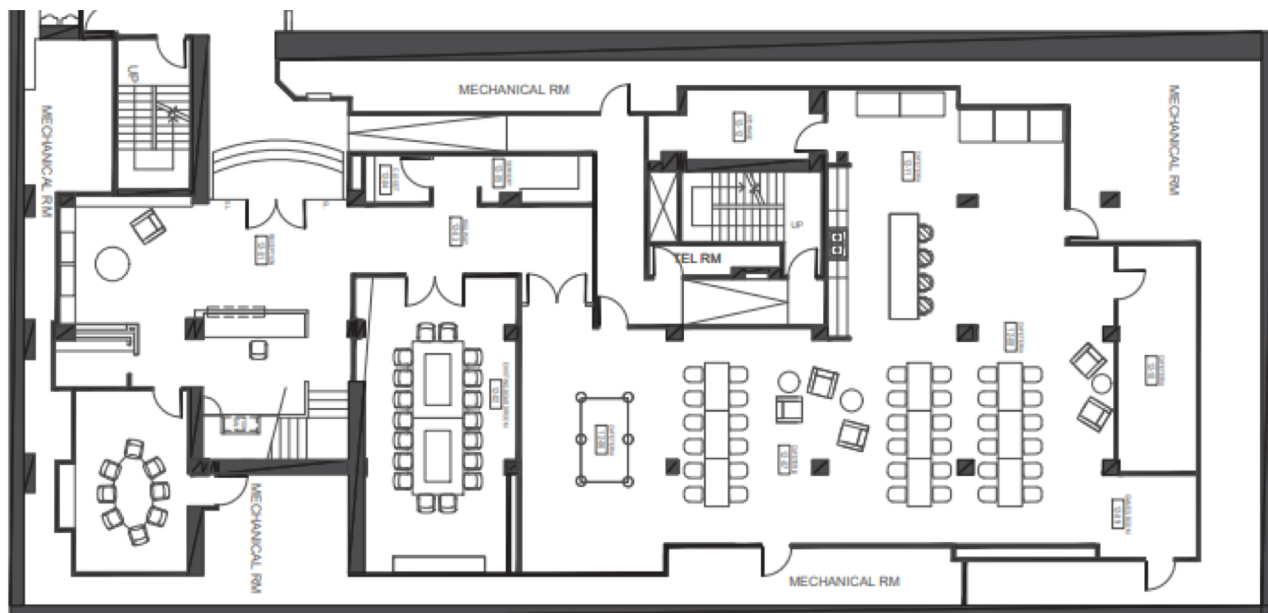
Cresa Toronto Inc., Brokerage
170 University Ave, Suite 1100
Toronto, ON - M5H 3B3
cresa.com/toronto



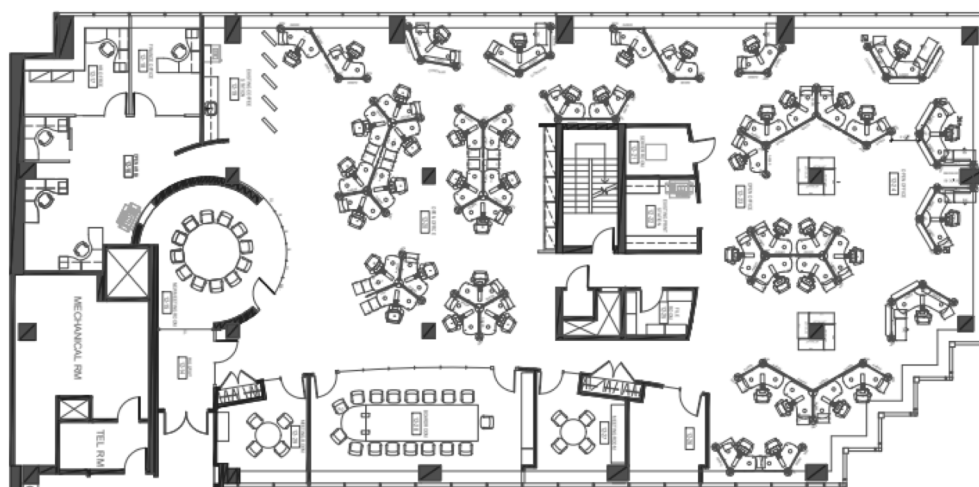
Matthew Rosenberg
Senior Advisor,
Sales Representative
416.862.2666
mrosenberg@cresa.com



Jamie Grossman
Managing Principal
416.862.2670
jgrossman@cresa.com



Also available – Additional 8,908 SF



For More Information

Cresa Toronto Inc., Brokerage
170 University Ave, Suite 1100
Toronto, ON - M5H 3B3
cresa.com/toronto



Matthew Rosenberg
Senior Advisor,
Sales Representative
416.862.2666
mrosenberg@cresa.com

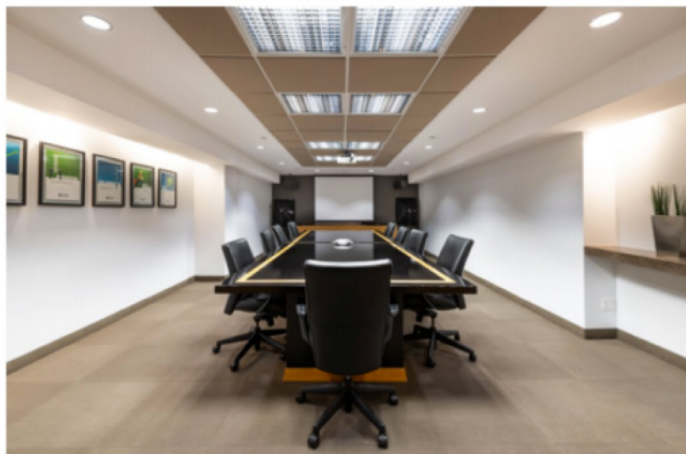


Jamie Grossman
Managing Principal
416.862.2670
jgrossman@cresa.com



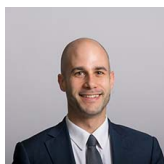
36 Toronto Street
Toronto, ON

12th Floor



For More Information

Cresa Toronto Inc., Brokerage
170 University Ave, Suite 1100
Toronto, ON - M5H 3B3
cresa.com/toronto



Matthew Rosenberg
Senior Advisor,
Sales Representative
416.862.2666
mrosenberg@cresa.com

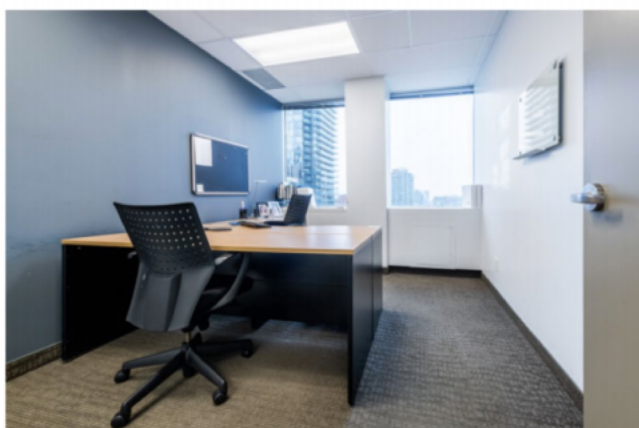


Jamie Grossman
Managing Principal
416.862.2670
jgrossman@cresa.com



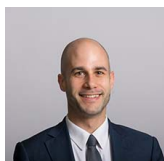
36 Toronto Street
Toronto, ON

13th Floor



For More Information

Cresa Toronto Inc., Brokerage
170 University Ave, Suite 1100
Toronto, ON - M5H 3B3
cresa.com/toronto



Matthew Rosenberg
Senior Advisor,
Sales Representative
416.862.2666
mrosenberg@cresa.com

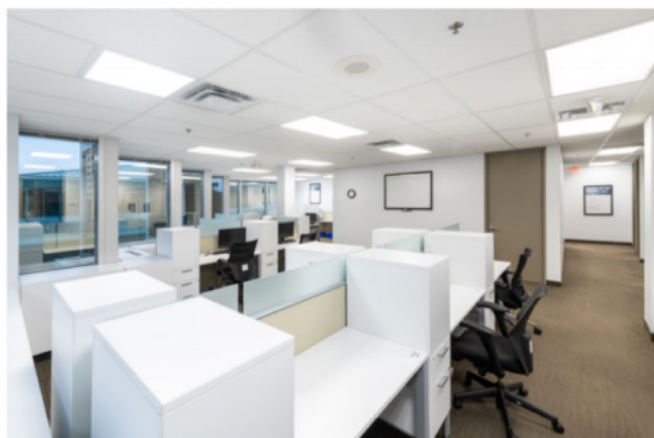


Jamie Grossman
Managing Principal
416.862.2670
jgrossman@cresa.com



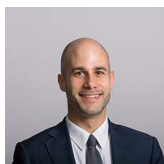
36 Toronto Street
Toronto, ON

13th Floor



For More Information

Cresa Toronto Inc., Brokerage
170 University Ave, Suite 1100
Toronto, ON - M5H 3B3
cresa.com/toronto



Matthew Rosenberg
Senior Advisor,
Sales Representative
416.862.2666
mrosenberg@cresa.com



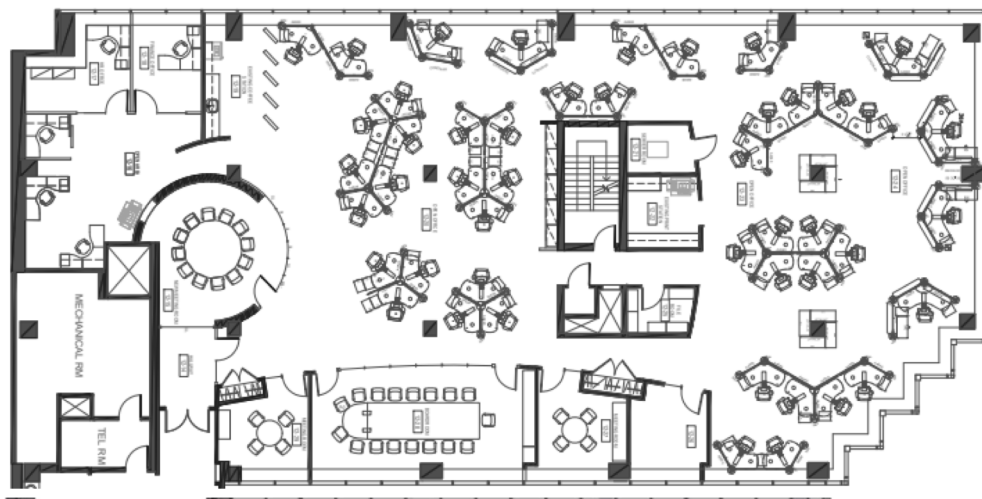
Jamie Grossman
Managing Principal
416.862.2670
jgrossman@cresa.com



**36 Toronto Street
Toronto, ON**

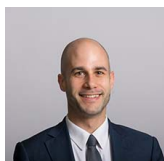
12th Floor

Also available – Additional 8,908 SF



For More Information

Cresa Toronto Inc., Brokerage
170 University Ave, Suite 1100
Toronto, ON - M5H 3B3
cresa.com/toronto



Matthew Rosenberg
Senior Advisor,
Sales Representative
416.862.2666
mrosenberg@cresa.com



Jamie Grossman
Managing Principal
416.862.2670
jgrossman@cresa.com