

Turnkey Character Sublease Downtown

Below market rates and ready for occupancy

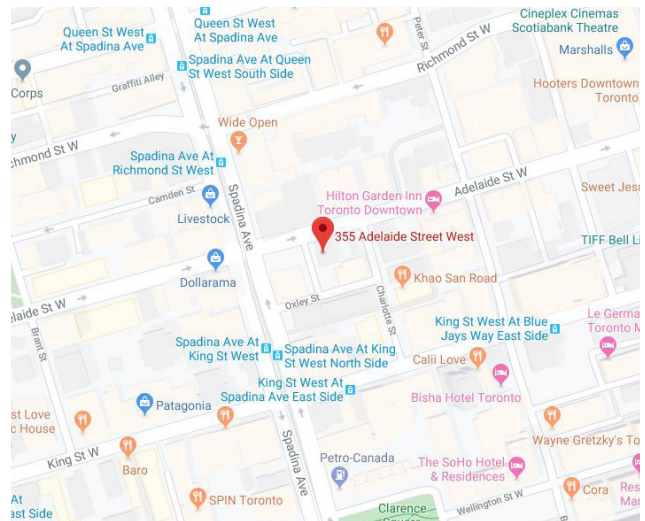
355 Adelaide St W
Toronto, ON

Space Profile

Premises	Suite 410
Total Rental Area	2,191 SF
Net Rate	Contact Agents
Availability	Immediate
Sublease Term	Until March 30, 2022

Features

- Classic brick & beam space with high ceilings, hardwood floors and exposed HVAC
- Built out with 2 offices/meeting rooms, kitchen, open space, and in-suite washroom
- Convenient located in close proximity to restaurants, TTC streetcar and downtown core
- On-site parking potentially available
- Furniture is available
- Landlord will consider extending the sublease term



For More Information

Cresa Toronto Inc, Brokerage
170 University Ave, Suite 1100
Toronto, ON
M5H 3B3
cresa.com/toronto

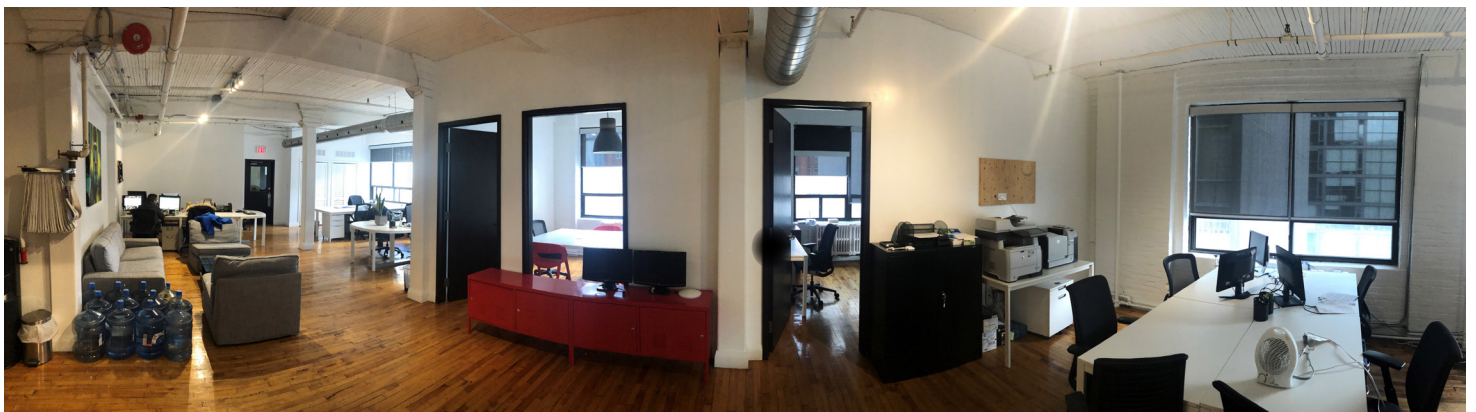
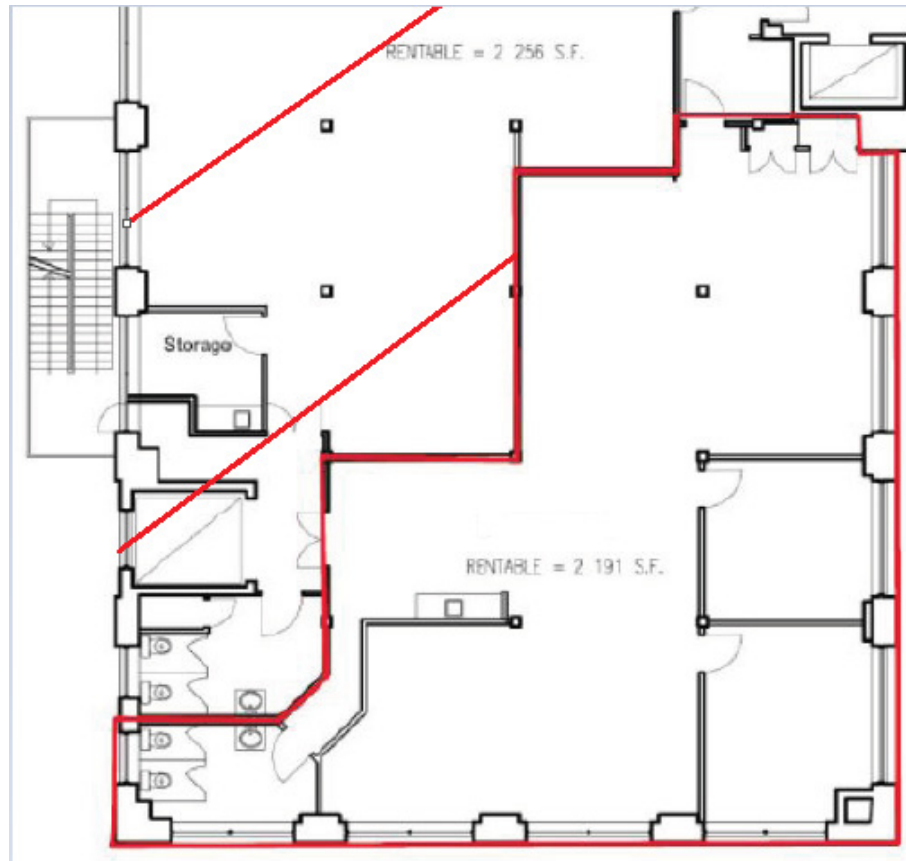


Mark Zettel MBA, CPA, CMA
Principal,
Sales Representative
416.862.8162
mzettel@cresa.com



Adam Raithby
Advisor,
Sales Representative
416.847.6200
araithby@cresa.com

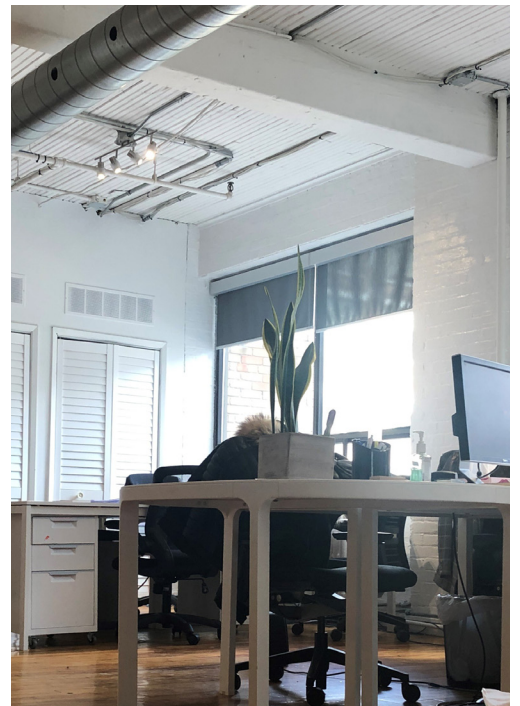
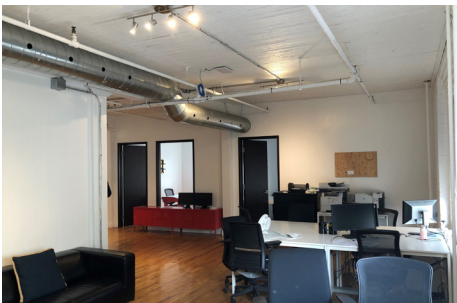
Floor Plan





355 Adelaide St W
Toronto, ON

2,191 SF



For More Information



Mark Zettel MBA, CPA, CMA
Principal,
Sales Representative
416.862.8162
mzettel@cresa.com



Adam Raithby
Advisor,
Sales Representative
416.847.6200
araithby@cresa.com