



Sublease Available

**317 Adelaide Street West
Toronto, ON**

Space Profile

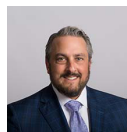
Premises	Suite 1005
Size	2,500 SF
Rental Rate	Please contact Agent
Availability	Immediate
Term	Until April 29, 2023

Features

- Move in ready
- South West corner of the 10th floor (top floor)
- Classic Brick & Beam space located in Downtown West
- Original (quiet) hardwood floors and high ceilings
- Natural light exposure
- Board room + 2 meeting rooms/offices + storage room
- Large open area
- New roof-top patio one floor above (wifi accessible)
- Close proximity to public transit and downtown core

For More Information

Cresa Toronto Inc., Brokerage
170 University Avenue
Suite 1100
Toronto, ON M5H 3B3
cresa.com/toronto



Mark Bleiwas
Principal, Sales Representative
Direct: 416.862.0707
Mobile: 416.953.7400
mbleiwas@cresa.com

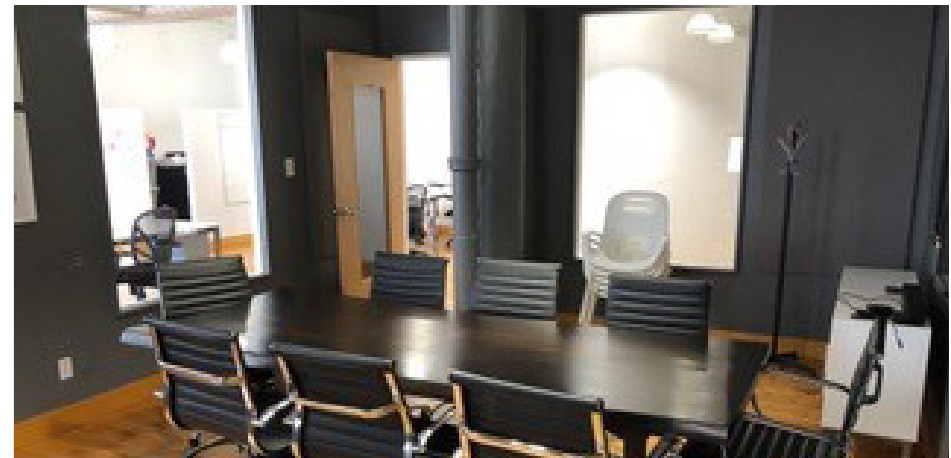
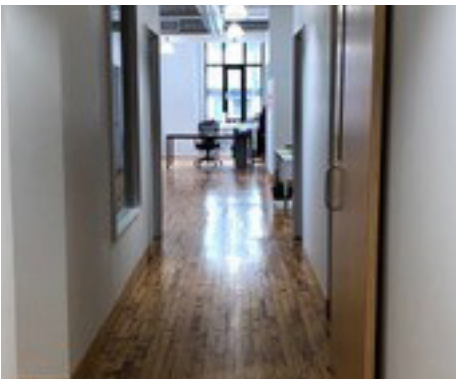
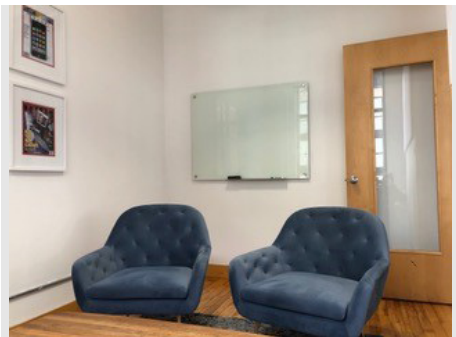


Christiaan de Wet
Senior Advisor, Sales Representative
Direct: 416.847.6227
Mobile: 647.549.7677
cdewet@cresa.com



317 Adelaide Street West
Toronto, ON

2,500 SF



For More Information

Mark Bleiwas

Principal, Sales Representative
Direct: 416.862.0707
Mobile: 416.953.7400
mbleiwas@cresa.com

Christiaan de Wet

Senior Advisor, Sales Representative
Direct: 416.847.6227
Mobile: 647.549.7677
cdewet@cresa.com