

Sublease Available

3 Church Street
Toronto, ON

Space Profile

Premises	Suite 500
Total Rentable Area	4,113 SF
Net Rate	Call Agent to Discuss
TMI	\$15.17 PSF (2020)
Available	Immediately
Sublease Term	September 29, 2025

Features

- Move-in-ready
- Classic Brick & Beam building located in Downtown East
- Great mix of generously-sized offices and open areas
- 6-8 person meeting room
- Furniture can be made available
- St. Lawrence Market location is in close proximity to public transit and downtown core

For More Information

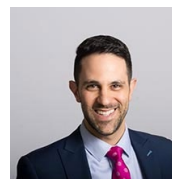
Cresa Toronto Inc., Brokerage
170 University Ave, Suite 1100
Toronto, ON - M5H 3B3
cresa.com/toronto



[Click Here
for
Virtual Tour](#)

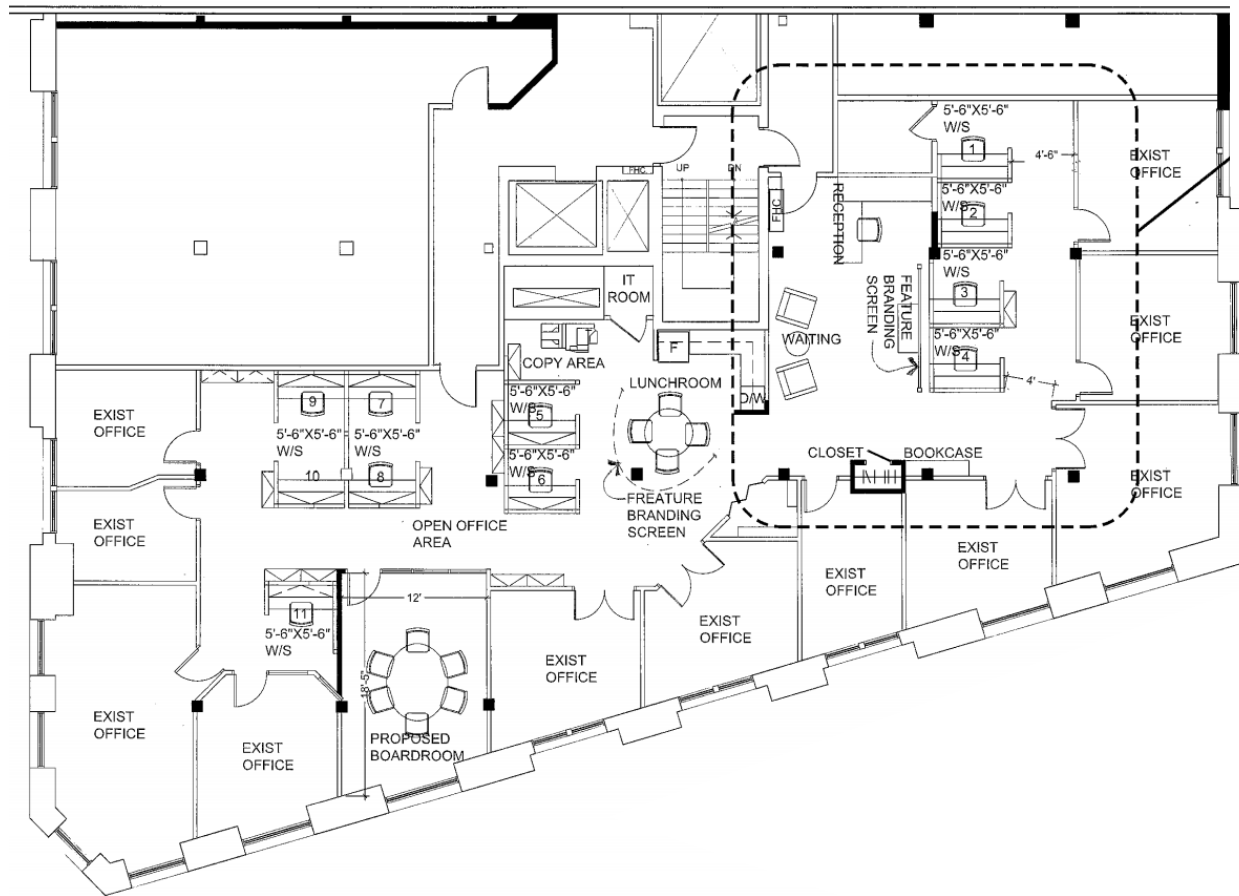


Mark Zettel MBA, CPA, CMA
Principal, Sales Representative
647.409.5212
mzettel@cresa.com



Mark Titleman
Vice President,
Sales Representative
647.990.8413
mtitleman@cresa.com

*Floor plan not exactly as-built.

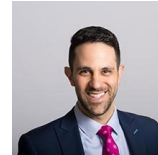


For More Information

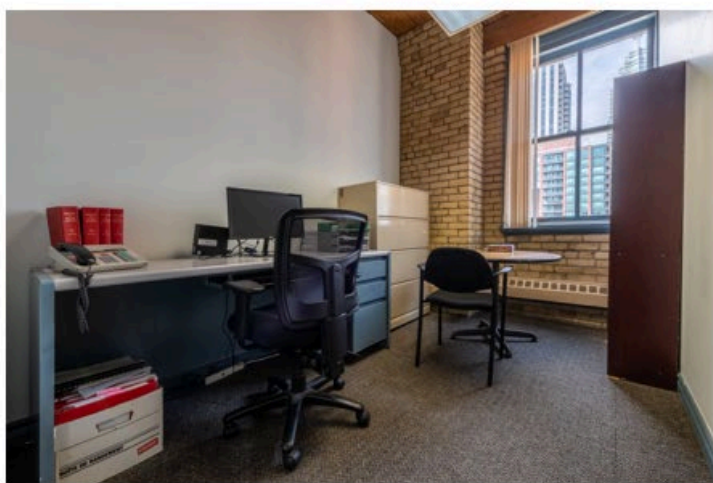
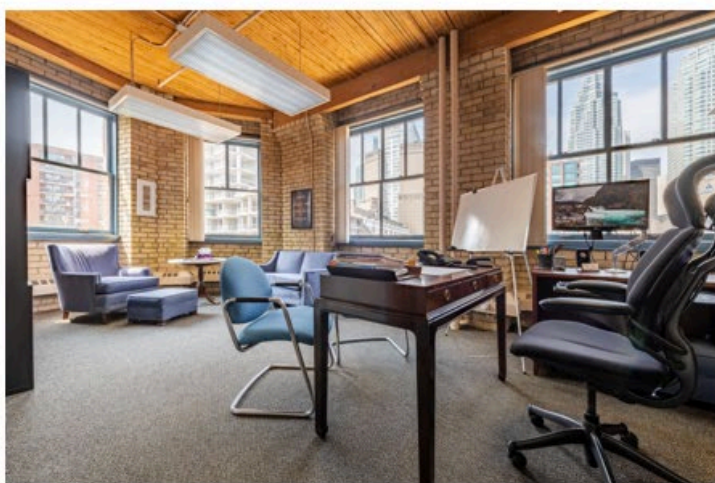
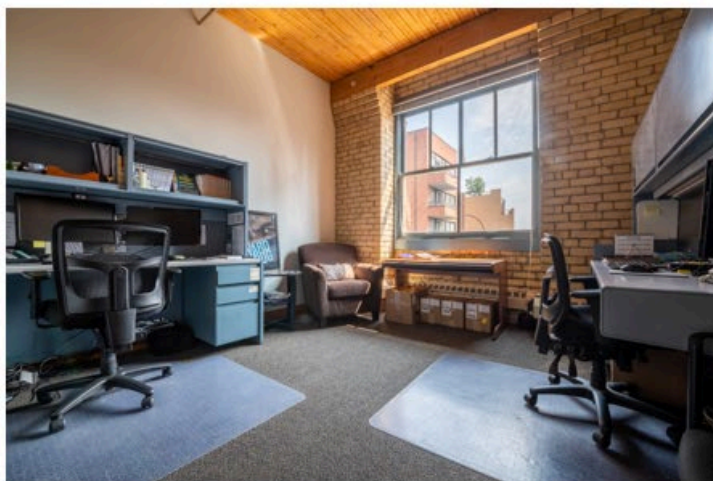
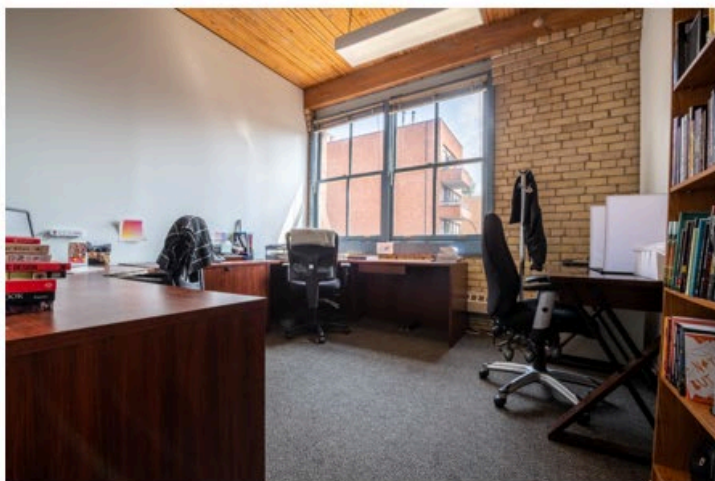
Cresa Toronto Inc., Brokerage
170 University Ave, Suite 1100
Toronto, ON M5H 3B3
cresa.com/toronto



Mark Zettel MBA, CPA, CMA
Principal,
Sales Representative
647.409.5212
mzettel@cresa.com



Mark Tittleman
Vice President,
Sales Representative
647.990.8413
mtittleman@cresa.com

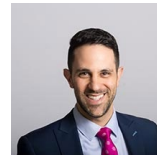


For More Information

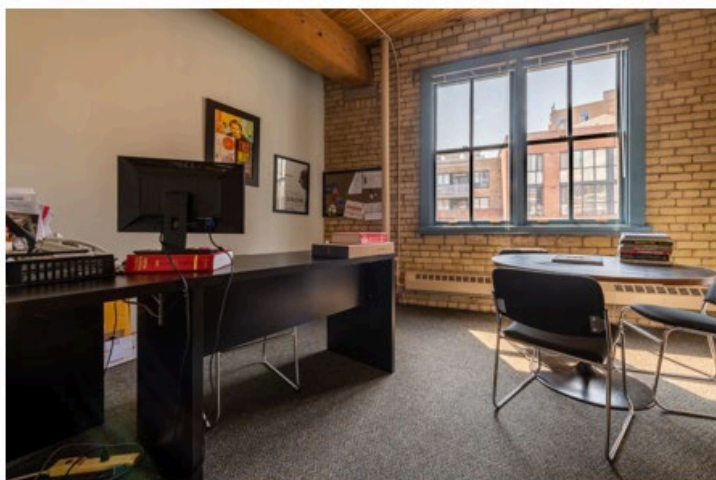
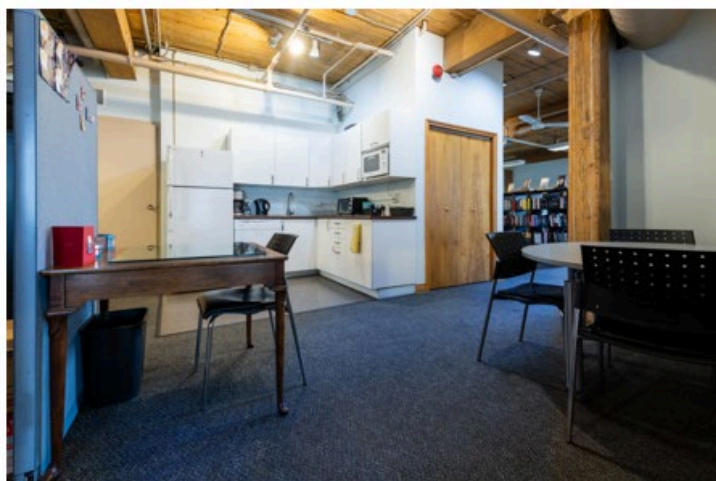
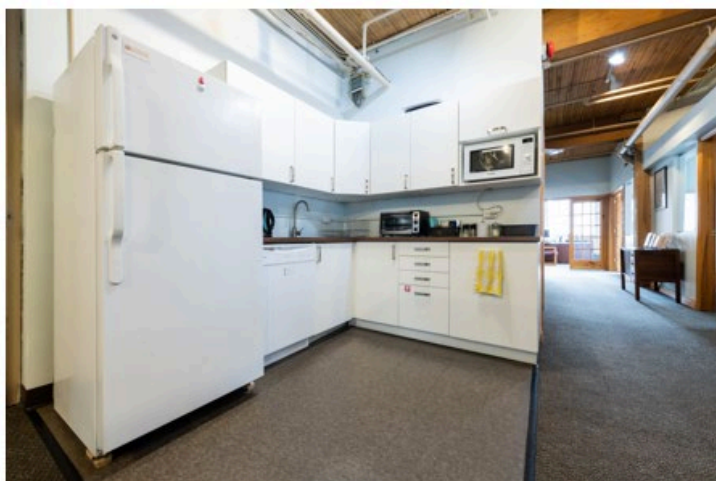
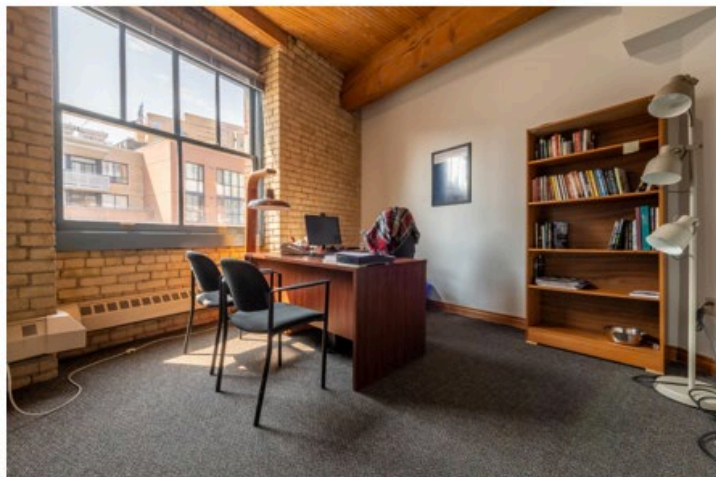
Cresa Toronto Inc., Brokerage
170 University Ave, Suite 1100
Toronto, ON M5H 3B3
cresa.com/toronto



Mark Zettel MBA, CPA, CMA
Principal,
Sales Representative
647.409.5212
mzettel@cresa.com



Mark Tittleman
Vice President,
Sales Representative
647.990.8413
mtittleman@cresa.com

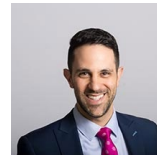


For More Information

Cresa Toronto Inc., Brokerage
170 University Ave, Suite 1100
Toronto, ON M5H 3B3
cresa.com/toronto



Mark Zettel MBA, CPA, CMA
Principal,
Sales Representative
647.409.5212
mzettel@cresa.com



Mark Tittleman
Vice President,
Sales Representative
647.990.8413
mtittleman@cresa.com