

## Built Out Space for Professional Groups or Non-Profits

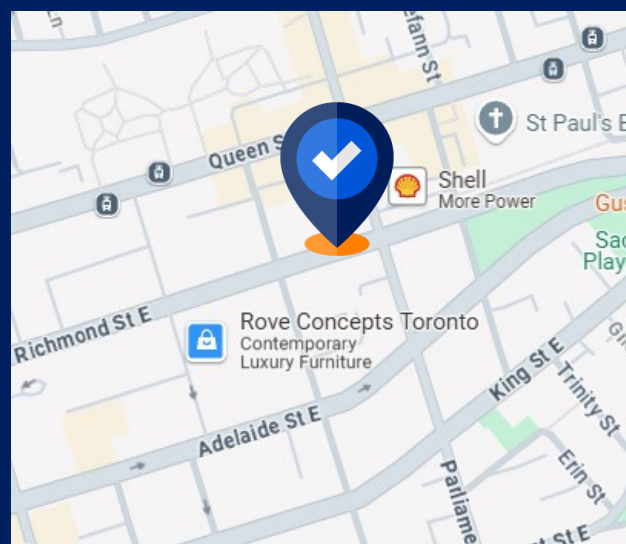
### Downtown East Sublease - Full Floor / Shared Space Options

#### Space Profile

|                            |                                |
|----------------------------|--------------------------------|
| <b>Premises</b>            | Full 2nd Floor                 |
| <b>Total Rentable Area</b> | 4,155 SF                       |
| <b>Net Rent</b>            | Contact Agent                  |
| <b>Additional Rent</b>     | \$26.24 psf (2026 est.)        |
| <b>Available</b>           | Immediately                    |
| <b>Term</b>                | Flexible – Up to July 31, 2035 |

#### Features

- Full floor opportunity, built out with a heavy compliment of private workspace
- Stair access only with private door to second floor suite
- Large reception area, 1 executive office, 10 private offices, large boardroom, and kitchen area
- Private washrooms located within the premises
- Steps between the King and Queen TTC streetcar/bus routes, and future Moss Park Ontario line station
- Nearby proximity to both the Gardiner Expy and DVP highways
- Comes with 4 dedicated on-site parking spaces
- Shared space or private office rentals available on flexible basis



**Jeff Good**  
Principal,  
Sales Representative  
416. 807.8200  
jgood@cresa.com

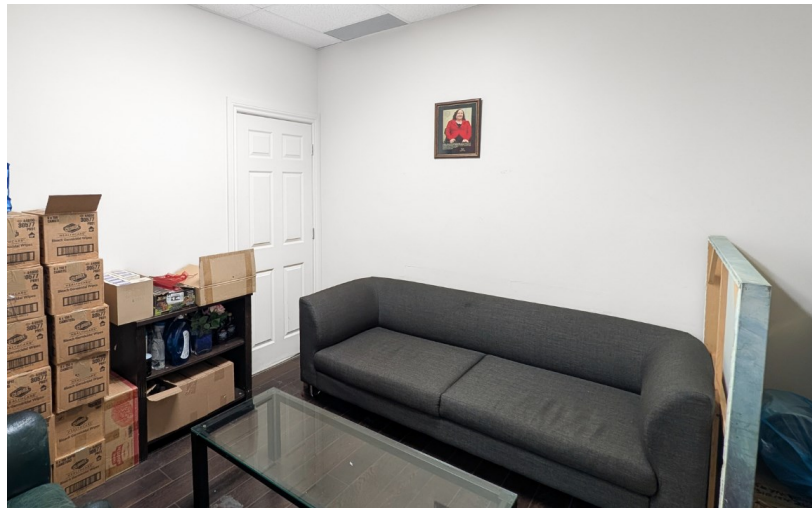


**Adam Raithby**  
Principal,  
Sales Representative  
416.707.0644  
araithby@cresa.com

VIEW THE **360°**  
VIRTUAL TOUR



# 526 Richmond Street East - Toronto, ON



cresa



**Jeff Good**

Principal, Sales Representative  
416. 807.8200  
jgood@cresa.com



**Adam Raithby**

Principal, Sales Representative  
416.707.0644  
araithby@cresa.com

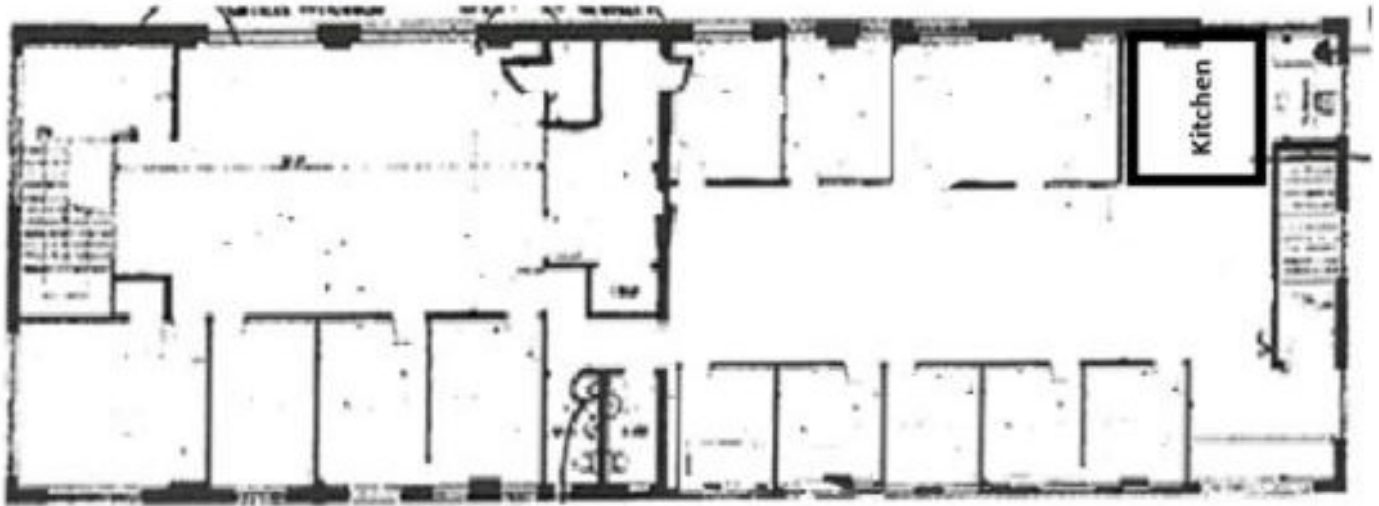
For More Information

Cresa Toronto Inc., Brokerage - 200 Wellington Street West, Suite 600 - Toronto, ON - M5V 3C7 - [cresa.com/toronto](http://cresa.com/toronto)



# 526 Richmond Street East - Toronto, ON

VIEW THE  
VIRTUAL TOUR **360**



cresa



**Jeff Good**

Principal, Sales Representative  
416. 807.8200  
jgood@cresa.com



**Adam Raithby**

Principal, Sales Representative  
416.707.0644  
araithby@cresa.com

For More Information

Cresa Toronto Inc., Brokerage - 200 Wellington Street West, Suite 600 - Toronto, ON - M5V 3C7 - [cresa.com/toronto](http://cresa.com/toronto)