

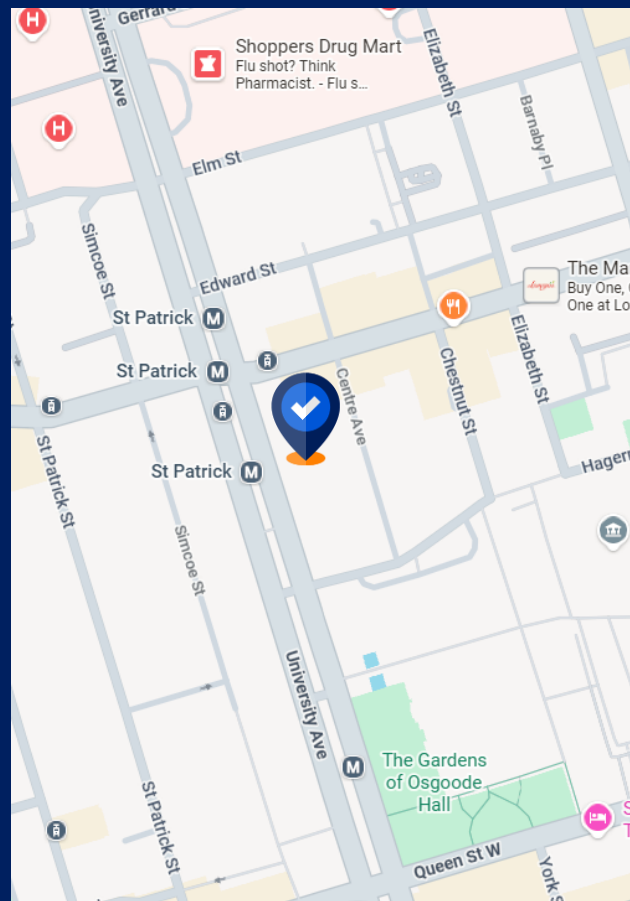
# Sublease Available

## Space Profile

<b>Premises</b>	Suite 2110
<b>Total Rentable Area</b>	6,260 SF Consider Demising to Approximately 4,460 SF
<b>Net Rent</b>	Contact Agent
<b>Additional Rent</b>	\$22.00 (2026 est)
<b>Term</b>	March 31, 2032
<b>Availability</b>	60 Days

## Features

- Bright side-core space with lots of windows
- Efficient layout with good mix of open and office
- Reception area, spacious kitchenette, boardroom, and breakout rooms



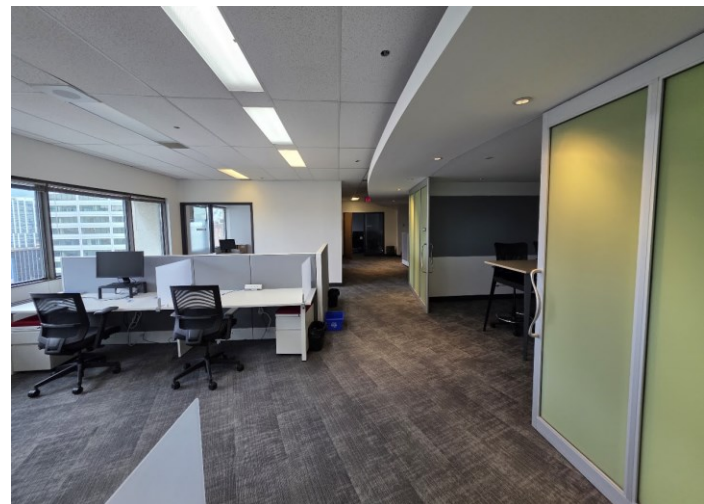
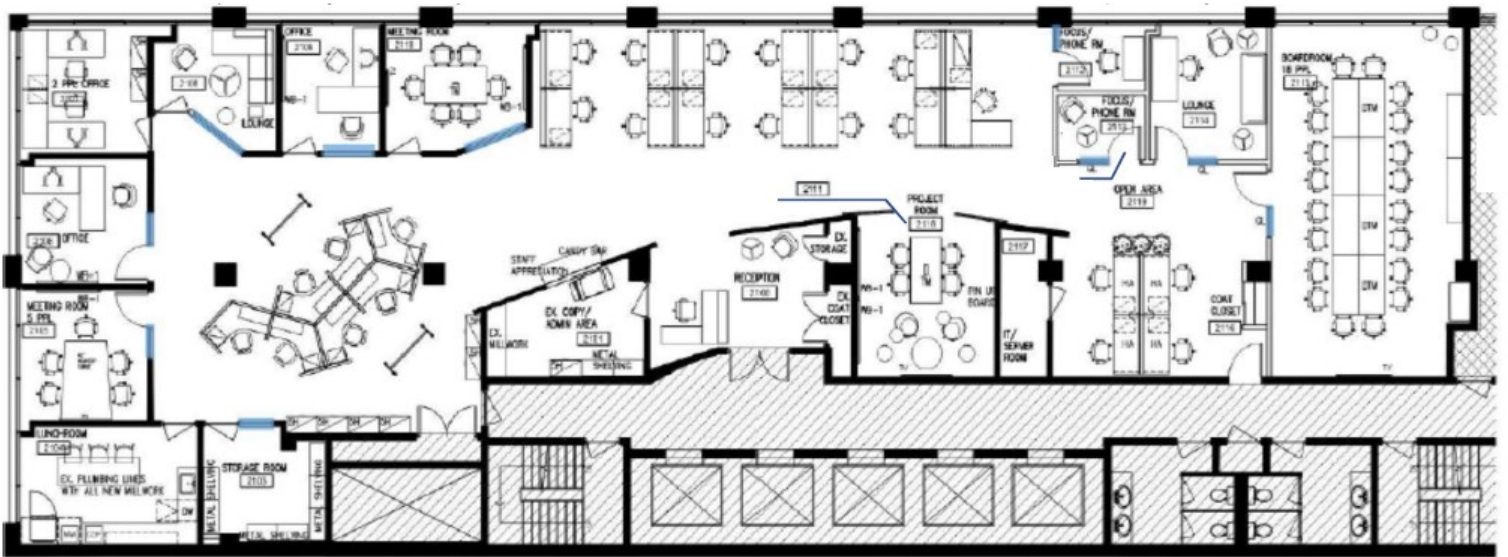
**Jamie Grossman**  
Principal,  
Broker  
416.402.1430  
jgrossman@cresa.com



**Jeff Good**  
Principal,  
Sales Representative  
416.807.8200  
jgood@cresa.com

Even though obtained from sources deemed reliable, no warranty or representation, express or implied, is made as to the accuracy of the information herein, and it is subject to errors, omissions, change of price, rental or other conditions, withdrawal without notice, and to any special listing conditions imposed by our principals.

# 439 University Avenue - Toronto, ON



**Jamie Grossman**  
Principal, Broker  
416.402.1430  
jgrossman@cresa.com



**Jeff Good**  
Principal,  
Sales Representative  
416.807.8200  
jgood@cresa.com

**cresa**