



Built Out Professional Office

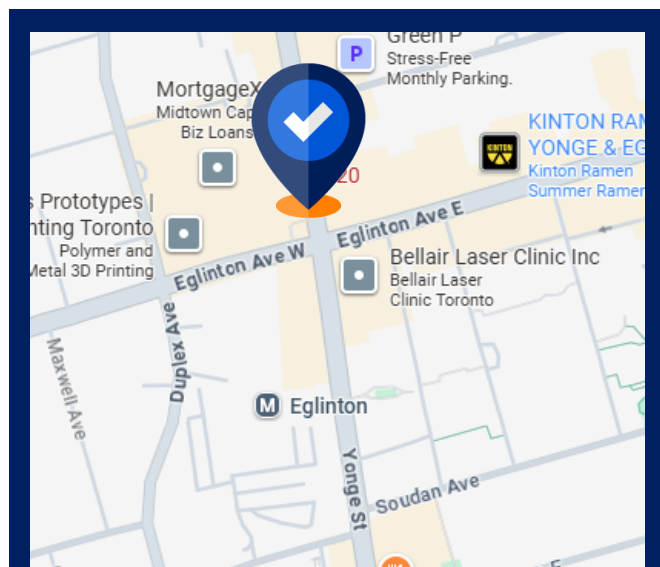
Midtown corner unit with great city views

Space Profile

Premises	Suite 1902
Total Rentable Area	2,737 SF
Net Rent	Contact Agent
Estimated Additional Rent	\$30.29 PSF + Utilities
Available	Immediately
Term	August 30, 2027

Features

- 3 standard private offices, 2 executive sized offices
- 10-person meeting room
- Galley style kitchenette
- Open reception and collaboration area, which could be densified for bench seating
- Workstations and furniture available
- Corner unit with great south and east facing views
- Building complex has a new food hall, rooftop patio, underground parking, bicycle storage and direct access to TTC Eglinton Station/ Crosstown LRT



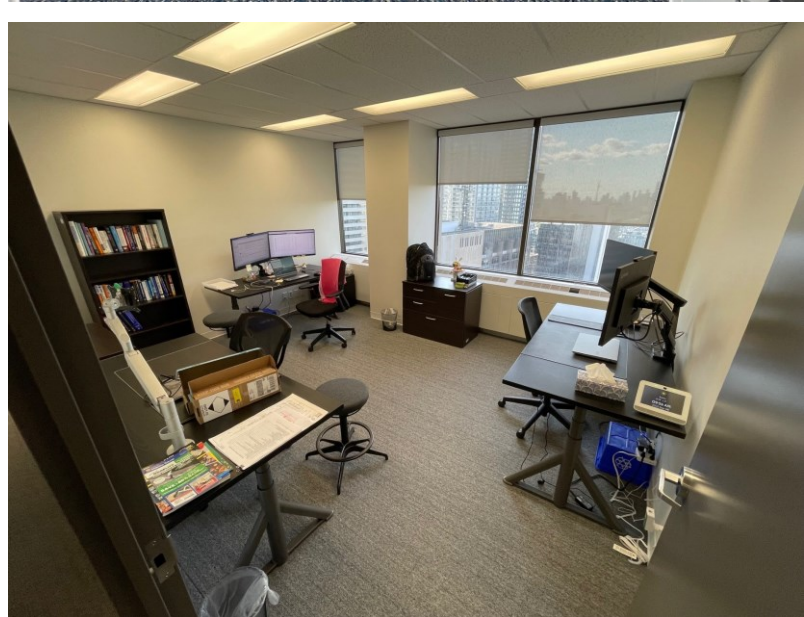
Oscar Brown
 Advisor, Sales Representative
 416.315.8532
 obrown@cresa.com



Adam Raithby
 Vice President,
 Sales Representative
 416.707.0644
 arraithby@cresa.com

Even though obtained from sources deemed reliable, no warranty or representation, express or implied, is made as to the accuracy of the information herein, and it is subject to errors, omissions, change of price, rental or other conditions, withdrawal without notice, and to any special listing conditions imposed by our principals.

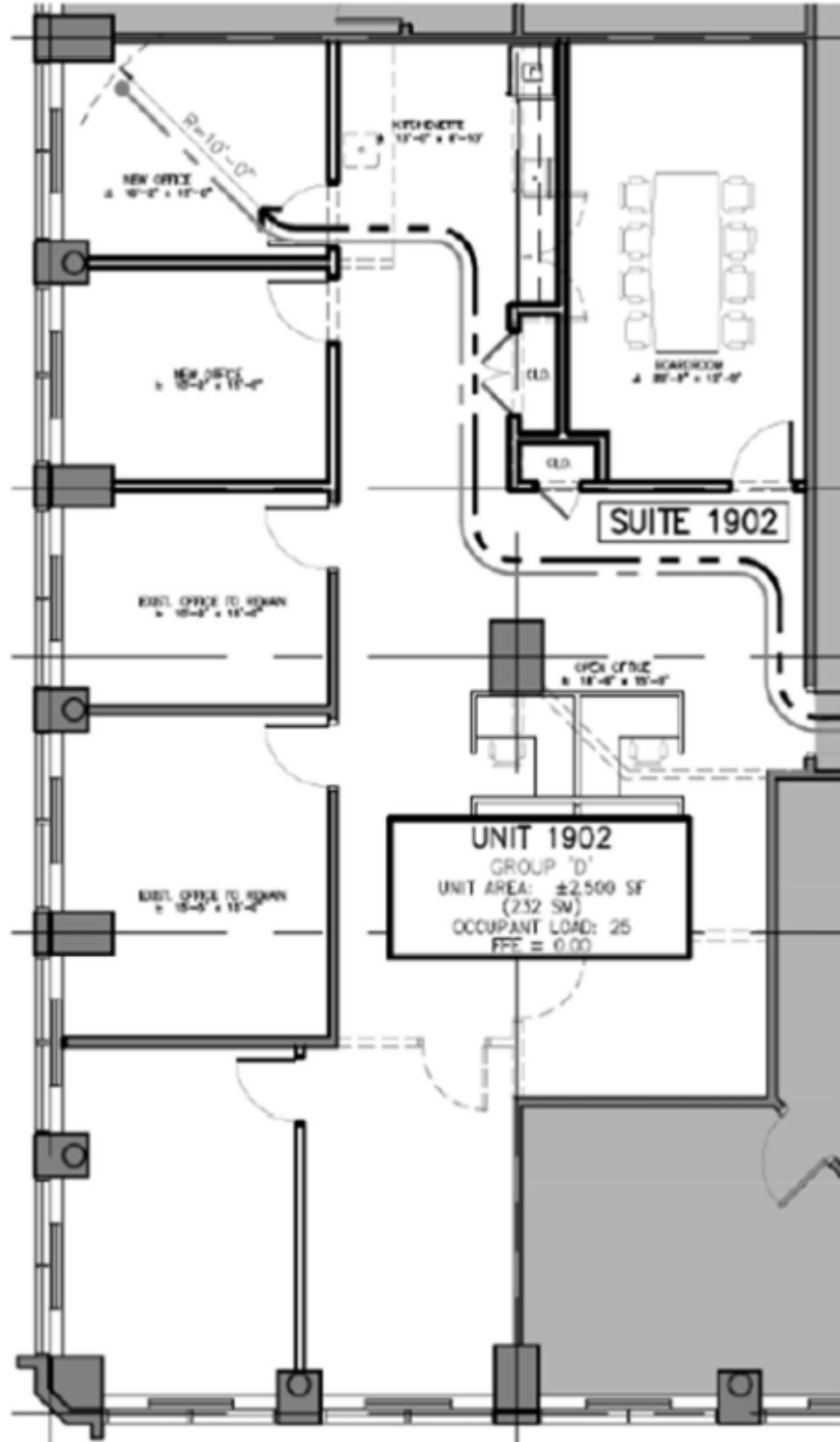
20 Eglinton Ave West - Toronto, ON



Adam Raithby
Vice President, Sales Representative
416.707.0644
araitby@cresa.com



Oscar Brown
Advisor, Sales Representative
416.315.8532
obrown@cresa.com



Adam Raithby
Vice President, Sales Representative
416.707.0644
araitby@cresa.com



Oscar Brown
Advisor, Sales Representative
416.315.8532
obrown@cresa.com