



Sublease Available

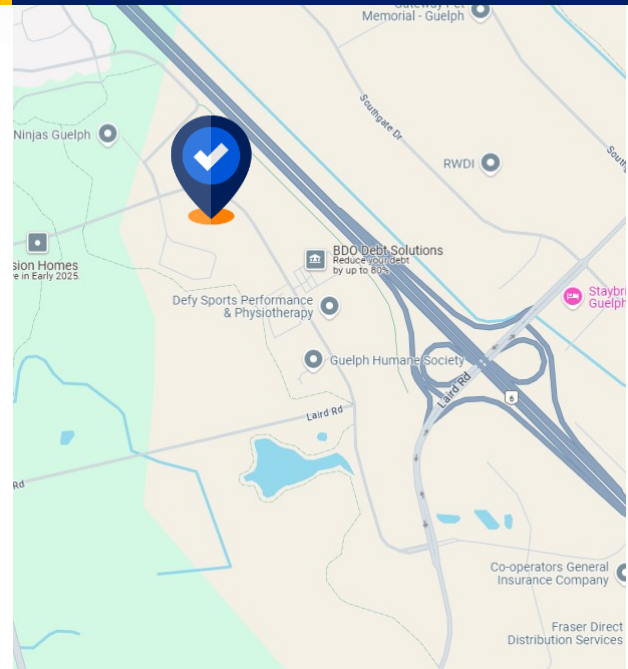
**350 Hanlon Creek Blvd,
Guelph, ON
Units 1-5**

Space Profile

Premises	Units 1-5
Total Rentable Area	40,561 SF
Net Rent	Contact Agent
Additional Rent	\$5.25
Availability	Immediate
Term	Feb 27, 2033

Features

- Modern Distribution facility built in 2022
- Efficient layout
- 28' clear
- 5 truck level & 5 Drive in doors
- 1,160 sf of office
- Racking can be made available



Andrew Chapman
Principal,
Sales Representative
416.862.0659
aichapman@cresa.com



Mark Skynner
Principal,
Sales Representative
416.616.9060
mskynner@cresa.com

Even though obtained from sources deemed reliable, no warranty or representation, express or implied, is made as to the accuracy of the information herein, and it is subject to errors, omissions, change of price, rental or other conditions, withdrawal without notice, and to any special listing conditions imposed by our principals.

350 Hanlon Creek Blvd, Guelph, ON - Units 1-5



Andrew Chapman
Principal,
Sales Representative
416.862.0659
aichapman@cresa.com



Mark Skyner
Principal,
Sales Representative
416.616.9060
mskyner@cresa.com

350 Hanlon Creek Blvd, Guelph, ON - Units 1-5

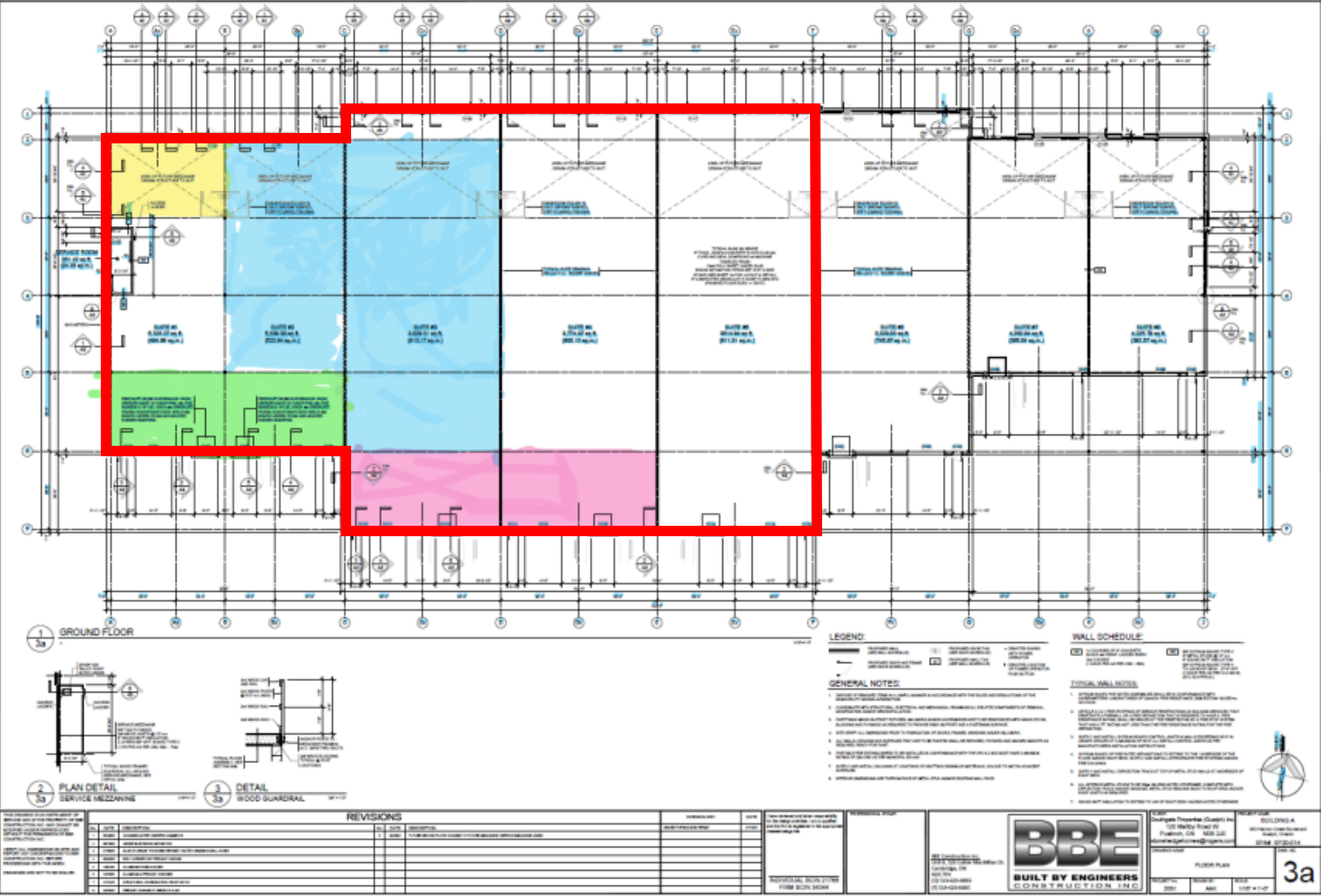


Andrew Chapman
Principal,
Sales Representative
416.862.0659
aichapman@cresa.com



Mark Skyner
Principal,
Sales Representative
416.616.9060
mskyner@cresa.com

FACILITY FLOORPLAN



X:\2051 - Hanlon Creek Blvd, Guelph - Building A\4 Drawings\2051 Building A Plans.dwg, 2/26/2021 9:59:01 AM



Andrew Chapman
Principal,
Sales Representative
416.862.0659
aichapman@cresa.com



Mark Skynner
Principal,
Sales Representative
416.616.9060
mskynner@cresa.com