

# Sublease Available

## Fully Built Out & Furnished

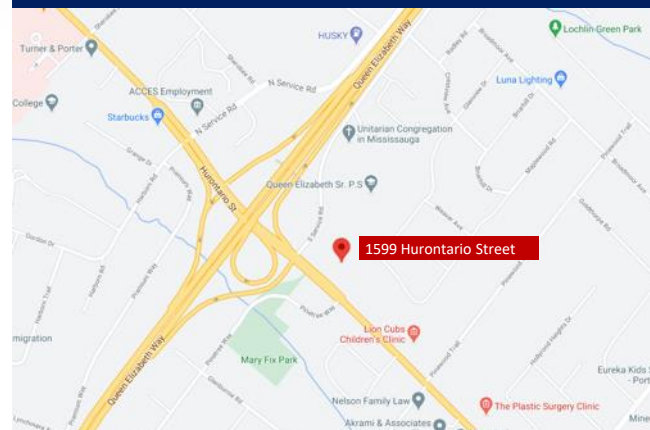
### Space Profile

<b>Premises</b>	Suite 201
<b>Total Rentable Area</b>	7,250 SF
<b>Net Rate</b>	Call Agent to Discuss
<b>Additional Rent</b>	\$14.78 PSF (2024)
<b>Availability</b>	30 Days
<b>Term</b>	September 30, 2027

### Features

- West facing exposure
- Space is built-out with reception area, boardroom, mix of private offices and open workstations, kitchen and open lounge area
- Furniture is available
- 22 Underground Parking Spaces; 4 Surface Parking Spaces
- Excellent access to QEW
- Bus connections to Port Credit GO Station and Square One

1599 Hurontario Street,  
Mississauga, ON



VIEW THE **360°**  
VIRTUAL TOUR



**Jeff Good**  
Sr. Vice President,  
Sales Representative  
416.807.8200  
jgood@cresa.com



**Barbara Wright**  
Principal,  
Sales Representative  
416.606.0533  
bwright@cresa.com

Even though obtained from sources deemed reliable, no warranty or representation, express or implied, is made as to the accuracy of the information herein, and it is subject to errors, omissions, change of price, rental or other conditions, withdrawal without notice, and to any special listing conditions imposed by our principals.





**Jeff Good**  
Sr. Vice President, Sales Representative  
416.807.8200  
jgood@cresa.com



**Barbara Wright**  
Principal, Sales Representative  
416.606.0533  
bwright@cresa.com

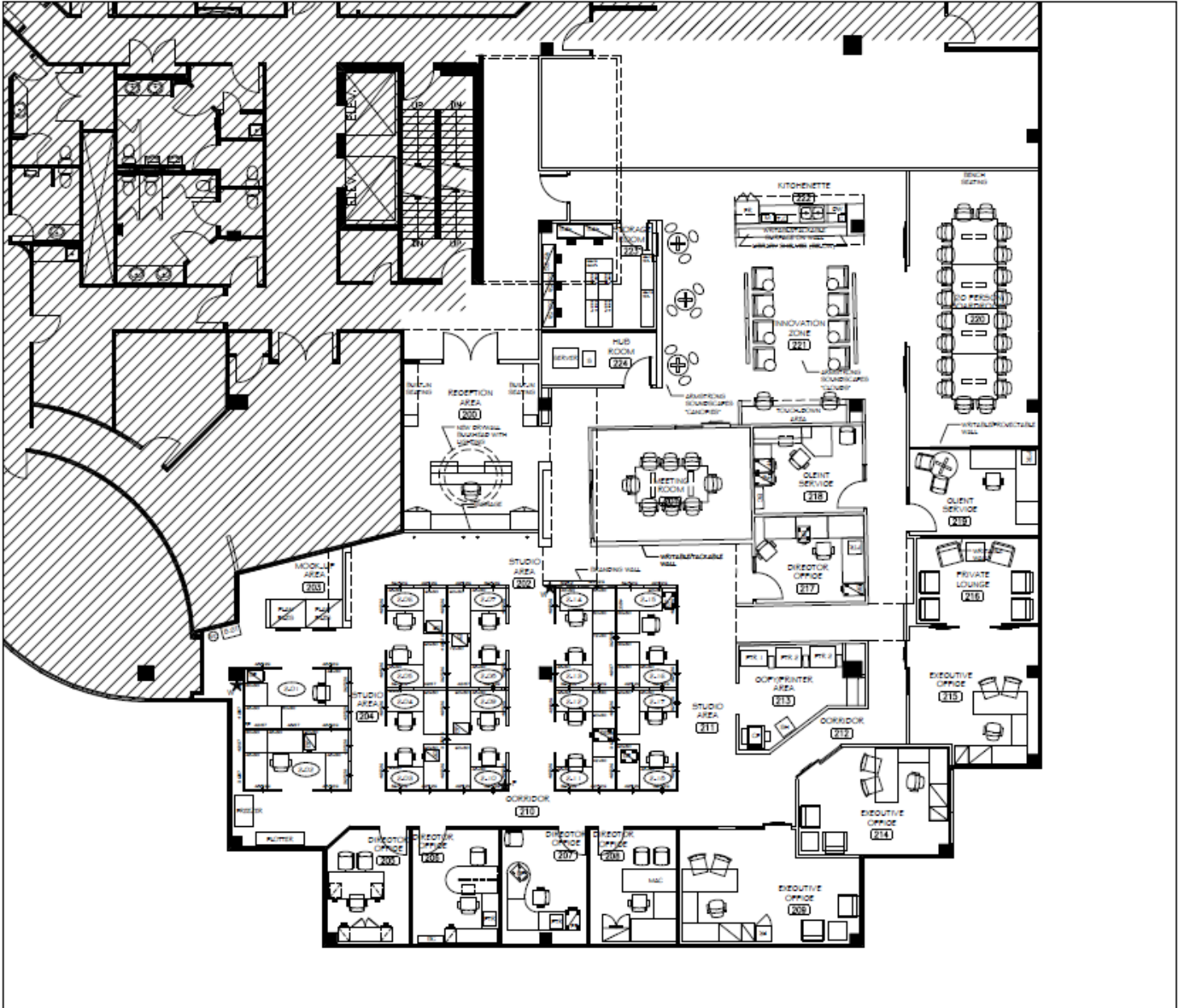




**Jeff Good**  
Sr. Vice President, Sales Representative  
416.807.8200  
jgood@cresa.com



**Barbara Wright**  
Principal, Sales Representative  
416.606.0533  
bwright@cresa.com



**Jeff Good**  
Sr. Vice President, Sales Representative  
416.807.8200  
jgood@cresa.com



**Barbara Wright**  
Principal, Sales Representative  
416.606.0533  
bwright@cresa.com