

Sublease Available

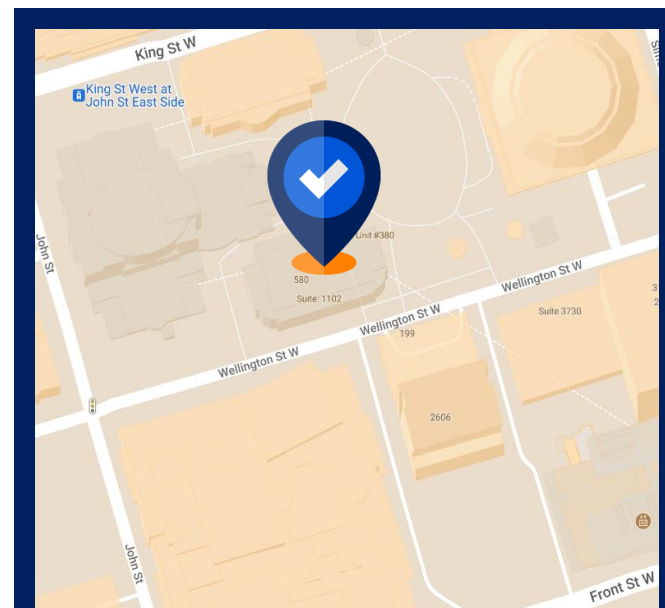
200 Wellington Street West, Toronto ON

Space Profile

Premises	Partial 2nd floor
Total Rentable Area	3,695 SF (approx.)
Net Rate	Please Contact Agent
Additional Rent	\$31.87 (2023 est.)
Term:	Flexible, up to June 29, 2029
Available:	60-90 Days

Features

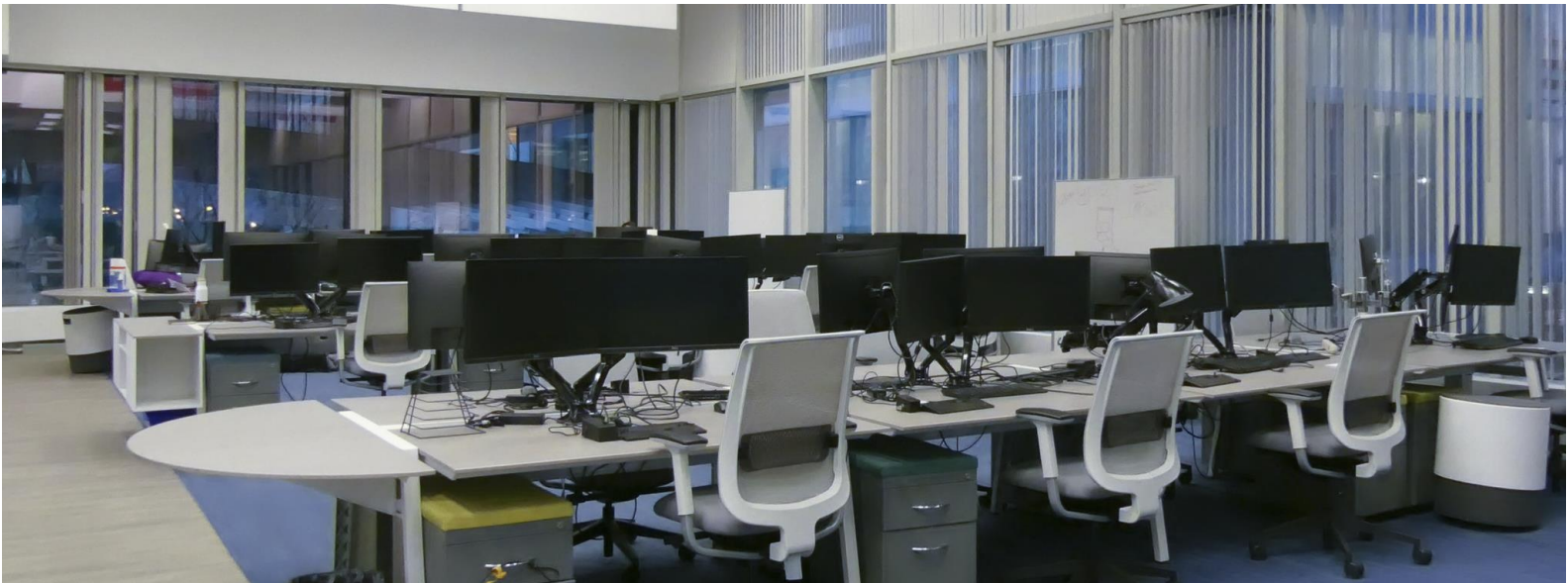
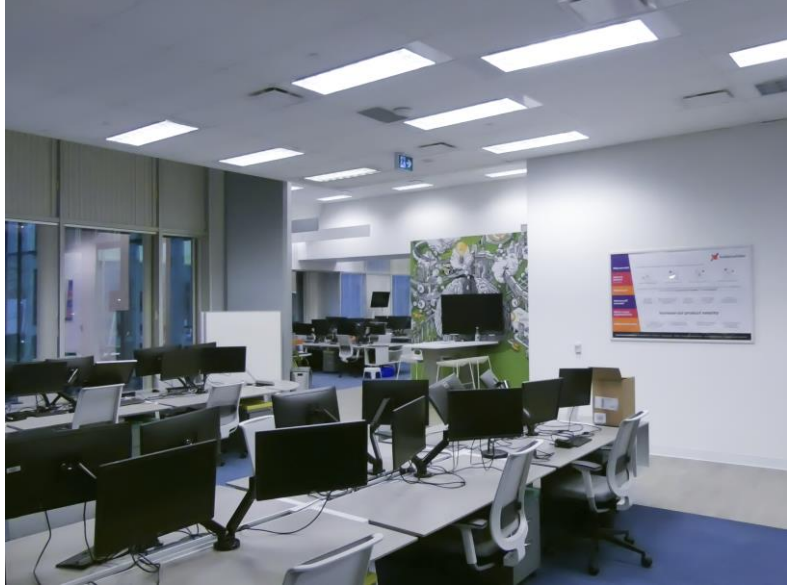
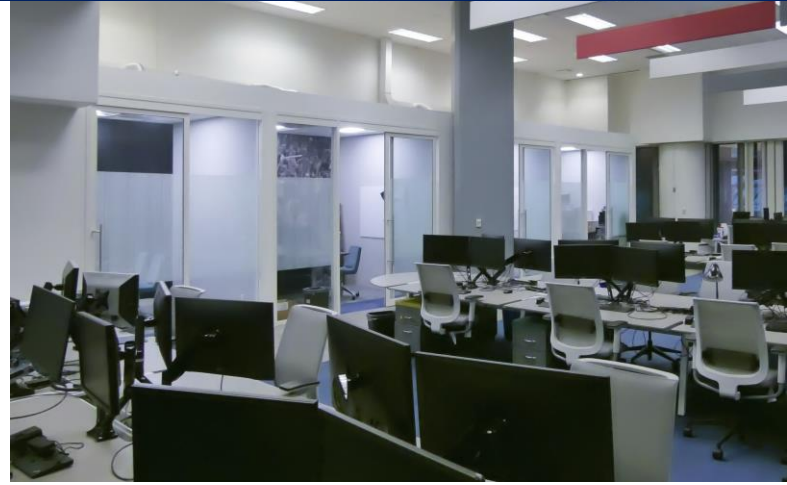
- Plug and Play sublease with < 2 year old improvements
- Incredibly efficient layout, with open plan seating for 48 people
- 4 private offices/meeting rooms and open meeting area
- Abundance of natural light, with windows on 3 sides
- PATH connected and a short walk to St. Andrew subway station, bordering the Financial Core and vibrant Downtown West submarkets.
- Furniture available



Mark Tittleman
Vice President,
Sales Representative
647.990.8413
mtittleman@cresa.com

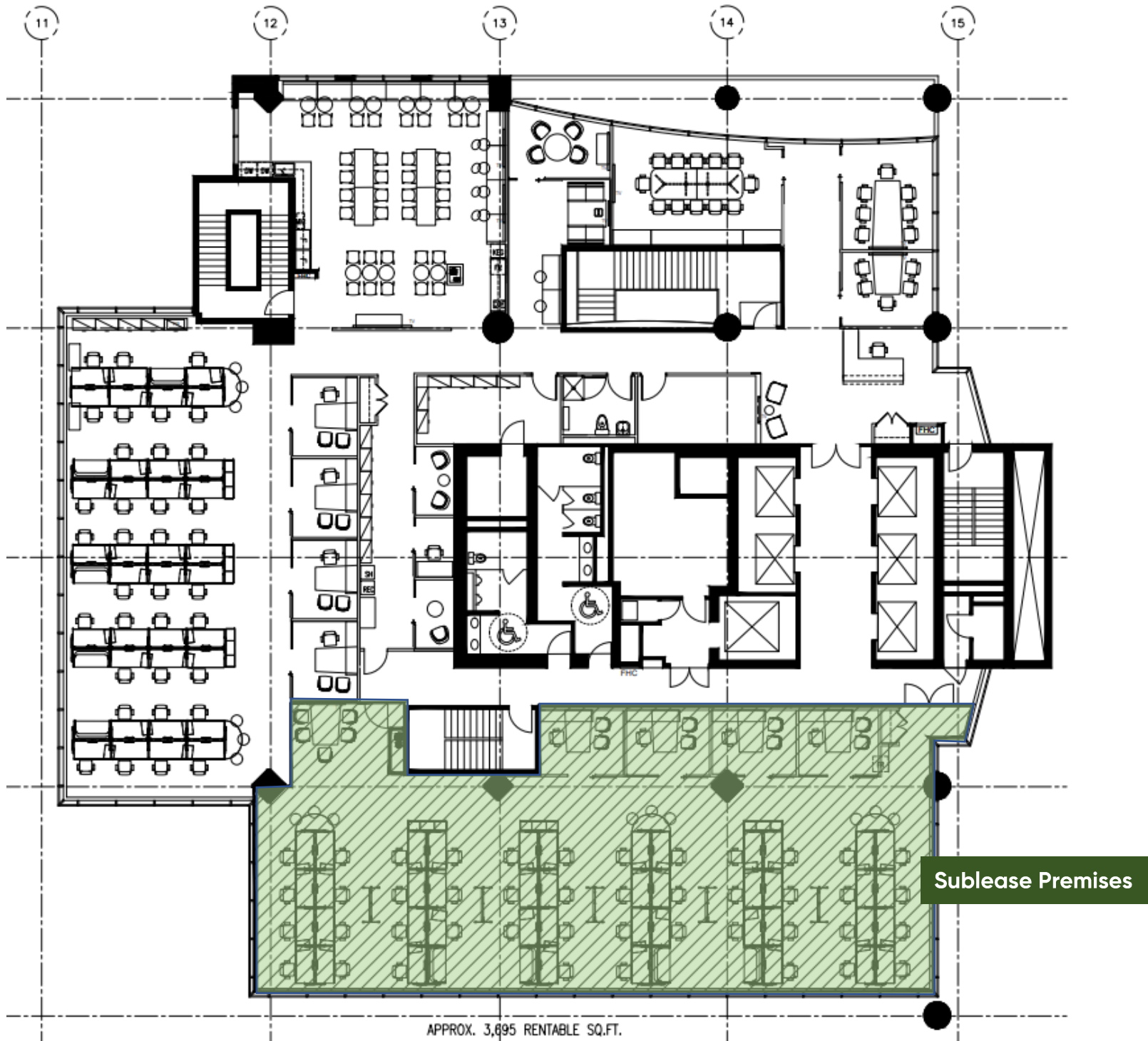
VIEW THE VIRTUAL TOUR 360°

Even though obtained from sources deemed reliable, no warranty or representation, express or implied, is made as to the accuracy of the information herein, and it is subject to errors, omissions, change of price, rental or other conditions, withdrawal without notice, and to any special listing conditions imposed by our principals.



Mark Tittleman

Vice President,
Sales Representative
647.990.8413
mtittleman@cresa.com



Mark Titleman
Vice President,
Sales Representative
647.990.8413
mtitleman@cresa.com