

Sublease Available

**111 George Street,
Toronto ON**

Space Profile

Premises	Suite 300
Total Rentable Area	12,292 SF
Net Rate	Call Agent to Discuss
TMI	\$13.70 PSF (2021)
Availability	30 Days
Expiry Date	March 31, 2025

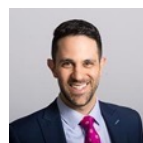
Features

- Extremely rare, full-floor brick and beam opportunity in Toronto's Downtown East
- Great mix of open and closed spaces
- Abundance of natural light
- Furniture can be made available
- Available secure on-site parking



[Click For Virtual Tour](#)

For More Information



Mark Tittleman
Vice President,
Sales Representative
647.990.8413
mtittleman@cresa.com

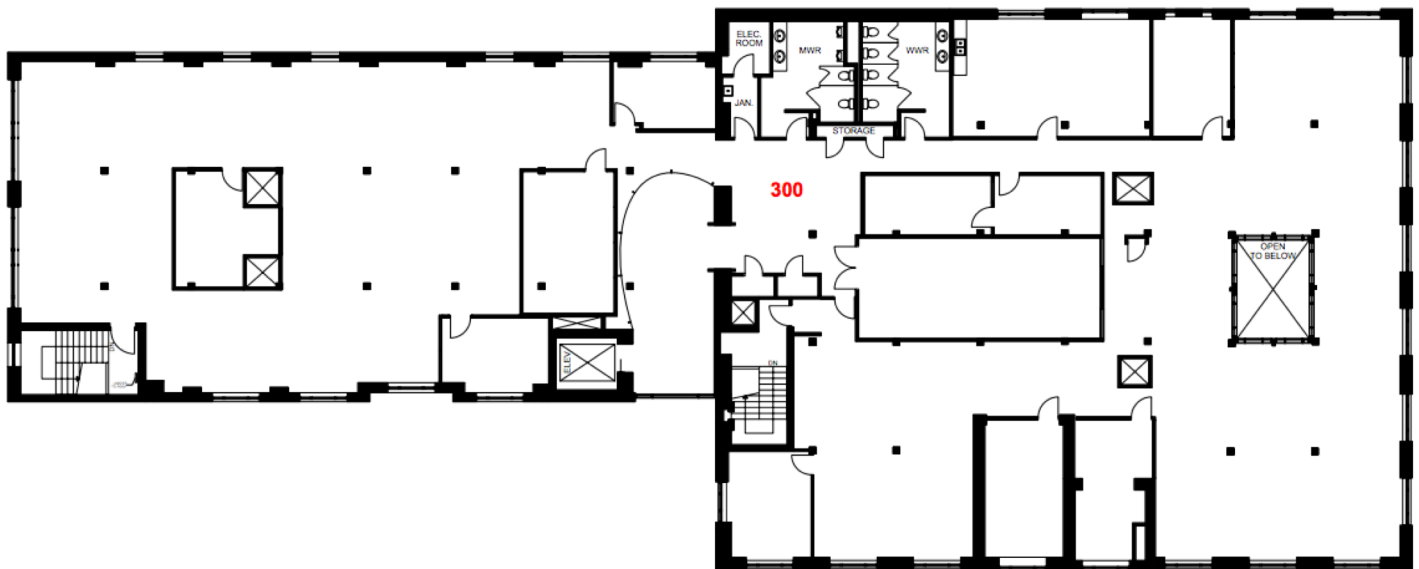


Mark Zettel MBA, CPA, CMA
Principal, Sales Representative
647.409.5212
mzettel@cresa.com

Cresa Toronto Inc., Brokerage - 170 University Ave, Suite 1100 - Toronto, ON M5H 3B3 cresa.com/toronto

Even though obtained from sources deemed reliable, no warranty or representation, express or implied, is made as to the accuracy of the information herein, and it is subject to errors, omissions, change of price, rental or other conditions, withdrawal without notice, and to any special listing conditions imposed by our principals.

Suite 300 – 12,292 SF As-Built Floor Plan



For More Information



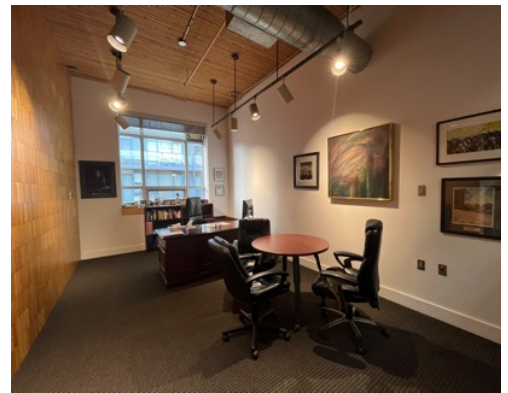
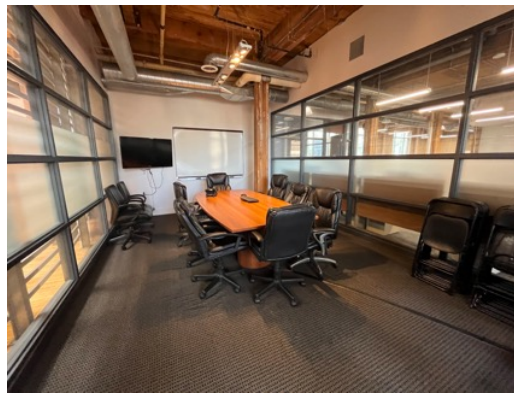
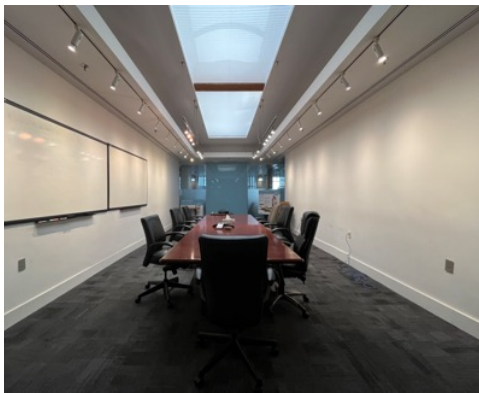
Mark Titleman
Vice President,
Sales Representative
647.990.8413
mtitleman@cresa.com



Mark Zettel MBA, CPA, CMA
Principal, Sales Representative
647.409.5212
mzettel@cresa.com



111 George Street,
Toronto ON



For More Information



Mark Titleman
Vice President,
Sales Representative
647.990.8413
mtitleman@cresa.com



Mark Zettel MBA, CPA, CMA
Principal, Sales Representative
647.409.5212
mzettel@cresa.com

Cresa Toronto Inc., Brokerage - 170 University Ave, Suite 1100 - Toronto, ON M5H 3B3 cresa.com/toronto