



**\$2.00 PSF flat Co-op Brokerage Fee**

## Sublease Available

**Short Term Turnkey Corner Unit at  
St. Clair West and Yonge**

**1 St. Clair Avenue West,  
Toronto ON**

### Space Profile

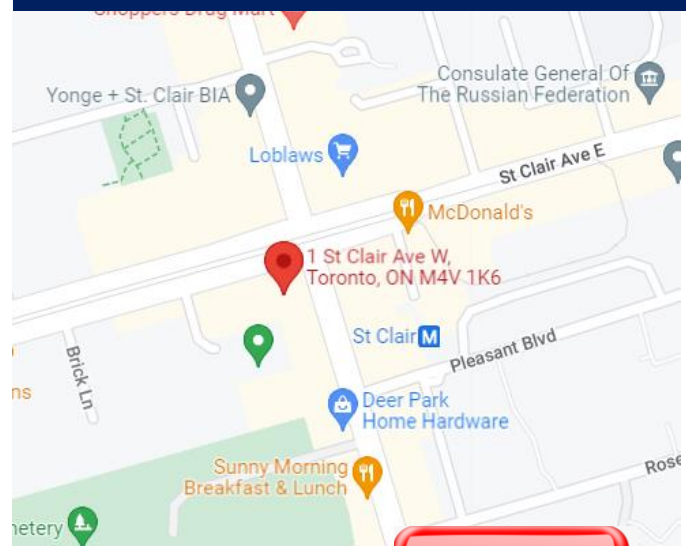
<b>Premises</b>	Suite 501
<b>Total Rentable Area</b>	2,007 SF
<b>Net Rent</b>	Contact Listing Agents
<b>Additional Rent</b>	\$23.30 PSF
<b>Availability</b>	Immediate
<b>Term</b>	March 13, 2023

### Features

- Turn-key opportunity, fully cabled and furnished
- Efficiently built-out corner unit with 5 private offices on glass, interior boardroom, and kitchenette
- Perfect space for professional services use, law-firm, etc.
- Excellent views of St. Clair and north on Yonge Street
- Head landlord open to extension beyond 2023 sublease expiry

### For More Information

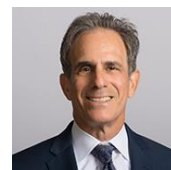
**Cresa Toronto Inc., Brokerage**  
170 University Ave,  
Suite 1100 Toronto,  
ON M5H 3B3  
[cresa.com/toronto](http://cresa.com/toronto)



[Click Here  
for  
Virtual Tour](#)

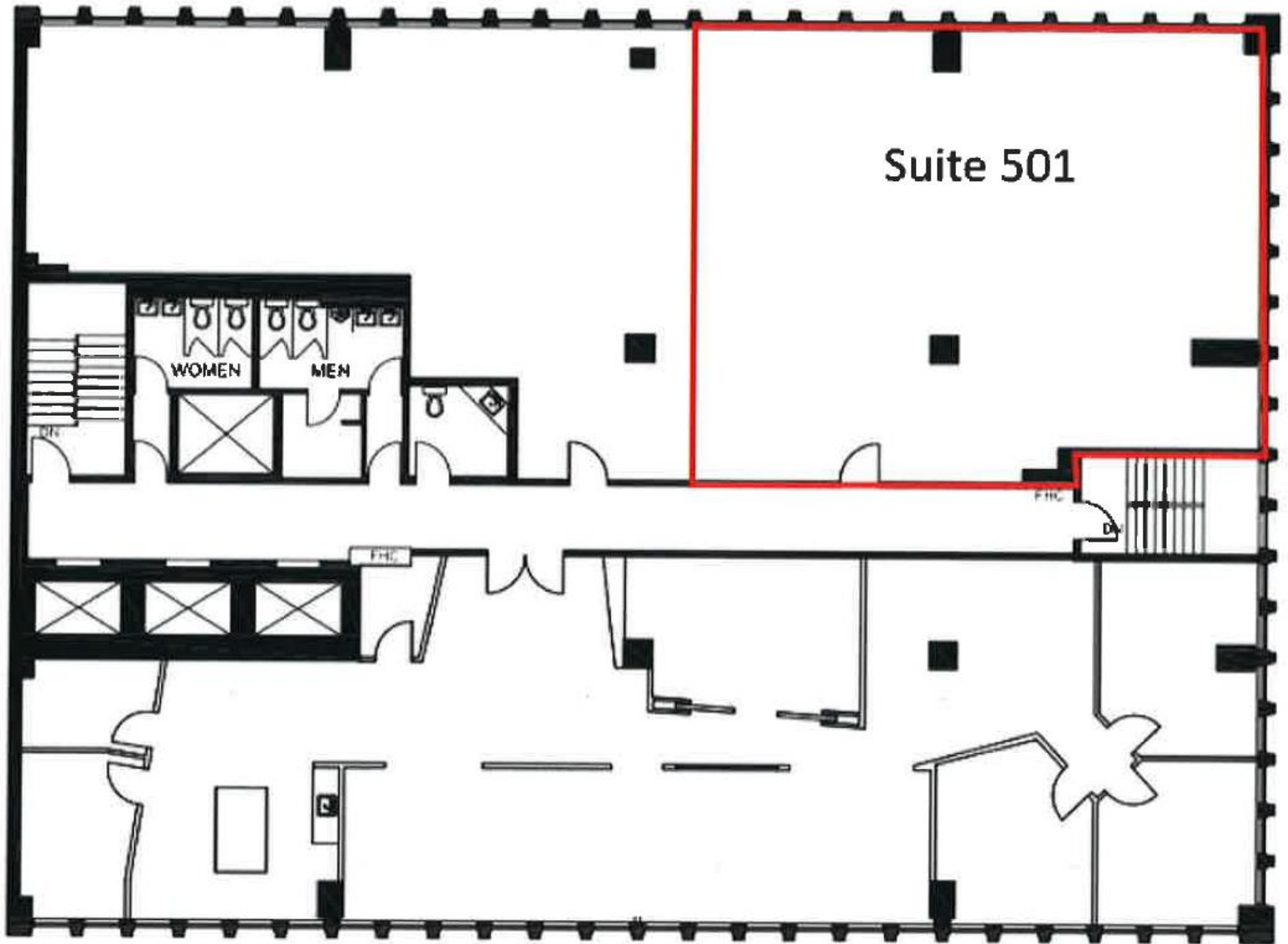


**Mark Zettel MBA, CPA, CMA**  
Principal, Sales Representative  
647.409.5212  
[mzettel@cresa.com](mailto:mzettel@cresa.com)



**Dean Newman**  
Principal, Broker  
647.286.7171  
[dnewman@cresa.com](mailto:dnewman@cresa.com)

Even though obtained from sources deemed reliable, no warranty or representation, express or implied, is made as to the accuracy of the information herein, and it is subject to errors, omissions, change of price, rental or other conditions, withdrawal without notice, and to any special listing conditions imposed by our principals.



**Mark Zettel** MBA, CPA, CMA  
Principal, Sales Representative  
647.409.5212  
mzettel@cresa.com



**Dean Newman**  
Principal, Broker  
647.286.7171  
dnewman@cresa.com





**1 St. Clair Avenue West,  
Toronto ON**



**Mark Zettel MBA, CPA, CMA**  
Principal, Sales Representative  
647.409.5212  
mzettel@cresa.com



**Dean Newman**  
Principal, Broker  
647.286.7171  
dnewman@cresa.com

