

# Sublease Available

1 St. Clair Ave West  
Toronto, ON

## Space Profile

Premises	Suites 503 and/or 502
Total Rentable Area	503 - 3,339 SF 502 - 1,695 SF Combined = 5,034SF
Net Rate	Call Agent to Discuss
TMI	\$23.30 PSF (2021 est.)
Available	Immediately
Term	April 29, 2024



## Features

- Steps from St. Clair subway station
- 2 suites available, across the hall from each other
- Furniture can be made available

### Suite 503:

- Extremely bright with south-facing views
- Modern, exposed ductwork ceiling
- 26 desks in open plan, 4-6 person meeting room and 2 offices (1 Executive Office)
- Plumbing roughed in

### Suite 502:

- Flexible open area for communal dining or open plan seating
- Modern kitchen
- Boardroom, 4-6 person meeting room and 2 person meeting room

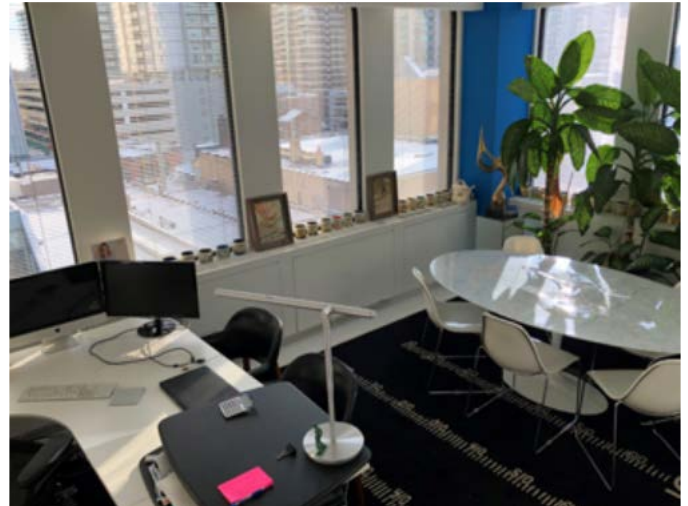
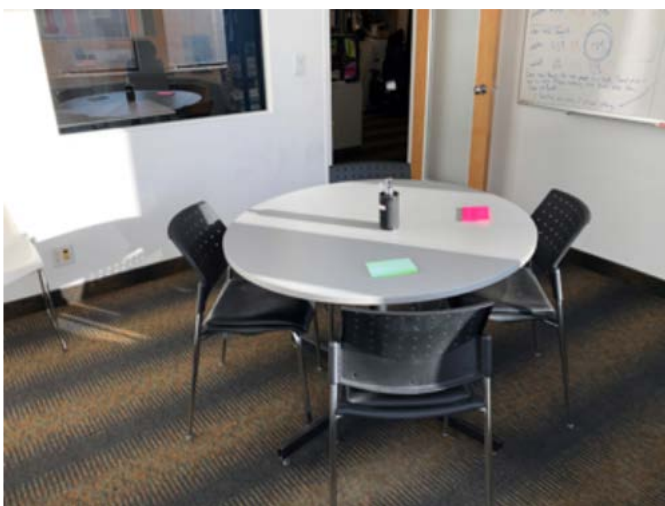
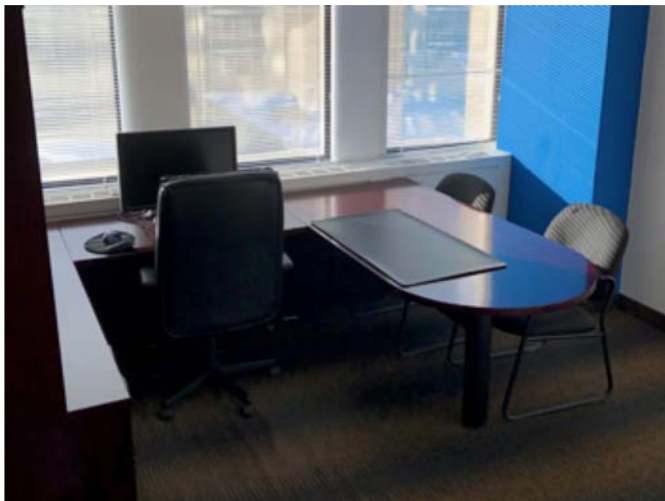
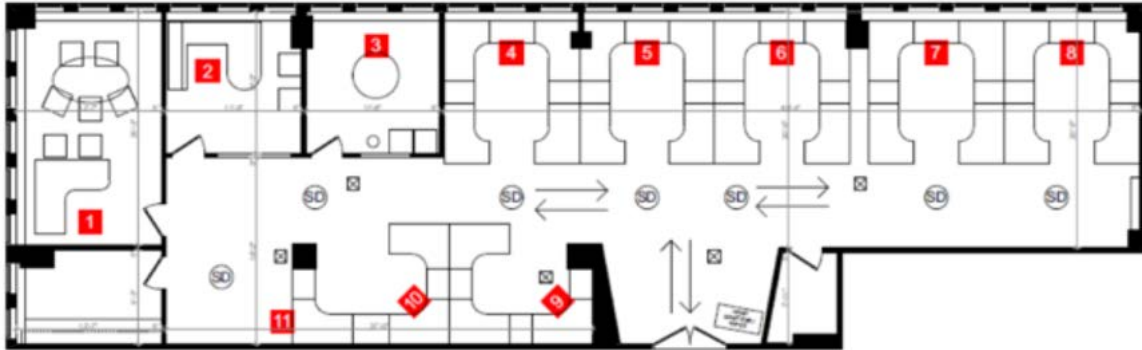
## For More Information

**Cresa Toronto Inc., Brokerage**  
170 University Ave, Suite 1100  
Toronto, ON - M5H 3B3  
[cresa.com/toronto](http://cresa.com/toronto)



**Mark Titleman**  
Vice President,  
Sales Representative  
647.990.8413  
[mtitleman@cresa.com](mailto:mtitleman@cresa.com)

Even though obtained from sources deemed reliable, no warranty or representation, express or implied, is made as to the accuracy of the information herein, and it is subject to errors, omissions, change of price, rental or other conditions, withdrawal without notice, and to any special listing conditions imposed by our principals.



**For More Information**

Cresa Toronto Inc., Brokerage  
170 University Ave, Suite 1100  
Toronto, ON M5H 3B3  
[cresa.com/toronto](http://cresa.com/toronto)



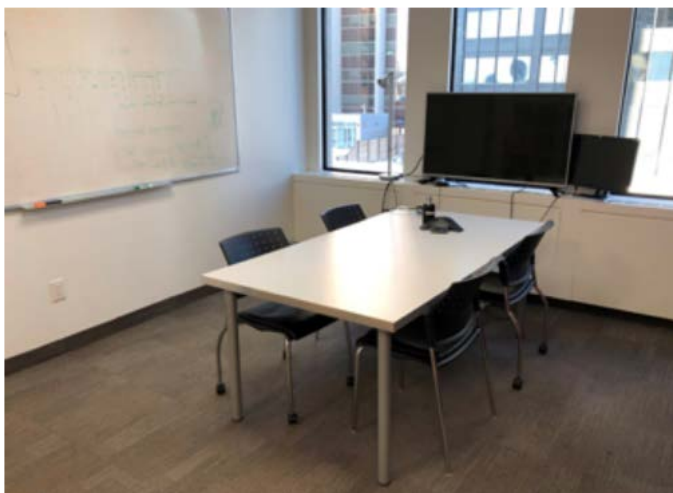
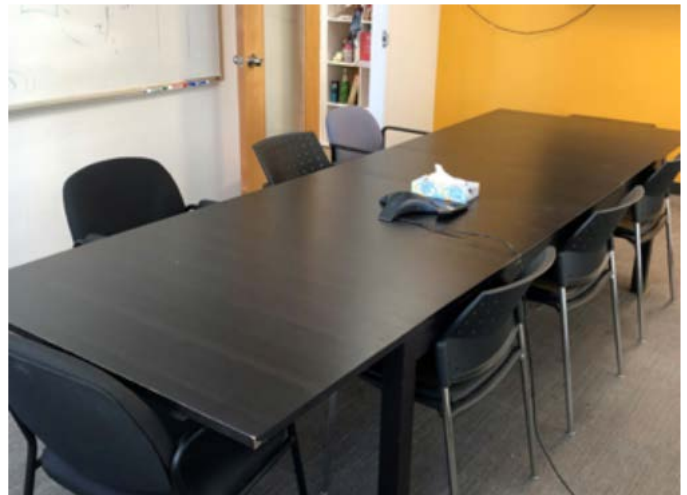
**Mark Titleman**  
Vice President,  
Sales Representative  
647.990.8413  
[mtitleman@cresa.com](mailto:mtitleman@cresa.com)





1 St. Clair Ave West  
Toronto, ON

Suite 502



**For More Information**

Cresa Toronto Inc., Brokerage  
170 University Ave, Suite 1100  
Toronto, ON M5H 3B3  
cresa.com/toronto



**Mark Titleman**  
Vice President,  
Sales Representative  
647.990.8413  
mtitleman@cresa.com