



620 Davis Street San Francisco, CA

Sublease Available

Space Profile

| | |
|---------------------|--------------|
| Premises | Suite 120 |
| Size | 4,530 RSF |
| Rental Rate | Upon Request |
| Availability | Immediate |
| Term | 10/30/21 |

Features

- Short Term Sublease In Great Condition
- 6 Private Offices, Open Workspaces, Breakout Rooms, Indoor/Outdoor Common Areas and a Multi-Functional All-Hands Area with a Fully Equipped Bar
- Furnished Board Room with 2 Large Conference Tables, Glass Foldable Wall and Projector Screen
- 2 Meeting Rooms Each with a Large Table and White Board
- 14 Individual Height Adjustable Desks, 2 Large Communal Tables with 10 Workstations and a Built-in Standing Desk Unit for 5 People
- Multiple Soft-Seating Areas
- Recent Building And Tenant Park Upgrades



For More Information

Patrick Hearst

Senior Advisor
858.334.5301
PHearst@cresa.com

Peter Sabesan

Managing Principal
212.687.4518
PSabesan@cresa.com

Nicholas Markel

Vice President
212.687.4501
NMarkel@cresa.com

Even though obtained from sources deemed reliable, no warranty or representation, express or implied, is made as to the accuracy of the information herein, and it is subject to errors, omissions, change of price, rental or other conditions, withdrawal without notice, and to any special listing conditions imposed by our principals.



260 California St., 9th Floor, San Francisco, CA 94111



620 DAVIS STREET

Suite 120 | 4,530 RSF



For More Information, Please Contact

Patrick Hearst
Senior Advisor
858.334.5301
PHearst@cresa.com

Peter Sabesan
Managing Principal
212.687.4518
PSabesan@cresa.com

Nicholas Markel
Vice President
212.687.4501
NMarkel@cresa.com

Cresa
260 California Street
9th Floor
San Francisco, CA 94111



620 DAVIS STREET

Suite 120 | 4,530 RSF



For More Information, Please Contact

Patrick Hearst
Senior Advisor
858.334.5301
PHearst@cresa.com

Peter Sabesan
Managing Principal
212.687.4518
PSabesan@cresa.com

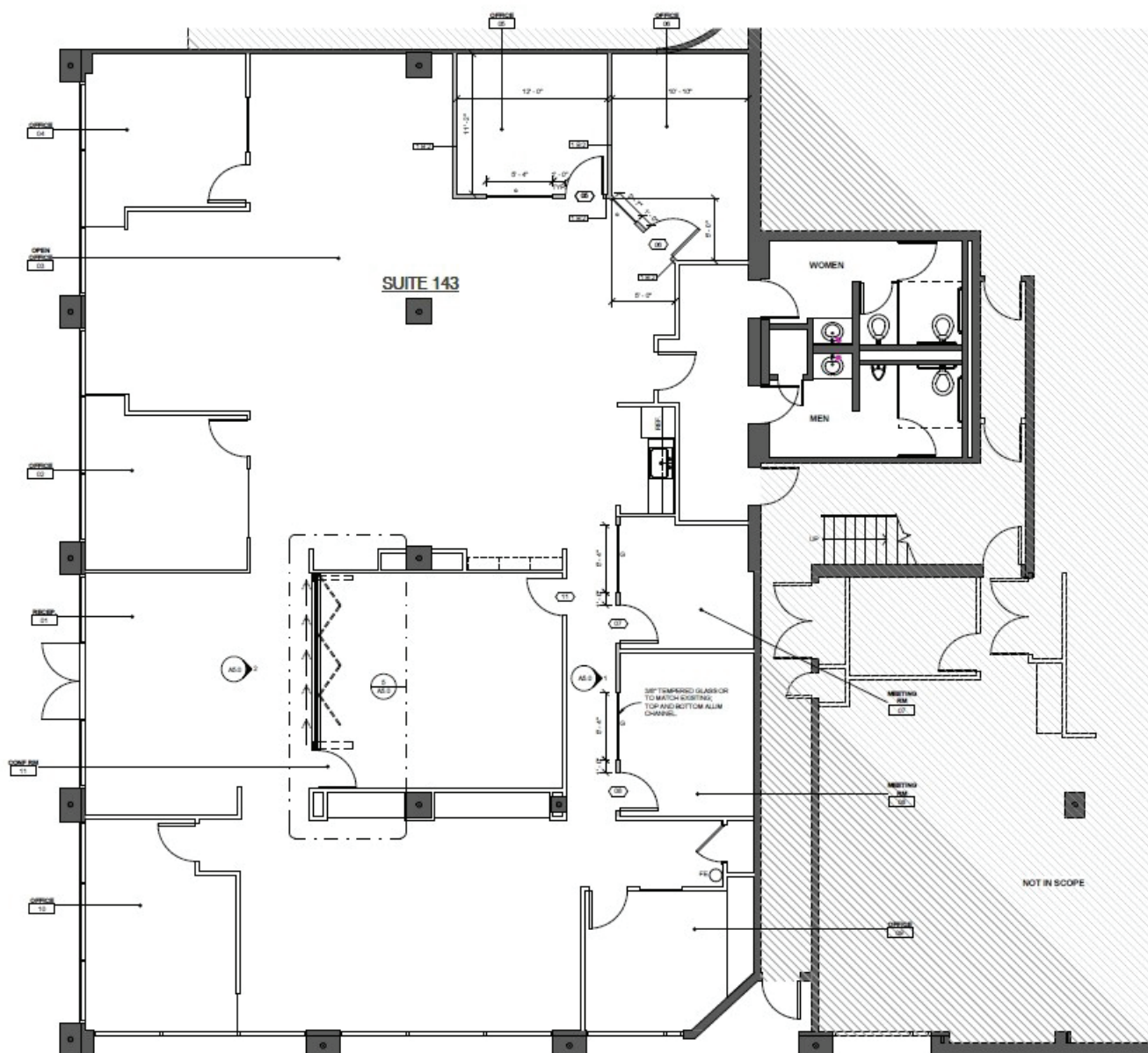
Nicholas Markel
Vice President
212.687.4501
NMarkel@cresa.com

Cresa
260 California Street
9th Floor
San Francisco, CA 94111



620 DAVIS STREET

Suite 120 | 4,530 RSF



For More Information, Please Contact

Patrick Hearst
Senior Advisor
858.334.5301
PHearst@cresa.com

Peter Sabesan
Managing Principal
212.687.4518
PSabesan@cresa.com

Nicholas Markel
Vice President
212.687.4501
NMarkel@cresa.com

Cresa
260 California Street
9th Floor
San Francisco, CA 94111