

Sublease

832 Folsom Street

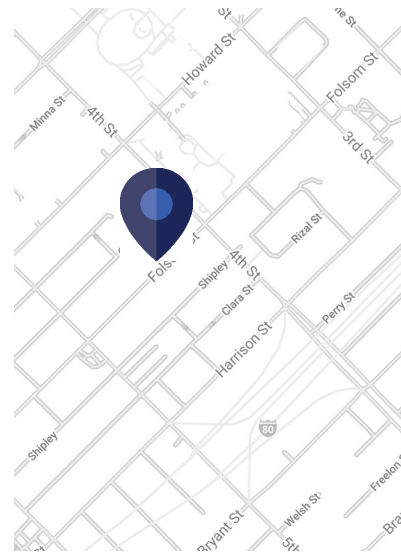
832 Folsom Street, 10th Floor
San Francisco, CA 94107

Space Profile:

| | |
|---------------------|------------------------|
| Premises | 10 th Floor |
| RSF | 4,290 RSF |
| Rental Rate | Please Inquire |
| Availability | 30 days |
| Term | Thru 10/31/2024 |

Features:

- Penthouse office
- City views
- 3 meeting rooms
- 2 phone rooms
- 1 conference room
- 3 sides of natural light
- Furniture can be included

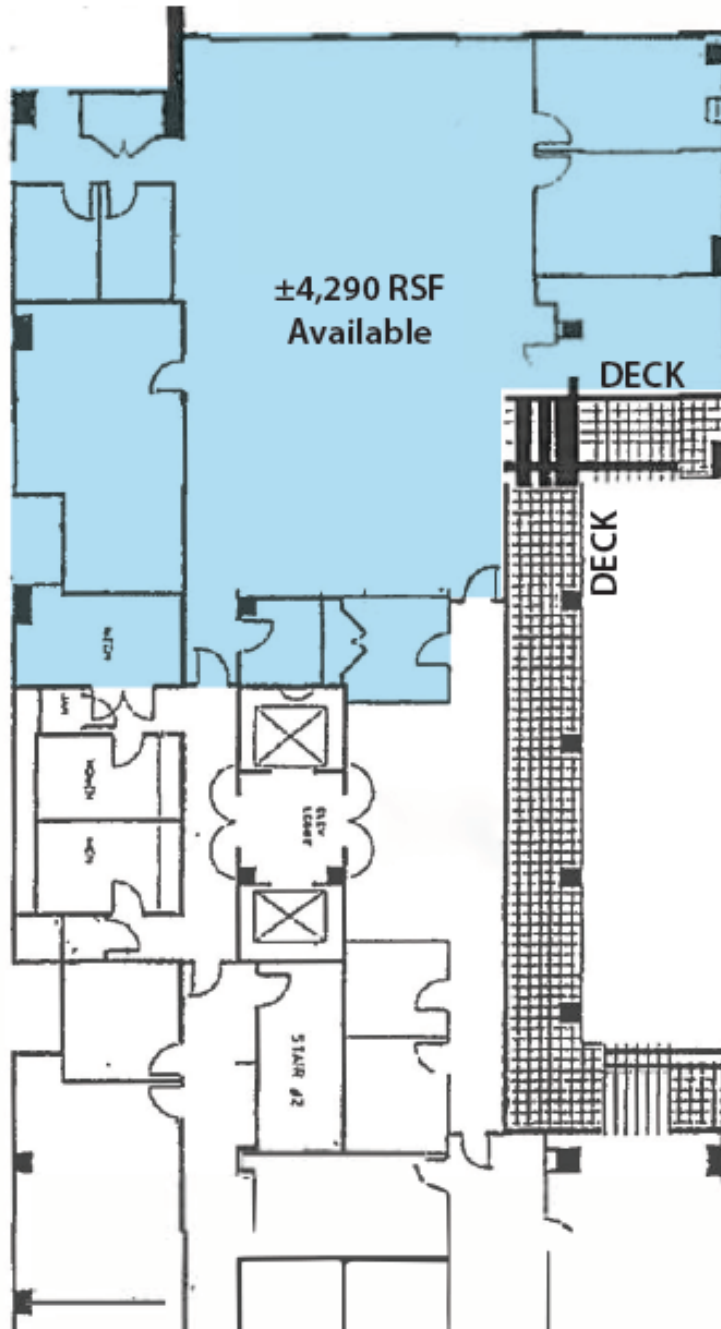


Contact:

Jonathan Zoucha
415.394.1044
jzoucha@cresa.com
BRE# 02080002

Brittney Lane
310.943.5152
blane@cresa.com
BRE# 01974478

832 Folsom Street
San Francisco, CA



Cresa © 2019. All rights reserved. The information contained in this document has been obtained from sources believed reliable. While Cresa does not doubt its accuracy, Cresa has not verified it and makes no guarantee, warranty, or representation about it. It is your responsibility to independently confirm its accuracy and completeness. Any projections, opinions, assumptions or estimates used are for example only and do not represent the current or future performance of the property. The value of this transaction to you depends on tax and other factors which should be evaluated by your tax, financial and legal advisors. You and your advisors should conduct a careful, independent investigation of the property to determine to your satisfaction the suitability of the property for your needs.



832 Folsom Street San Francisco, CA

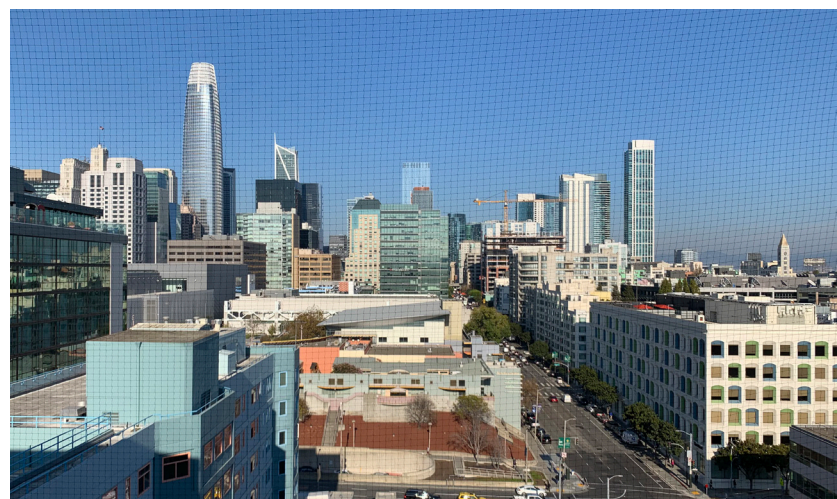
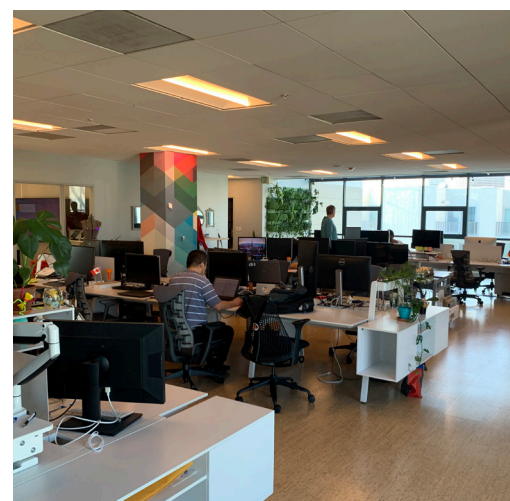
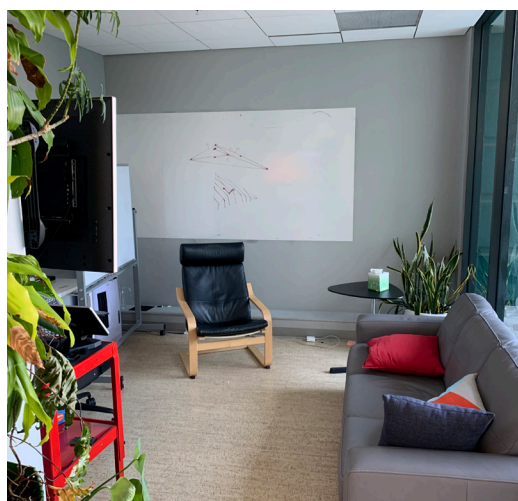
Contact:

Jonathan Zoucha

415.394.1044
jzoucha@cresa.com
BRE# 02080002

Brittney Lane

310.943.5152
blane@cresa.com
BRE# 01974478



cresa

Cresa © 2019. All rights reserved. The information contained in this document has been obtained from sources believed reliable. While Cresa does not doubt its accuracy, Cresa has not verified it and makes no guarantee, warranty, or representation about it. It is your responsibility to independently confirm its accuracy and completeness. Any projections, opinions, assumptions or estimates used are for example only and do not represent the current or future performance of the property. The value of this transaction to you depends on tax and other factors which should be evaluated by your tax, financial and legal advisors. You and your advisors should conduct a careful, independent investigation of the property to determine to your satisfaction the suitability of the property for your needs.