



Sublease

Plug and Play Space Available

425 California Street
San Francisco, CA

Space Profile:

Premises	12th Floor
RSF	4,871 RSF
Rental Rate	Call for details
Availability	Immediately
Term	Flexible term (minimum 3 months) through July 2023

Features:

- Plug and play
- Furnished with 48 workstations
- 3 conference rooms
- 1 phone booth
- Multiple casual meeting areas
- Kitchen

Contact:

Patrick Hearst
858.334.5301
phearst@cresa.com
BRE#01994957

Brandon Leitner
617.875.1950
bleitner@cresa.com
BRE#02001670



425 California Street

San Francisco, CA

Contact:

Patrick Hearst

858.334.5301
phearst@cresa.com
BRE#01994957

Brandon Leitner

617.875.1950
bleitner@cresa.com
BRE#02001670

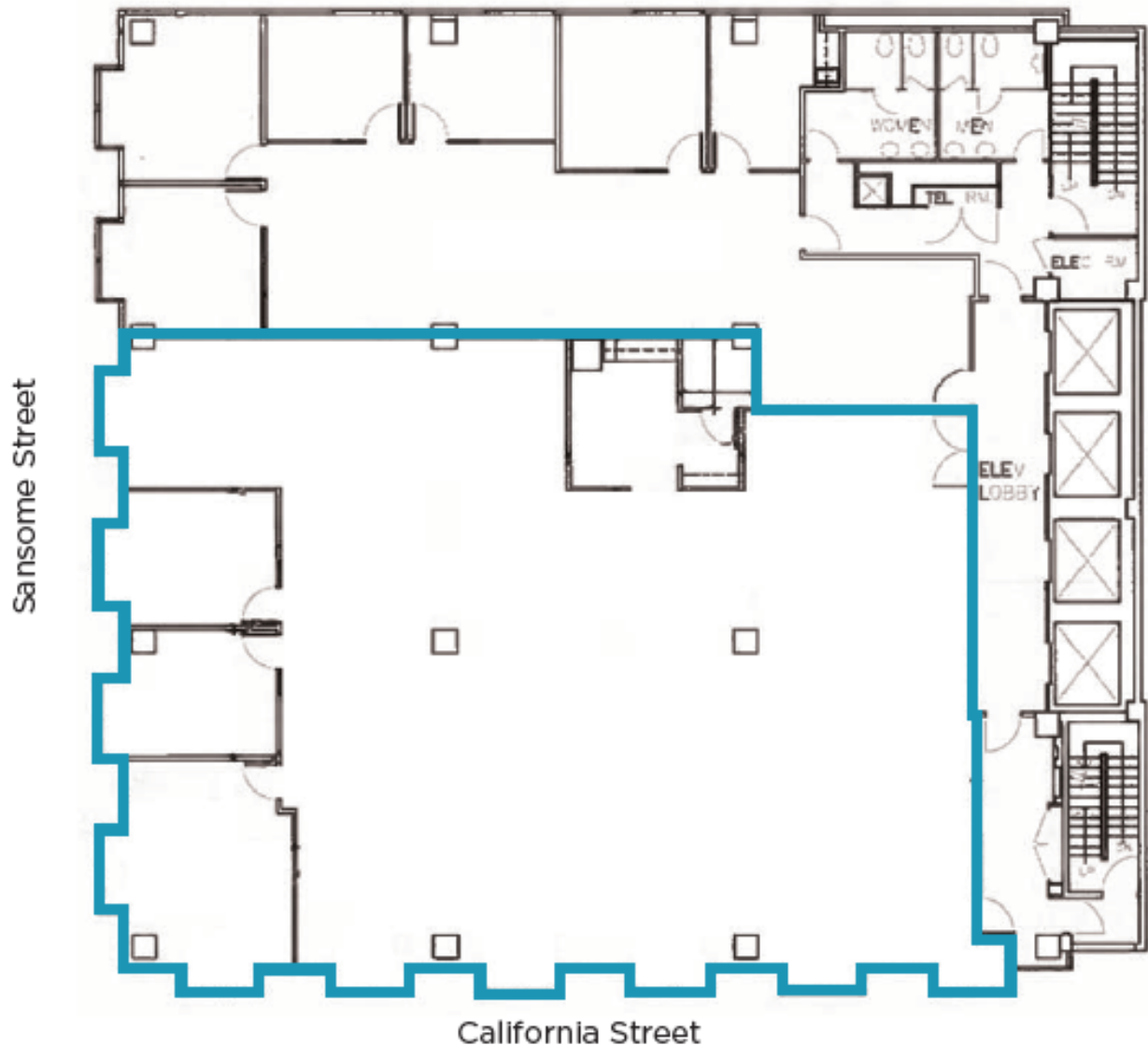


cresa

Cresa © 2020. All rights reserved. The information contained in this document has been obtained from sources believed reliable. While Cresa does not doubt its accuracy, Cresa has not verified it and makes no guarantee, warranty, or representation about it. It is your responsibility to independently confirm its accuracy and completeness. Any projections, opinions, assumptions or estimates used are for example only and do not represent the current or future performance of the property. The value of this transaction to you depends on tax and other factors which should be evaluated by your tax, financial and legal advisors. You and your advisors should conduct a careful, independent investigation of the property to determine to your satisfaction the suitability of the property for your needs.

425 California Street

San Francisco, CA



Cresa © 2020. All rights reserved. The information contained in this document has been obtained from sources believed reliable. While Cresa does not doubt its accuracy, Cresa has not verified it and makes no guarantee, warranty, or representation about it. It is your responsibility to independently confirm its accuracy and completeness. Any projections, opinions, assumptions or estimates used are for example only and do not represent the current or future performance of the property. The value of this transaction to you depends on tax and other factors which should be evaluated by your tax, financial and legal advisors. You and your advisors should conduct a careful, independent investigation of the property to determine to your satisfaction the suitability of the property for your needs.