



FOR SALE
1401
LAKESHORE
D R I V E
L O D I

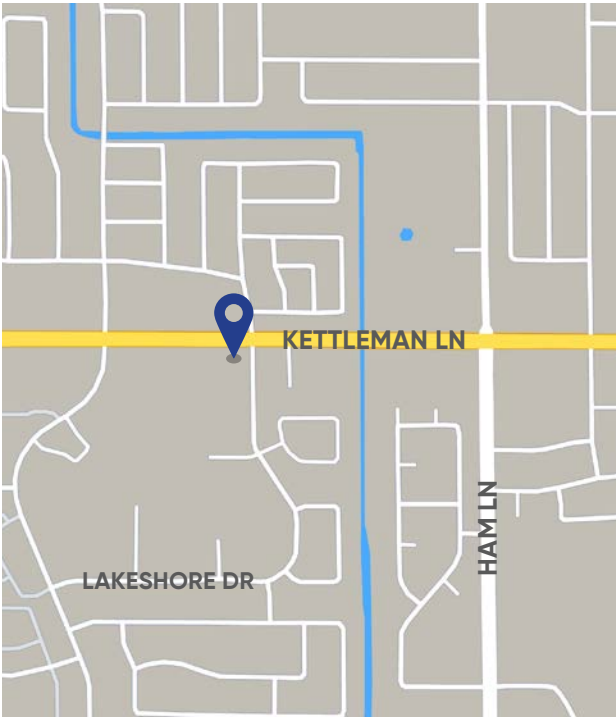
Property Profile

BUILDING SIZE	1st Floor: ±4,205 SF 2nd Floor: ±1,806 SF Total: ±6,011 SF
LAND SIZE	±47,565 SF
SALE PRICE	Not Disclosed
YEAR BUILT	2009
PARKING	6.6/1000, 40 spaces
APN NUMBERS	058-160-86
ZONING	RCP, Residential Commercial

Features

- Two story modern office building with extra land
- Former bank branch with drive-up ATM station
- Expansive window line with natural light
- Central location with many nearby amenities

Overview Map



FOR MORE INFORMATION

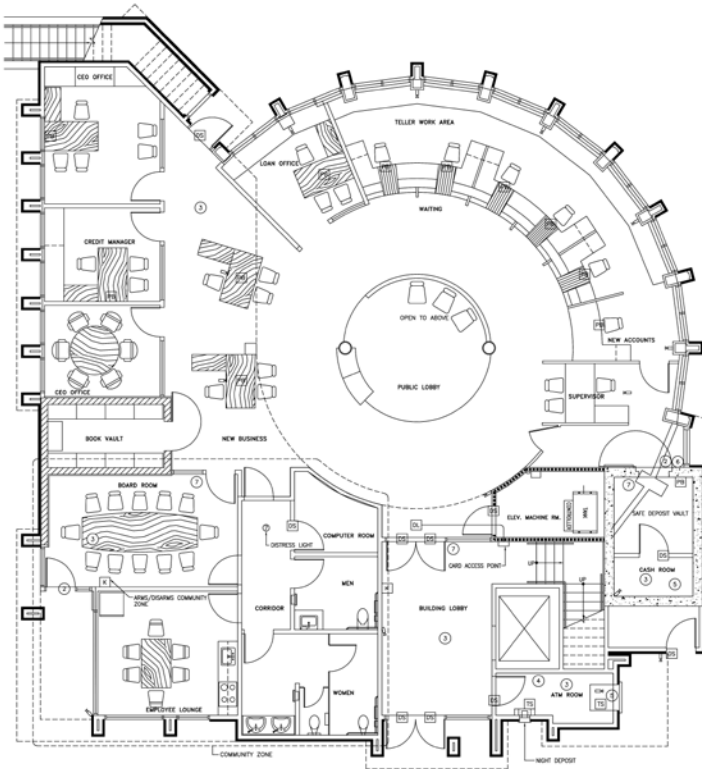
JIM NIETHAMMER | Managing Principal
 916.929.8898 | jniethammer@cresa.com
 BRE #01058588

CHRISTIAN M. RIEGEL | Senior Vice President
 310.943.5113 | criegel@cresa.com
 BRE #01030733

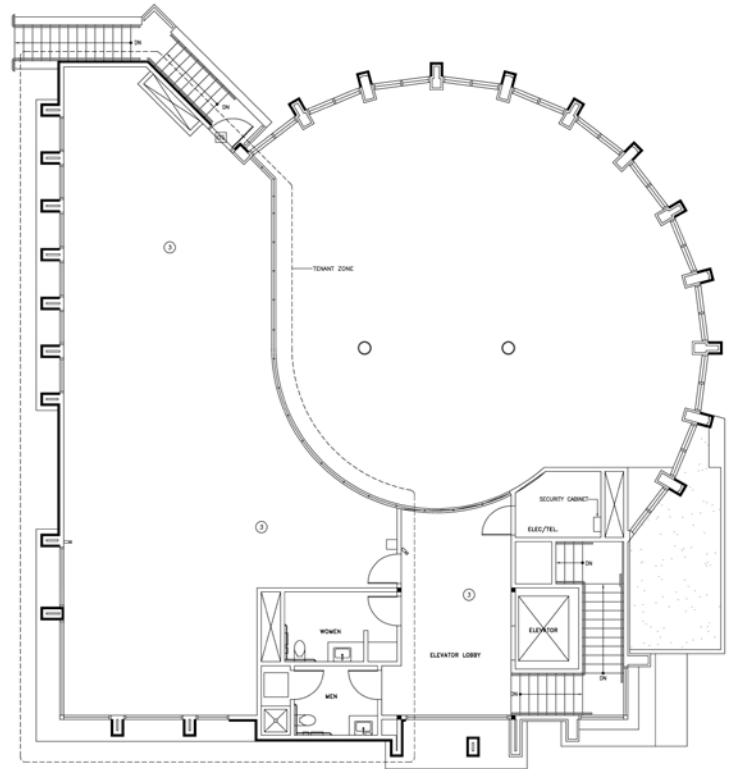




Floor Plans



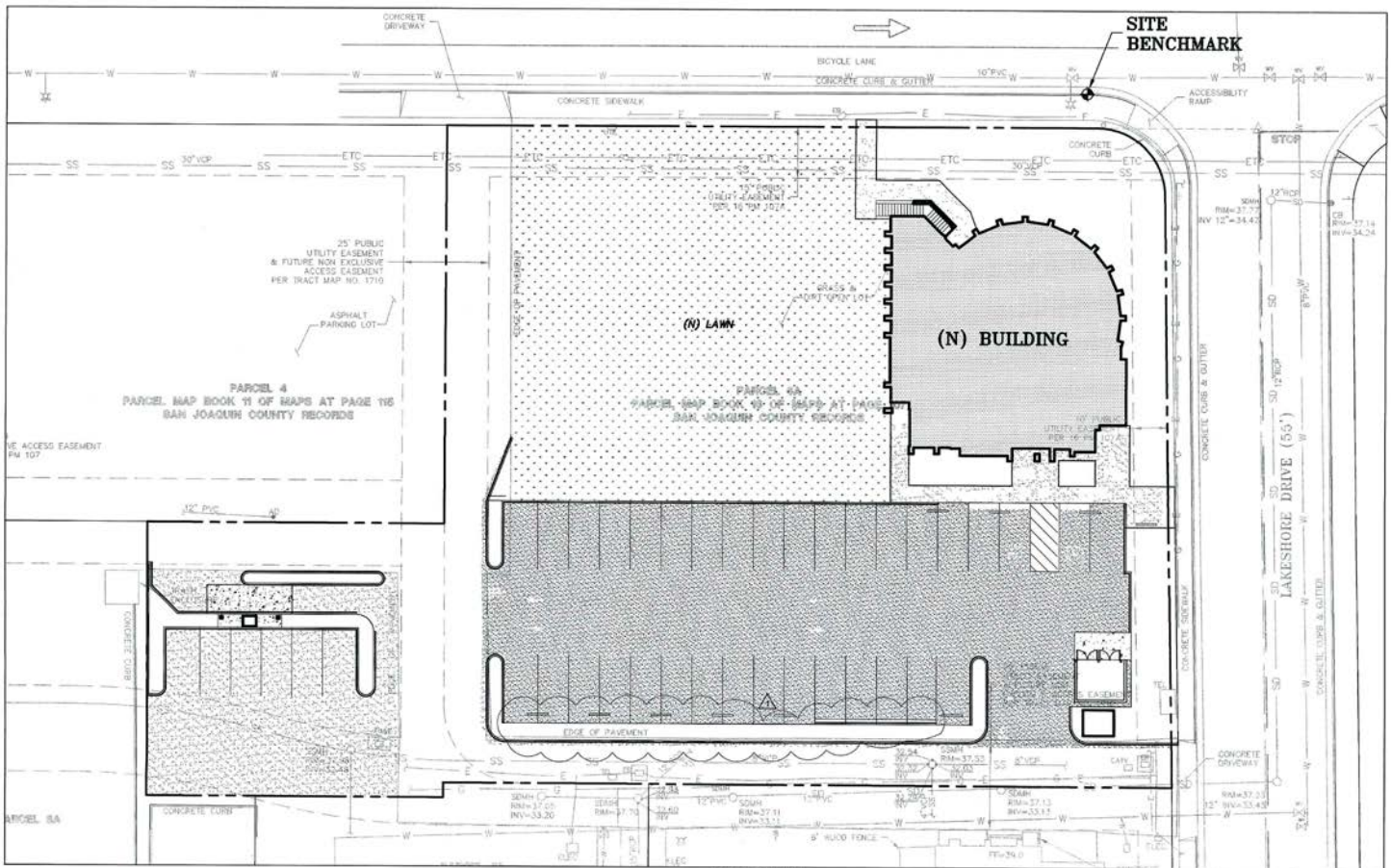
1st Floor - 4,205 SF



2nd Floor - 1,806 SF



Site Plan



KEY MAP
SCALE: 1" = 20'



1401 Lakeshore Dr

Lodi, CA 95242





Contact:

Jim Niethammer

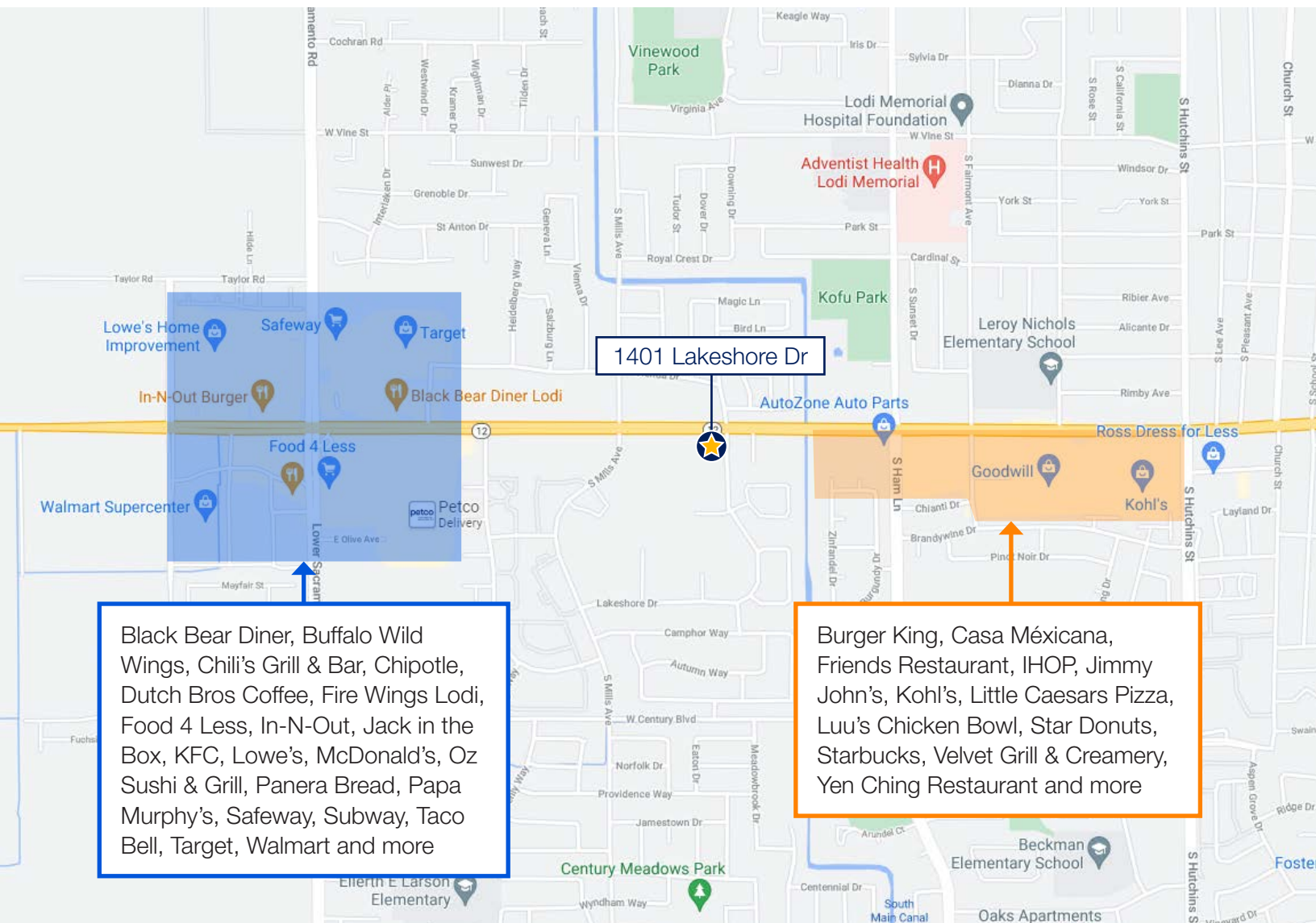
916.929.8898
jniethammer@cresa.com
BRE# 01058588

Christian M. Riegel

310.943.5113
criegel@cresa.com
BRE# 01030733

1401 Lakeshore Dr

Lodi, CA 95242



1401 Lakeshore Dr

Black Bear Diner, Buffalo Wild Wings, Chili's Grill & Bar, Chipotle, Dutch Bros Coffee, Fire Wings Lodi, Food 4 Less, In-N-Out, Jack in the Box, KFC, Lowe's, McDonald's, Oz Sushi & Grill, Panera Bread, Papa Murphy's, Safeway, Subway, Taco Bell, Target, Walmart and more

Burger King, Casa Mexicana, Friends Restaurant, IHOP, Jimmy John's, Kohl's, Little Caesars Pizza, Luu's Chicken Bowl, Star Donuts, Starbucks, Velvet Grill & Creamery, Yen Ching Restaurant and more