

# Office Sublease

Outside Storage Available

## Sutton Kilmer Industrial Park

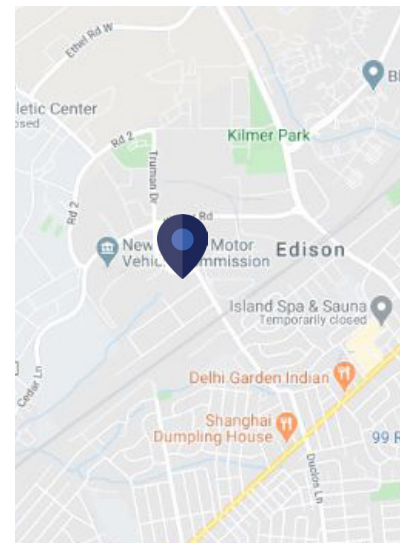
20 Truman Drive S  
Edison, New Jersey

### Space Profile:

<b>Premises</b>	1st Floor / Mezzanine
<b>RSF</b>	+/- 2,000-4,000 RSF (1st Floor) +/- 4,880 RSF (Mezzanine)
<b>Rental Rate</b>	Negotiable
<b>Availability</b>	Immediate
<b>Term</b>	Until 4.30.2022
<b>Building Class</b>	B
<b>Submarket</b>	Exit 10 Industrial
<b>Built</b>	1991
<b>Storage</b>	Limited outside available

### Features:

- Signage available on building at entrance to space
- Multiple conference rooms / meeting rooms, bullpen and private offices
- Conveniently located near Rt 27 and I 287
- Separate entrance to space
- Ample parking



### Contact:

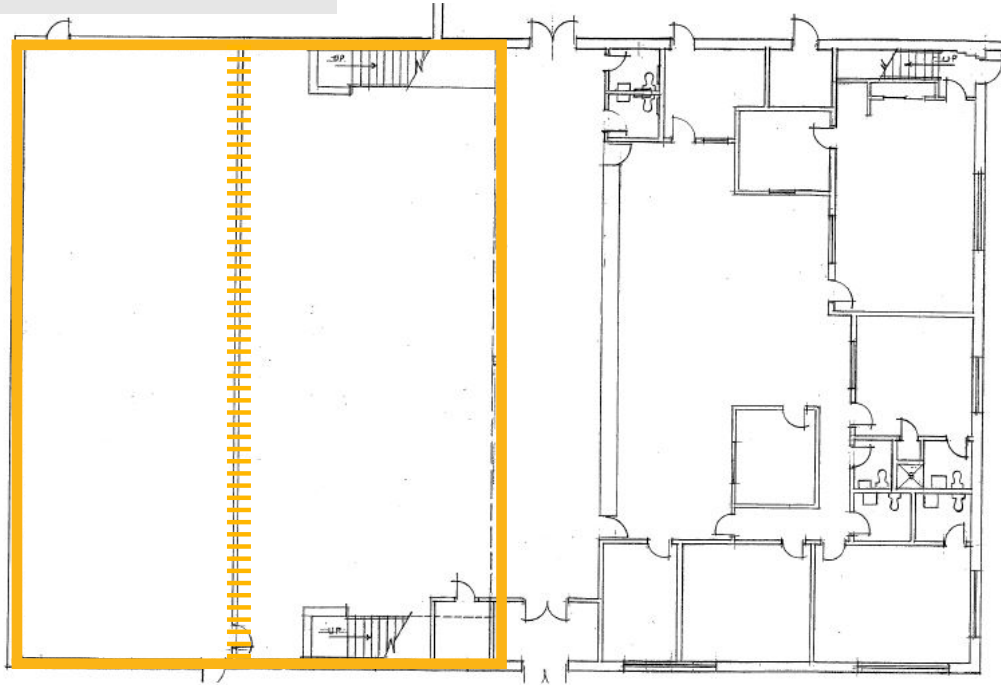


**James J. Scancarella**  
201.970.3659  
jscancarella@cresa.com

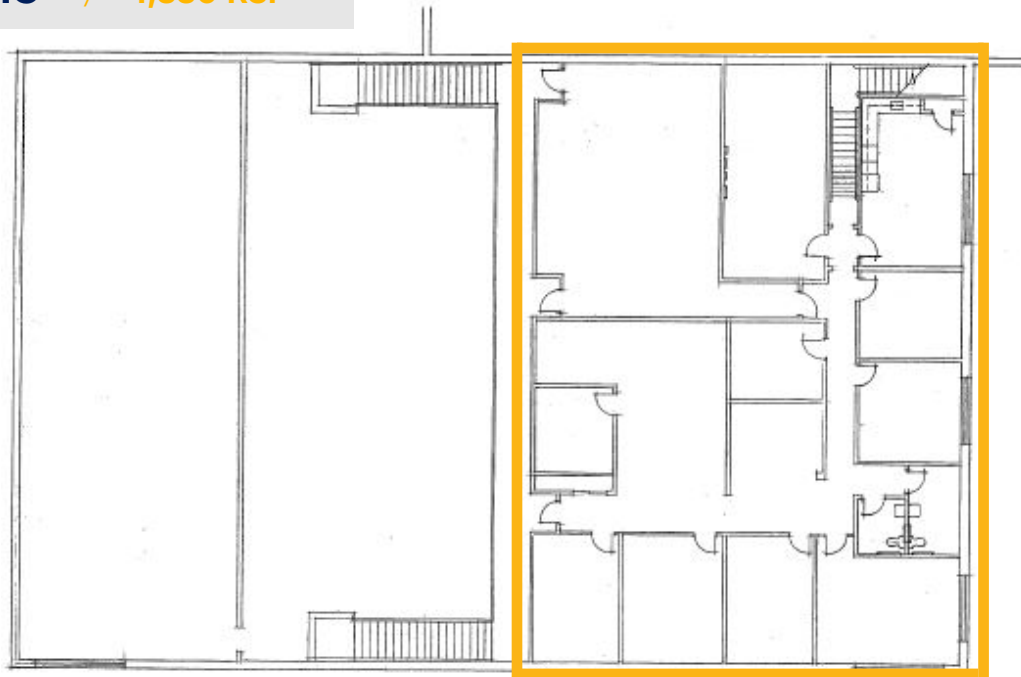
## Floor Plans

+/- 8,880 RSF

### 1st Floor +/- 2,000-4,000 RSF (Divisible)



### Mezzanine +/- 4,880 RSF



cresa

Cresa © 2019. All rights reserved. The information contained in this document has been obtained from sources believed reliable. While Cresa does not doubt its accuracy, Cresa has not verified it and makes no guarantee, warranty, or representation about it. It is your responsibility to independently confirm its accuracy and completeness. Any projections, opinions, assumptions or estimates used are for example only and do not represent the current or future performance of the property. The value of this transaction to you depends on tax and other factors which should be evaluated by your tax, financial and legal advisors. You and your advisors should conduct a careful, independent investigation of the property to determine to your satisfaction the suitability of the property for your needs.



**Bullpen / Open Space**



**Bullpen / Open Space**



**20 Truman Dr S**

**Edison, NJ**

**Training Room with Furniture**



**Gated / Secured Yard with Storage**



**cresa**

Cresa © 2019. All rights reserved. The information contained in this document has been obtained from sources believed reliable. While Cresa does not doubt its accuracy, Cresa has not verified it and makes no guarantee, warranty, or representation about it. It is your responsibility to independently confirm its accuracy and completeness. Any projections, opinions, assumptions or estimates used are for example only and do not represent the current or future performance of the property. The value of this transaction to you depends on tax and other factors which should be evaluated by your tax, financial and legal advisors. You and your advisors should conduct a careful, independent investigation of the property to determine to your satisfaction the suitability of the property for your needs.