

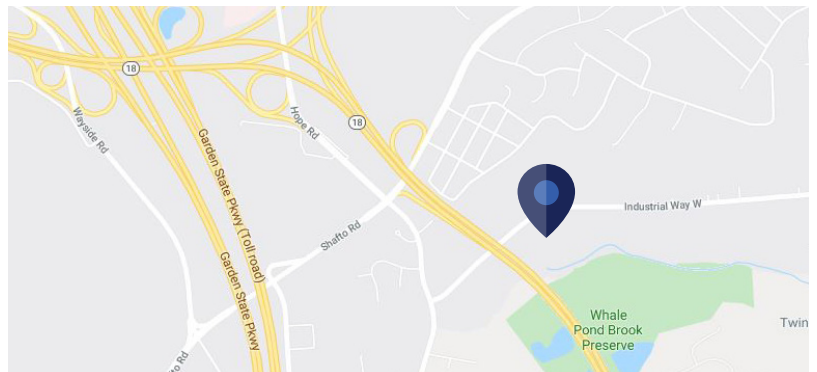
Sublease



541 Industrial Way West Eatontown, NJ 07724

Space Profile

Space Size	8,800-15,000 SF
Availability	Immediate Occupancy
Term	Thru July 2023
Renovated	2017



Features

- Office furniture and workstations available
- Abundant parking
- Great location
- On site facility supervisor
- Restaurants and shopping nearby
- Close to major highways

Contact



Glenn DiGiacomo
Vice President
P. 201.931.5774
gdigiaco@cresa.com



Tom Kim
Vice President
P. 201.591.4566
tkim@cresa.com



James J. Scancarella
Managing Principal
201.970.3659
jscancarella@cresa.com



541 Industrial Way West
Eatontown, NJ 07724

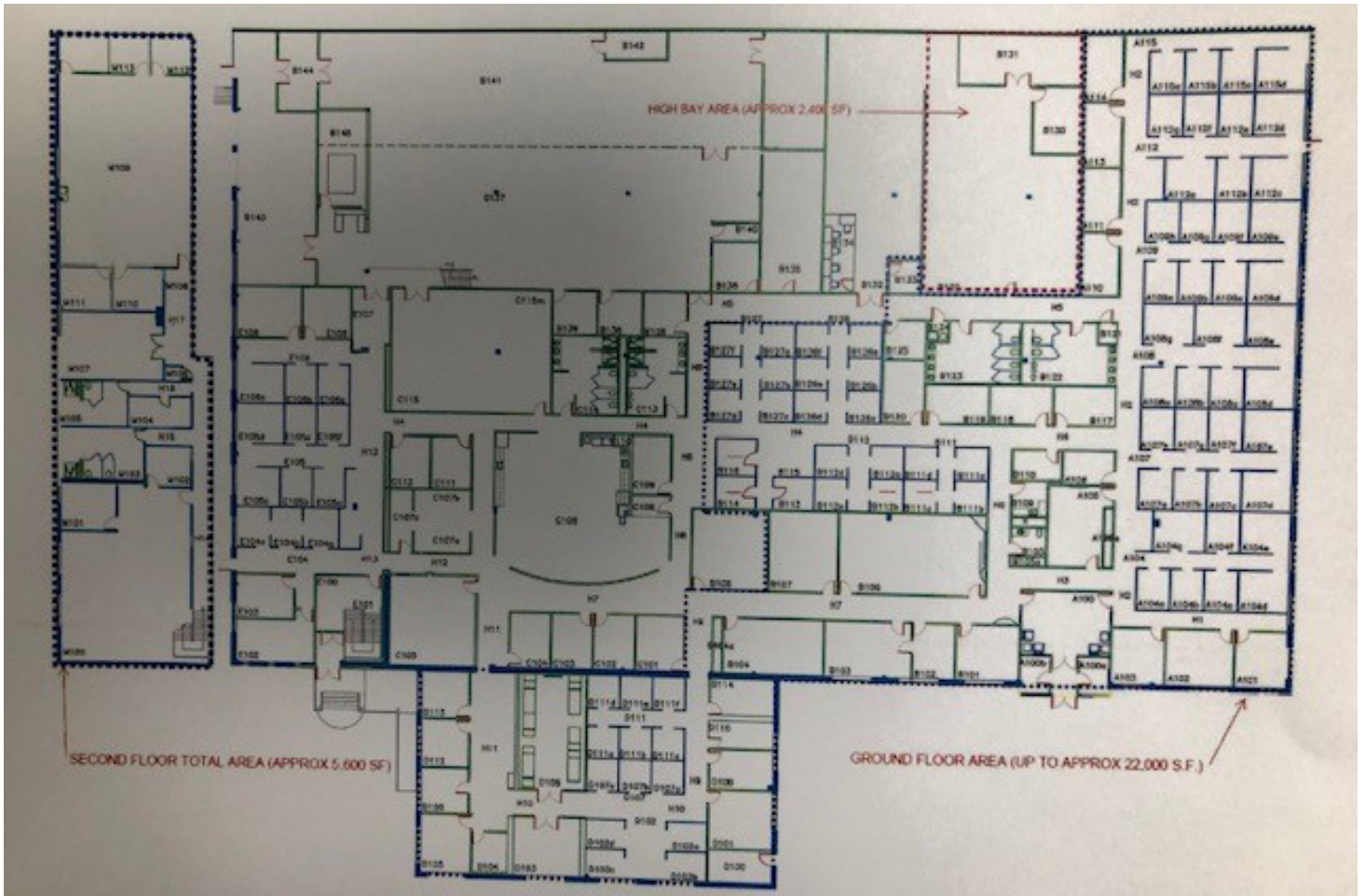


cresa 

Cresa © 2019. All rights reserved. The information contained in this document has been obtained from sources believed reliable. While Cresa does not doubt its accuracy, Cresa has not verified it and makes no guarantee, warranty, or representation about it. It is your responsibility to independently confirm its accuracy and completeness. Any projections, opinions, assumptions or estimates used are for example only and do not represent the current or future performance of the property. The value of this transaction to you depends on tax and other factors which should be evaluated by your tax, financial and legal advisors. You and your advisors should conduct a careful, independent investigation of the property to determine to your satisfaction the suitability of the property for your needs.

Sublease

8,800-15,000 SF



Cresa © 2019. All rights reserved. The information contained in this document has been obtained from sources believed reliable. While Cresa does not doubt its accuracy, Cresa has not verified it and makes no guarantee, warranty, or representation about it. It is your responsibility to independently confirm its accuracy and completeness. Any projections, opinions, assumptions or estimates used are for example only and do not represent the current or future performance of the property. The value of this transaction to you depends on tax and other factors which should be evaluated by your tax, financial and legal advisors. You and your advisors should conduct a careful, independent investigation of the property to determine to your satisfaction the suitability of the property for your needs.