

# Sublease

## Metroview I

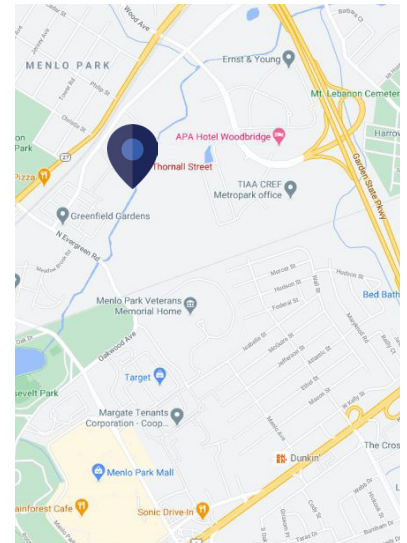
333 Thornall St  
Edison, New Jersey

### Space Profile:

<b>Premises</b>	Lobby Level
<b>RSF</b>	5,474 RSF
<b>Rental Rate</b>	Negotiable
<b>Availability</b>	Immediate
<b>Term</b>	Through 9.30.2025
<b>Building Class</b>	A
<b>Submarket</b>	North Edison / Woobridge
<b>Built</b>	Renovated 2018
<b>Parking</b>	3.50/1,000

### Features:

- Building amenities include food service, covered parking and on-site security
- MetroPark Train Station within walking distance
- Conveniently located off Exits 131A/B of the Garden State Parkway



### Contact:

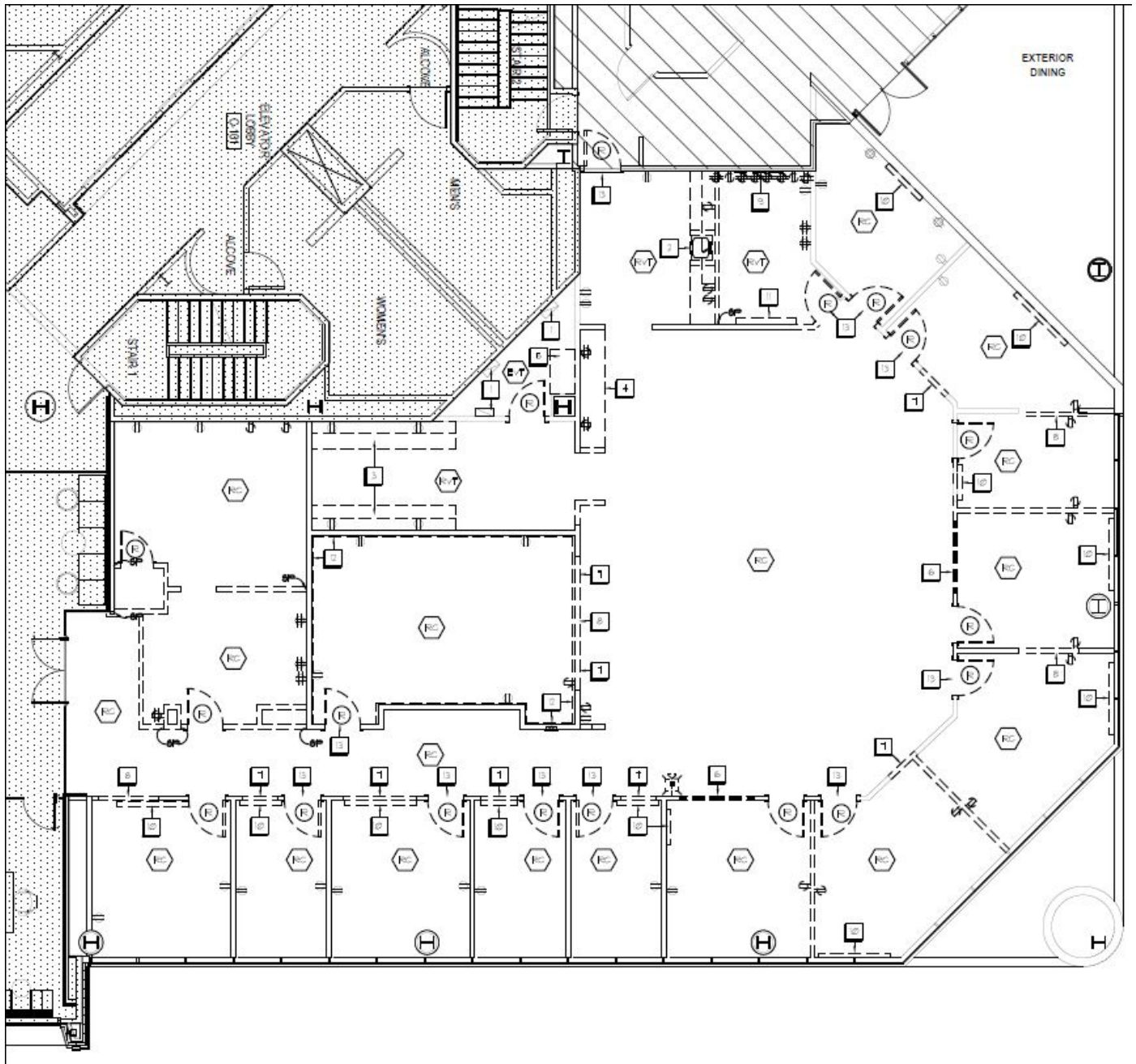


**James J. Scancarella**  
201.970.3659  
jscancarella@cresa.com



**Glenn DiGiacomo**  
201.931.5774  
gdigiaco@cresa.com

## 5,474 RSF - Lobby Level



**cresa**

Cresa © 2019. All rights reserved. The information contained in this document has been obtained from sources believed reliable. While Cresa does not doubt its accuracy, Cresa has not verified it and makes no guarantee, warranty, or representation about it. It is your responsibility to independently confirm its accuracy and completeness. Any projections, opinions, assumptions or estimates used are for example only and do not represent the current or future performance of the property. The value of this transaction to you depends on tax and other factors which should be evaluated by your tax, financial and legal advisors. You and your advisors should conduct a careful, independent investigation of the property to determine to your satisfaction the suitability of the property for your needs.